



March 2022



Regional Roundabout Screening Study



Southwestern Pennsylvania Commssion 2022

Officers:

Chairman: Leslie Osche
Vice Chairman: Pat Fabian

Secretary-Treasurer: Vincent Vicites
Executive Director: Vincent Valdes

Allegheny County:

Rich Fitzgerald
Lynn Heckman
Clifford B. Levine
Robert J. Macey
Jennifer Beer

Butler County:

Leslie Osche
Kim Geyer
Kevin Boozel
Mark Gordon
Richard Hadley

Indiana County:

Mike Keith
Robin Gorman
Sherene Hess
Byron Stauffer
Mark Hilliard

Westmoreland County:

Sean Kertes
Gina Cerilli Thrasher
Douglas Chew
Robert Regola III
Tom Ceraso

Armstrong County:

Don Myers
Pat Fabian
Jason Renshaw
Darin Alviano
Kelli Wingard

Fayette County:

Vince Vicites
Scott Dunn
Dave Lohr
Joe Grata
Fred Junko

Lawrence County:

Morgan Boyd
Loretta Spielvogel
Daniel J. Vogler
Brad Berlin
Amy McKinney

City of Pittsburgh:

Edward C. Gainey
Rev. Ricky Burgess
Scott Bricker
Aurora Sharrard
Mavis Rainey

Beaver County:

Tony Amadio
Jack Manning
Daniel Camp, III
Kelly Gray
Charles Jones

Greene County:

Mike Belding
Blair Zimmerman
Betsy McClure
Jeffery A. Marshall
Rich Cleveland

Washington County:

Diana Irey-Vaughan
Larry Maggi
Nick Sherman
John Timney
Robert Griffin

Pennsylvania Dept. of Transportation:

Larry S. Shifflet
Kevin McCullough
Brian Allen
Cheryl Moon-Sirianni
William Kovach

Governor's Appointee

Ali Doyle

Transit Operator

Sheila Gombita

U.S. Environmental Protection Agency

Laura Mohollen

PA Dept. of Community & Economic Development

Johnna Pro

Federal Transportation Administration

Theresa Garcia Crews

Federal Highway Administration

Alicia Nolan

Port Authority of Allegheny County

Katharine Kelleman
Ed Typanski

Federal Aviation Administration

Appointment pending

U.S. Economic Development Administration

Appointment pending

SPC Regional Roundabout Screening Study

Prepared For:

Southwestern Pennsylvania Commission
Two Chatham Center, Suite 500
112 Washington Place
Pittsburgh, PA 15219



Prepared By:

Urban Engineers, Inc.
1 Williamsburg Place, Suite 210
Warrendale, PA 15086

In association with:

Whitman, Requardt and Associates, LLP
2009 Mackenzie Way, Suite 240
Cranberry Township, PA 16066

The Markosky Engineering Group, Inc.
3689 Route 711
Ligonier, PA 15658

Special thanks to the members of the Steering Committee who guided the development of this study:

Southwestern Pennsylvania Commission

Domenic D'Andrea	Joshua Spano
Andy Waple	Ryan Gordon
Evan Schoss	Chuck Imbrogno

Pennsylvania Department of Transportation

District 10-0	District 12-0
David Tomaswick	Bryan Walker
Amanda Olbeter	Cory Craft

District 11-0

Jeff Thompson
Todd Kravits
Bill Lesterick

Central Office

Ryan Shiffler
Jeffrey Bucher

County Planning Partners

Allegheny County

Ann Ogoreuc
Meghan Sexton

Armstrong County

Darin Alviano

Beaver County

Joe West

Butler County

Joel MacKay

Fayette County

Arthur Cappella

Greene County

Jeremy Kelly

Indiana County

Josh Krug

Lawrence County

Amy McKinney

Washington County

Jason Theakston

Westmoreland County

Dan Carpenter

City of Pittsburgh

Nick Ross

Table of Contents

Acknowledgements	2
Southwestern Pennsylvania Commission 2022.....	2
SPC Regional Roundabout Screening Study	3
Study Background	5
Study Overview	6
1. Intersection Database/GIS Analysis	7
Highway Safety Network Screening.....	7
2. Roundabout Screening Step 1 (HSNS Screening)	8
Filters	8
Minimum Number of Angle and Head-on Crashes	8
Intersection AADT	9
90-10 Traffic Split.....	9
Individual Review	10
Highway Safety Manual (HSM) Analysis	11
3. Roundabout Screening Step 2 (Intersection Control Evaluation)	12
4. Concept Development/Report	15
Figure 1: SR 68 and SR 3007 (Meridian Road/Benbrook Road) & SR 68 and SR 3031 (Eberhart Road) .	16
Figure 2: SR 51 (Jordan Street) and SR 151 (Laurel Road)	18
Figure 3: SR 4012 (Union Avenue) and SR 4014 (Gass Road).....	19
Figure 4: SR 201 (Rostraver Road) and SR 3013 (Vance Dei Cas Highway).....	20
Figure 5: SR 66 (Freeport Road) and SR 366 (Greensburg Road)	21
Figure 6: SR 136 (Main Street) and SR 1055 (Brownlee Road).....	22
5. Conclusion	23
Table 1: SPC Roundabout Study – High Potential Roundabout Candidates	24
Appendix	25
Table 2: Potential Roundabout Locations in the SPC Region	25
District 10-0	25
District 11-0	27
City of Pittsburgh.....	32
District 12-0	34

Study Background



Cox's Corner, Butler County, PA

The **Southwestern Pennsylvania Commission's (SPC)** Regional Roundabout Screening Study will identify high potential roundabout candidate intersections which will advance SPC's Long-Range Transportation Plan (LRTP), entitled *SmartMoves for a Changing Region*. One of the goals outlined in the LRTP is to implement "major projects that maintain our existing system while also enhancing **safety, accessibility, mobility, and connectivity** across the region." Future potential projects from this study will achieve these goals and advance the Pennsylvania Department of Transportation's (PennDOT) Strategic Highway Transportation Safety Plan (SHSP) by improving intersection safety.

Modern roundabouts, which first appeared in the United States in the early 1990s, are becoming an increasingly popular form of intersection control because of their safety and mobility benefits. The Federal Highway Administration (FHWA) has identified modern roundabouts as a proven safety countermeasure. Roundabouts are somewhat underutilized within SPC's region. Of the 72 existing roundabouts in the Commonwealth, only 15 are within the SPC region.

The study team solicited input on potential roundabout candidates from the Steering Committee, which consists of representatives from PennDOT Engineering Districts 10, 11, and 12; and county planning partners from Allegheny, Armstrong, Beaver, Butler, Fayette, Greene, Indiana, Lawrence, Westmoreland, and Washington Counties; and the City of Pittsburgh.

This report documents the intersection screening process, including the screening criteria and methodology, and provides a list of potential roundabout locations.

Study Overview

Below is a summary of the study. Details on each step are provided in the sections that follow. The study team developed this website (<https://roundabout-urbanengineers.hub.arcgis.com/>) to solicit feedback from the Steering Committee. Given the number of potential intersections, the website allowed the Steering Committee to provide comments at their discretion. The website is based on SPC's ArcGIS Hub platform and allowed committee members to comment on potential locations, learn more about the study and roundabouts, and view the relationship to planned PennDOT projects. The website was updated throughout the program with layers to reflect current intersection rankings.

1. Intersection Database/GIS Analysis:

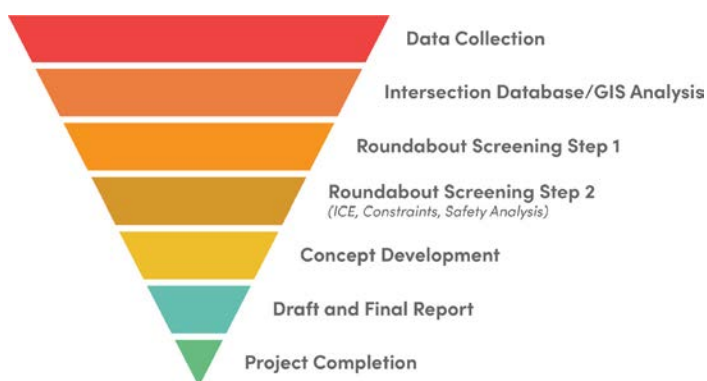
Summarized the crash data per intersection using ArcGIS Analysis Tools. The study team used PennDOT's Highway Safety Network Screening (HSNS) as its initial list of 1,379 intersections.

2. Roundabout Screening Step 1:

Developed a list of intersections based primarily on safety need (i.e., the number of angle and head-on crashes). The study team identified approximately 160 intersections and discussed them with the Steering Committee in September 2021. Approximately 40 intersections were selected for the next screening step.

3. Roundabout Screening Step 2:

Used PennDOT's Intersection Control Evaluation (ICE) Policy to confirm a roundabout is an appropriate safety countermeasure. The study team met with the Steering Committee in December 2021 to select six intersections for concept development.



4. Concept Development:

Consisted of horizontal concepts and reports for the top six candidates. Each report consists of the horizontal design, design criteria, traffic analysis, truck turning swept path analysis, fastest path diagrams, horizontal sight distance, and ICE analysis from Roundabout Screening Step 2.

5. Draft and Final Report (this report):

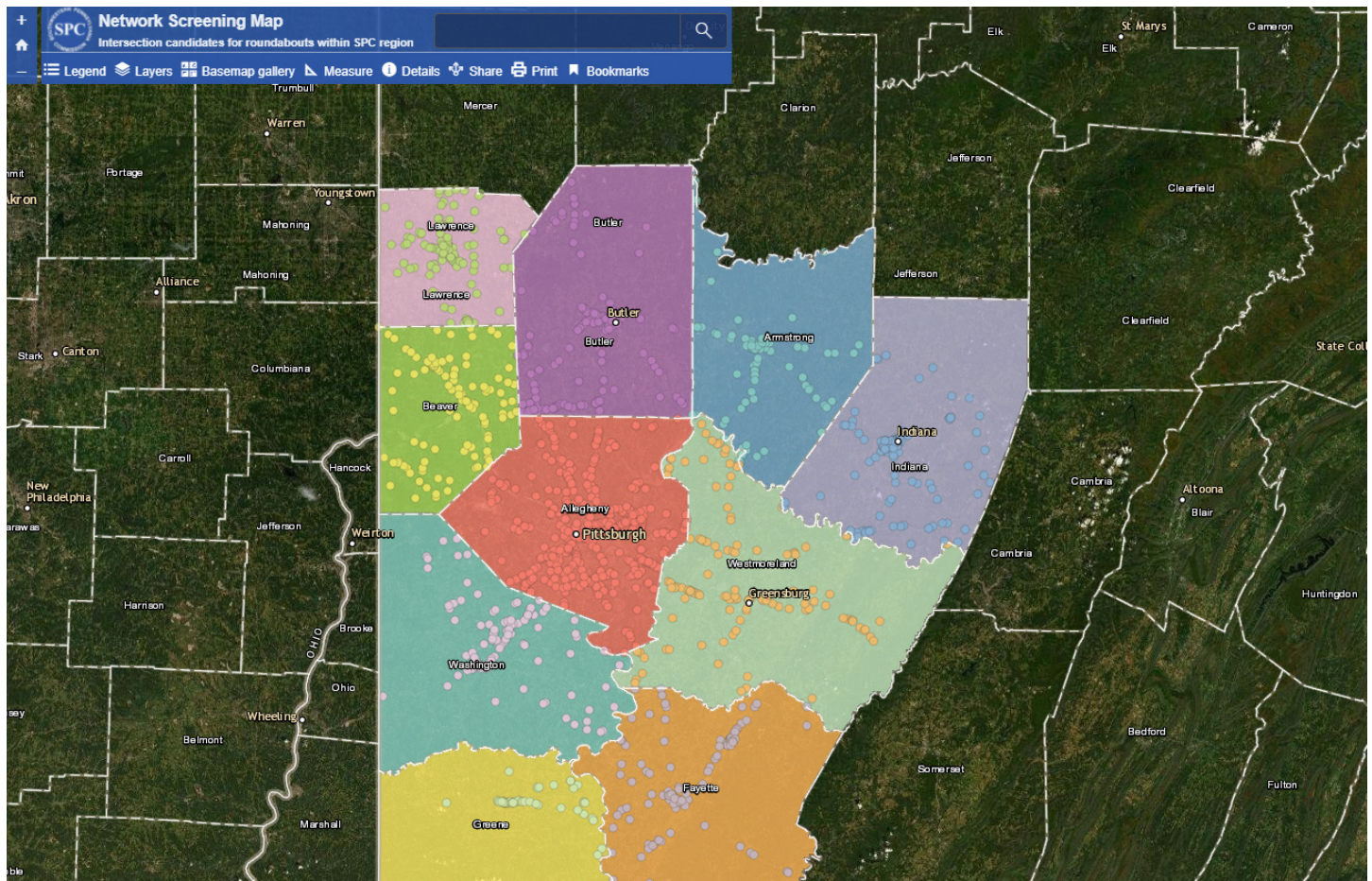
Summarizes the study process and results. The final report suggests potential sources of funding, including the Highway Safety Improvement Program (HSIP), the Multimodal Transportation Fund (MTF), and Congestion Mitigation and Air Quality (CMAQ) Funds.

1. Intersection Database/GIS Analysis

An intersection database was developed primarily using PennDOT's Highway Safety Network Screening (HSNS). Additional information and rankings were added to this list as the study progressed.

Highway Safety Network Screening

At the direction of SPC, the study team used PennDOT's 2021 HSNS urban and rural intersection Excel spreadsheets for the 10 counties in the SPC region. PennDOT's Bureau of Maintenance and Operations developed the HSNS, per the American Association of Highway State Transportation Officials' (AASHTO) Highway Safety Manual (HSM) guidelines, to identify high crash intersections and segments. The HSNS spreadsheets include, but are not limited to, municipal information, roadway identification, roadway annual average daily traffic (AADT), speed limit, HSM crash data (predicted, observed, and expected), and Google maps web link.



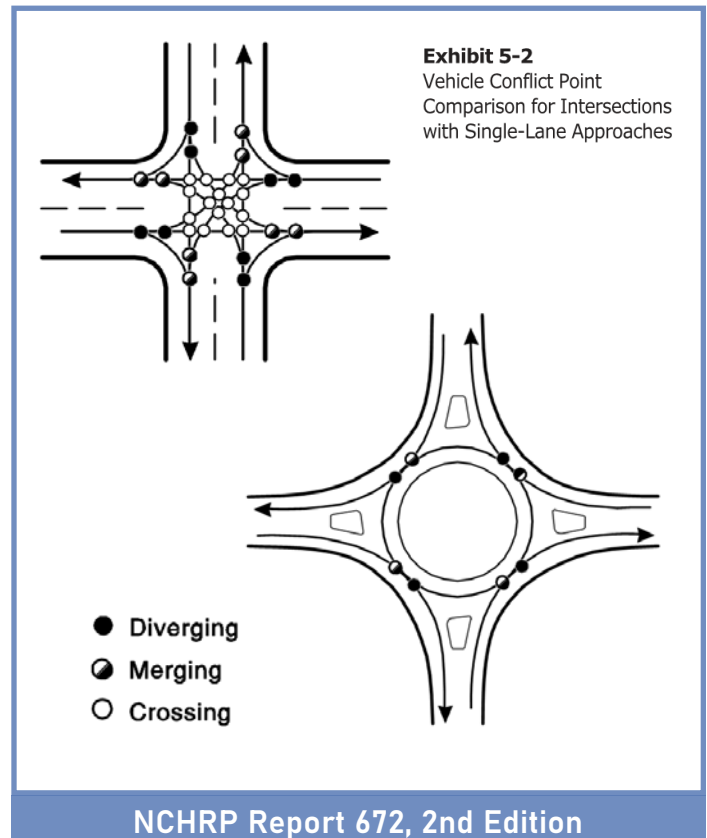
2. Roundabout Screening Step 1 (HSNS Screening)

The goal of the study is to select roundabouts that will have the greatest societal benefit. For this reason, the first screening focused on safety (i.e., reducing the number and severity of potential crashes). The initial screening list combined urban and rural intersections by county, ranked by total number of angle and head-on crashes. It focused on head-on crash areas, since they tend to be more severe. Modern roundabouts are a proven FHWA safety countermeasure and can reduce the number of fatal and injury crashes by 90 and 75 percent, respectively. Roundabouts achieve these safety results by slowing vehicles and eliminating crossing conflict points. Crossing conflict points are associated with angle and head-on crashes.

The study team evaluated counties individually for ease of Steering Committee review. There were 1,379 initial HSNS intersections for the 10-county region.

Filters

The study team applied filters to eliminate intersections without substantial safety issues. The filters were based upon intersection AADT, 90-10 traffic split, and minimum number of angle and head-on crash filters. Intersections were individually reviewed to identify physical features that would make a roundabout prohibitively expensive.

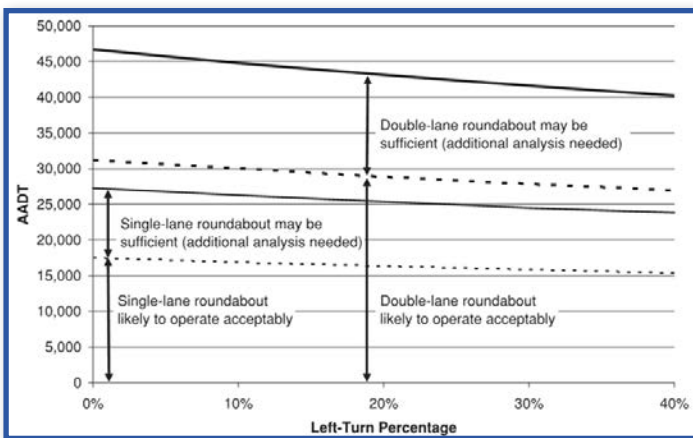


Minimum Number of Angle and Head-on Crashes

Intersections with less than four combined angle and head-on crashes were eliminated. To ensure rural counties were represented, the threshold for number of head-on crashes was lowered. Some rural counties did not have any intersections with more than 5 angle and head-on crashes and would have been eliminated otherwise.

Intersection AADT

Intersection annual average daily traffic (AADT) entering an intersection is the sum of bidirectional AADT for each approach divided by two. Per NCHRP Report 672, 2nd Edition, intersection AADT can be used at a planning level to identify the number of lanes needed to implement a roundabout. A single lane roundabout will be sufficient for most intersections with less than 20,000 vehicles per day (vpd). Roundabouts with greater than 20,000 vpd will likely require additional approach lanes. A vpd greater than 30,000 vpd will likely require a hybrid or double-lane roundabout configuration.



The study team used intersection AADT to identify if there was sufficient traffic to justify the improvement. Low volume intersections and driveways, where the minor AADT was less than 1,000 vpd, were eliminated. SPC and PennDOT did not want to progress candidates that may need more than two through lanes because they may not be received well by the travelling public at this time. The few intersections with AADT greater than 30,000, were evaluated individually rather than with a filter.

90-10 Traffic Split

SPC eliminated intersections where the major road AADT is greater than 90% of the total intersection AADT (90-10 traffic split) because a roundabout would not be expected on the major road and would cause unnecessary delay.

The study team found intersections with a 90-10 traffic split on the HSNS list tended to be rural intersections, which would be eliminated because of minor road AADT, or were on major arterials adjacent to higher crash locations also on the HSNS. The relation to higher volume locations suggested larger corridor access/speed control concerns. For these reasons, The study team concurred with SPC's recommendation and eliminated intersections with 90-10 splits or higher. The study team considered intersection split during individual review but did not automatically eliminate such intersections.



Individual Review

After applying the three filters noted above, the 1,379 initial HSNS intersections were reduced to 578. Each intersection was individually reviewed using Google maps to identify obvious opportunities or constraints which would make the implementation of a roundabout prohibitively expensive or complex. Opportunities include proximity to transit/trail/pedestrian connections and available right-of-way (ROW). Constraints include topography, adjacent intersection control/proximity, structures (e.g., buildings or bridges), railroads, major utilities, and environmental constraints (e.g., gas stations, streams, parks).

Each intersection was ranked as high potential, potential, and low potential. High potential intersections demonstrated a safety need (i.e., angle and head-on crashes) and appeared to have sufficient right-of-way to implement a roundabout. Potential intersections demonstrated a safety need, but one or

more factors would make it more difficult to implement. Low potential intersections either failed to demonstrate need, did not have sufficient ROW, or had a roadway network which was incompatible with a roundabout (e.g., one-way street intersection, grade separated intersections, etc.). All intersections eliminated by the filters were categorized as low potential.

160 high potential, **257** potential, and **161** low potential roundabout candidates were identified.

District (Meeting date)	County	# of HSNS intersections (1,379 total)	# of filtered intersections (578 total)	# of Highest Potential intersection (84 total)
10-0 (9/21/21)	Armstrong	86	13	4
	Butler	128	60	11
	Indiana	142	26	5
11-0 (9/16/21)	Allegheny	305	227	24
	Beaver	120	49	9
	Lawrence	134	33	5
12-0 (9/20/21)	Fayette	111	40	5
	Greene	51	13	3
	Washington	109	42	10
	Westmoreland	121	75	8

Individual Review (Continued)

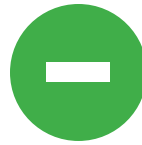
The screening methodology and filtered intersections were presented to the Steering Committee at three District-specific meetings. The study team presented the top ten intersections by county at the meetings for immediate feedback and gave access to these locations through the study website. The website included a “suggest a location” function, which allowed the Steering Committee to directly suggest locations. In total, the Steering Committee suggested 40 unique locations, 15 intersections were on the HSNS, and 4 were retained for the next screening.

Combining the feedback from the Steering Committee meeting and website comments, the study team identified 84 intersections for further analysis.

Highway Safety Manual (HSM) Analysis

To complete Roundabout Screening Step 1, the study team used PennDOT’s HSM Tool A and B spreadsheets to confirm a candidate intersection is underperforming and to identify the societal benefit of implementing a roundabout.

The HSM Tool A uses observed crashes to calculate the predicted and expected crashes. The difference between predicted and expected crashes is known as Potential for Safety Improvement (PSI) or excess crashes. Per PennDOT Publication 638A: Pennsylvania Safety Predictive Analysis Methods Manual:



A **negative** excess crash frequency is indicative of a site operating better than expected.



A **positive** excess crash frequency is indicative of a site operating worse than expected and is indicative of PSI.



A **High** excess crash frequencies are indicative of the greatest PSI.

While sites with negative excess crashes are performing better than expected, it is still possible to reduce crashes and have positive societal benefits at these locations. After presenting the HSM findings to the Steering Committee, the study team removed intersections with a PSI less than zero or with five or less angle/head-on crashes because the remaining intersections had a stronger need (i.e., more crashes, greater PSI).

The HSM Tool B uses the analysis from HSM Tool A and calculates the potential crash reduction and societal benefit from implementing countermeasures (e.g., a roundabout). The societal benefit of any proposed countermeasure must exceed the cost of implementation. After conferring with the Steering Committee, the study team recommended removing potential roundabouts with a societal benefit less than \$1.5 million, which is the lower range for single-lane modern roundabouts in Pennsylvania.

After completing the HSM analysis described above, 40 intersections were retained for Roundabout Screening Step 2.

3. Roundabout Screening Step 2

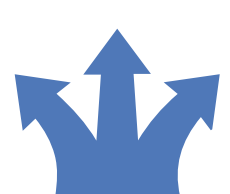
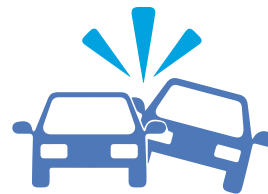
(Intersection Control Evaluation)

Intersections retained from Roundabout Screening Step 1 demonstrated a safety need, preliminary feasibility, and Steering Committee support for continued analysis. The purpose of Roundabout Screening Step 2 was to confirm a roundabout is the best intersection control type using PennDOT's Intersection Control Evaluation (ICE) Form.

PennDOT's ICE Form is a three-stage framework to filter out non-applicable or less effective control strategies. Not all stages need to be completed for each intersection and the process terminates when an intersection control is identified. Below is a summary of the ICE framework and how the study team evaluated each Stage:

Stage 1: Screening

1	2	3	4	5
Project Purpose and Goals <p>Study's primary goal of enhancing safety, mobility, accessibility, and connectivity in the region.</p>	Project Setting <p>Used Google maps and OpenStreetMap to identify existing land uses, bicycle/pedestrian accommodations, transit stops/routes, and existing traffic control.</p>	Traffic Volumes/Patterns <p>Used AADT volumes and splits from Stage 1 to confirm applicability of intersection control and completed traffic signal warrants as applicable.</p>	Crash History <p>Gathered crash resumes and summaries per Pennsylvania Crash Information Tool (PCIT). This information was later used for the HSM Analysis.</p>	Screening Evaluation <p>Includes 11 default alternatives. Given the traffic volumes and splits, alternatives were mostly limited to stop-controlled, signalized, or roundabout.</p>



Stage 2: Initial Control Strategy Assessment

Intersections which progressed beyond Stage 1 were analyzed in the following order to determine a preferred alternative.

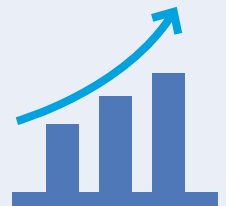
1 Safety Performance

The HSM Analysis was updated to include other alternatives. Urban compared the 20-year societal benefit included within the HSM Tool B. A comparison of Crash Reduction Factors (CRFs) from FHWA's CMF Clearinghouse was also a good indicator of improved safety improvement. For example, Continuous Green Tee intersections were often dismissed because the CRF (4.2%) is much lower than a roundabout conversion (48% crash reduction). Additionally, stop signs were considered but were frequently dismissed because of traffic volumes and/or because of the shorter life cycle of the intersection control.



2 Operational Analysis

If Stage 2 was continued, Urban collected peak hour Turning Movement Counts (TMCs) using StreetLight data, which is an anonymized big data aggregator. TMCs were then analyzed using Synchro 10 for signal and Sidra Intersection 9 for roundabout analysis. Volume-to-capacity ratios, Levels-of-Service (LOS), and queue lengths were considered as part of Stage 2.



3 Environmental, Utility, and Right-of-Way Impacts

Intersections that progressed to this step of the study had previously been designated high potential because of a lack of complicating factors for a roundabout. Environmental, utility, and ROW impacts were evaluated for forms of intersection control considered.



4 Alternative Costs

Roundabout and signal alternatives were assumed to have comparable construction costs and were not factored into the intersection control selection.



Stage 3: Detailed Control Strategy Assessment

Additional Analysis – Any intersections that progressed to Stage 3 were eliminated because a roundabout was not the clear choice for intersection control.

Roundabout Screening Step 2 Results

Of the 40 ICE analyses completed, 32 were recommended as roundabouts, 4 were recommended as traffic signal improvements, 1 was recommended as a median u-turn (MUT), 1 was recommended as an all-way stop, 1 was recommended as a geometric realignment, and 1 was eliminated. After the results were presented to the Steering Committee, seven recommended intersections were selected for concept development based on demonstrated safety need (i.e., higher angle/head-on crashes and PSI), enhancing accessibility, mobility, and connectivity, Steering Committee interest, and PennDOT District distribution. Below are the seven intersections progressed. Two intersections are grouped together because they are less than one mile apart.

Figure 1. SR 68 and SR 3007 (Meridian Road/Benbrook Road) & SR 68 and SR 3031 (Eberhart Road)

Butler Township, Butler County – PennDOT District 10-0

Figure 2. SR 51 (Jordan Street) and SR 151 (Laurel Road)

South Heights Borough, Beaver County – PennDOT District 11-0

Figure 3. SR 4012 (Union Avenue) and SR 4014 (Gass Road)

Ross Township, Allegheny County – PennDOT District 11-0

Figure 4. SR 201 (Rostraver Road) and SR 3013 (Vance Dei Cas Highway)

Rostraver Township, Westmoreland County – PennDOT District 12-0

Figure 5. SR 66 (Freeport Road) and SR 366 (Greensburg Road)

Washington Township, Westmoreland County – PennDOT District 12-0

Figure 6. SR 136 (Main Street) and SR 1055 (Brownlee Road)

Somerset Township, Washington County – PennDOT District 12-0

4. Concept Development/Report

Six concept reports were created for the intersections listed above. Each report summarizes the analysis previously performed, investigates the intersection further, and provides a horizontal design that could be used for future project development and funding. Each report includes the following:

1. **Concept Report** – Summarizes previous efforts, intersection selection, and the safety benefit-cost ratio.
2. **Crash Information** – Crash resumes and summary from the Pennsylvania Crash Information Tool (PCIT) described in Roundabout Screening Step 2.
3. **Traffic Analysis** – StreetLight data turning movement counts and HCM6 AM/PM peak hour results from the Intersection Control Evaluation (ICE).
4. **Desktop Environmental Screening** – Available federal, state, and local maps, databases, and records to identify environmental resources within the project area.
5. **Roundabout Concept** – Horizontal design and roundabout performance checks from NCHRP Report 672, 2nd Edition Section 6.7 including truck turning swept paths, fastest path diagrams/calculations, and stopping/intersection sight distance diagrams/calculations. The design vehicle is assumed to be a WB-62 modified (53' trailer), the largest unpermitted tractor trailer configuration in PA, unless otherwise noted. The roundabout concepts are shown in Figure 1 through 6.
6. **Cost Estimate** – Preliminary quantities were calculated using the roundabout concept and unit costs were gathered using PennDOT's ECMS Item Price History Portal for the applicable Districts. Contingencies for created for maintenance and protection of traffic (MPT), erosion and sediment control (E&S), drainage, highway lighting, right-of-way (ROW), utilities, escalation, and mobilization using comparable roundabout plans, specifications, and estimates (PS&E) packages. A 30% contingency and C-ENG were also included per PennDOT publication 352.
7. **HSM Analysis and ICE Form** – PennDOT's HSM Tool A and B results, ICE Stage forms, and signal warrant spreadsheets (as applicable).

Figure 1: SR 68 and SR 3007 (Meridian Road/Benbrook Road) & SR 68 and SR 3031 (Eberhart Road)

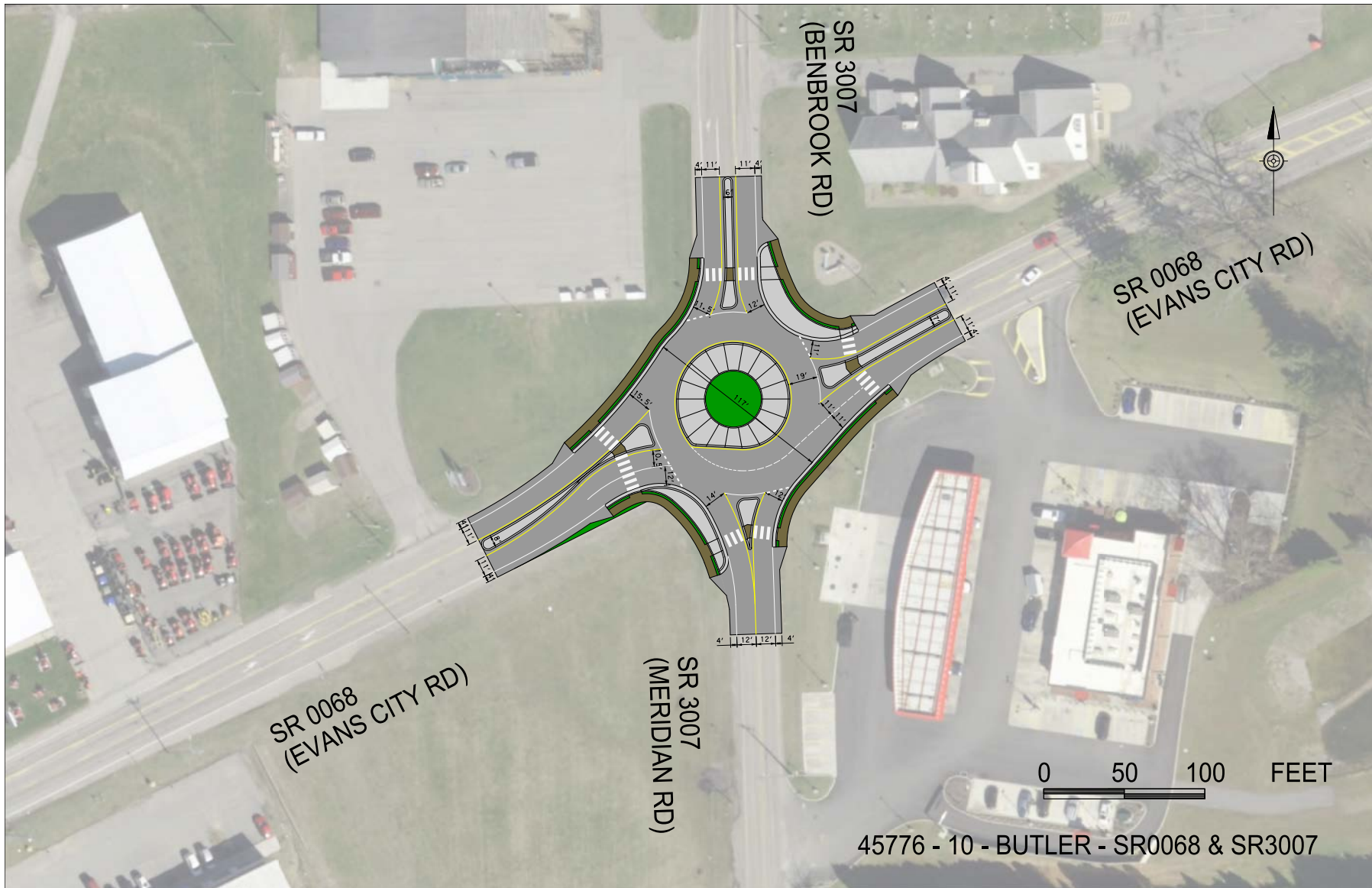


Figure 1: SR 68 and SR 3007 (Meridian Road/Benbrook Road) & SR 68 and SR 3031 (Eberhart Road)

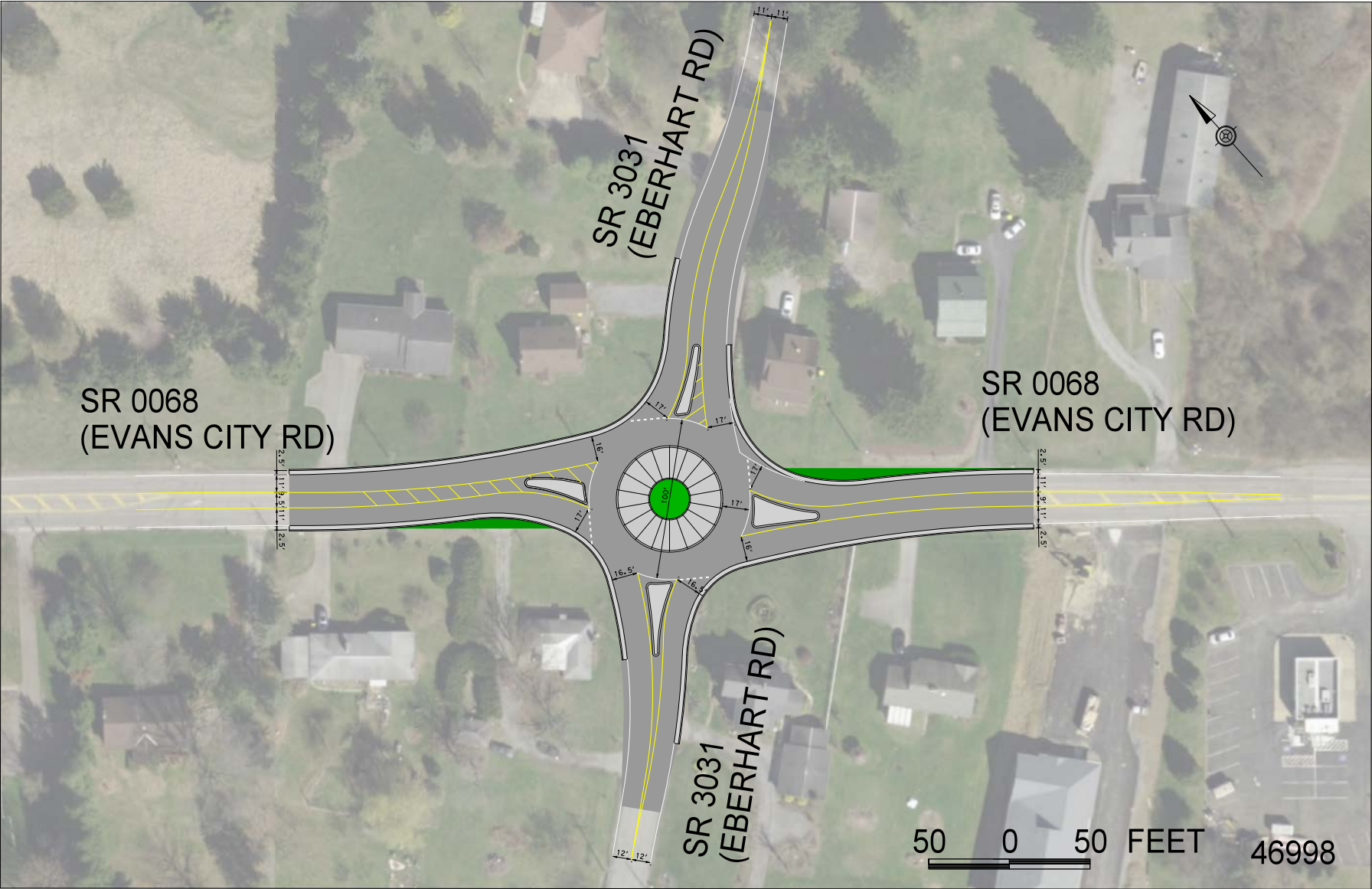


Figure 2: SR 51 (Jordan Street) and SR 151 (Laurel Road)

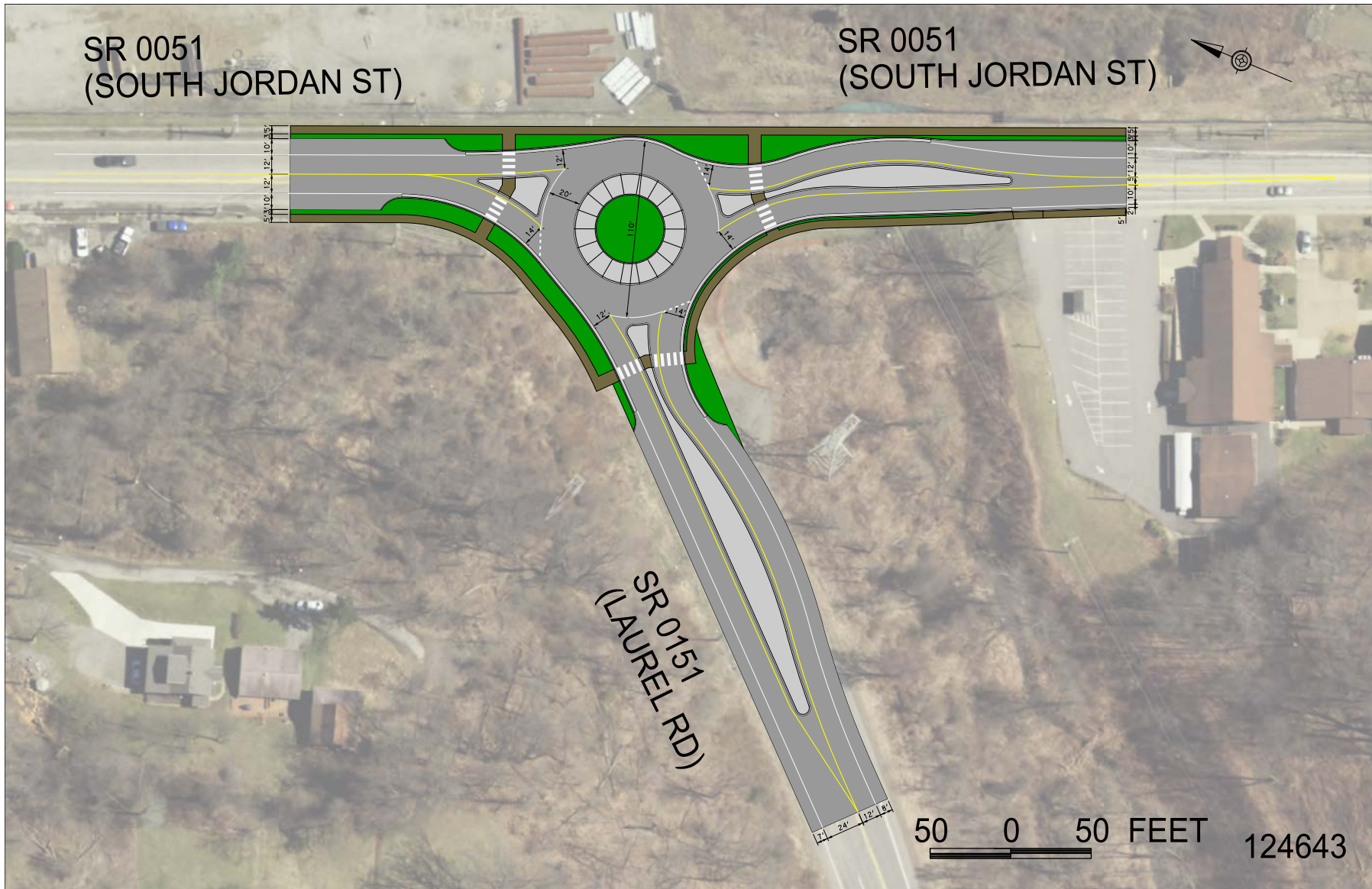


Figure 3: SR 4012 (Union Avenue) and SR 4014 (Gass Road)



Figure 4: SR 201 (Rostraver Road) and SR 3013 (Vance Dei Cas Highway)

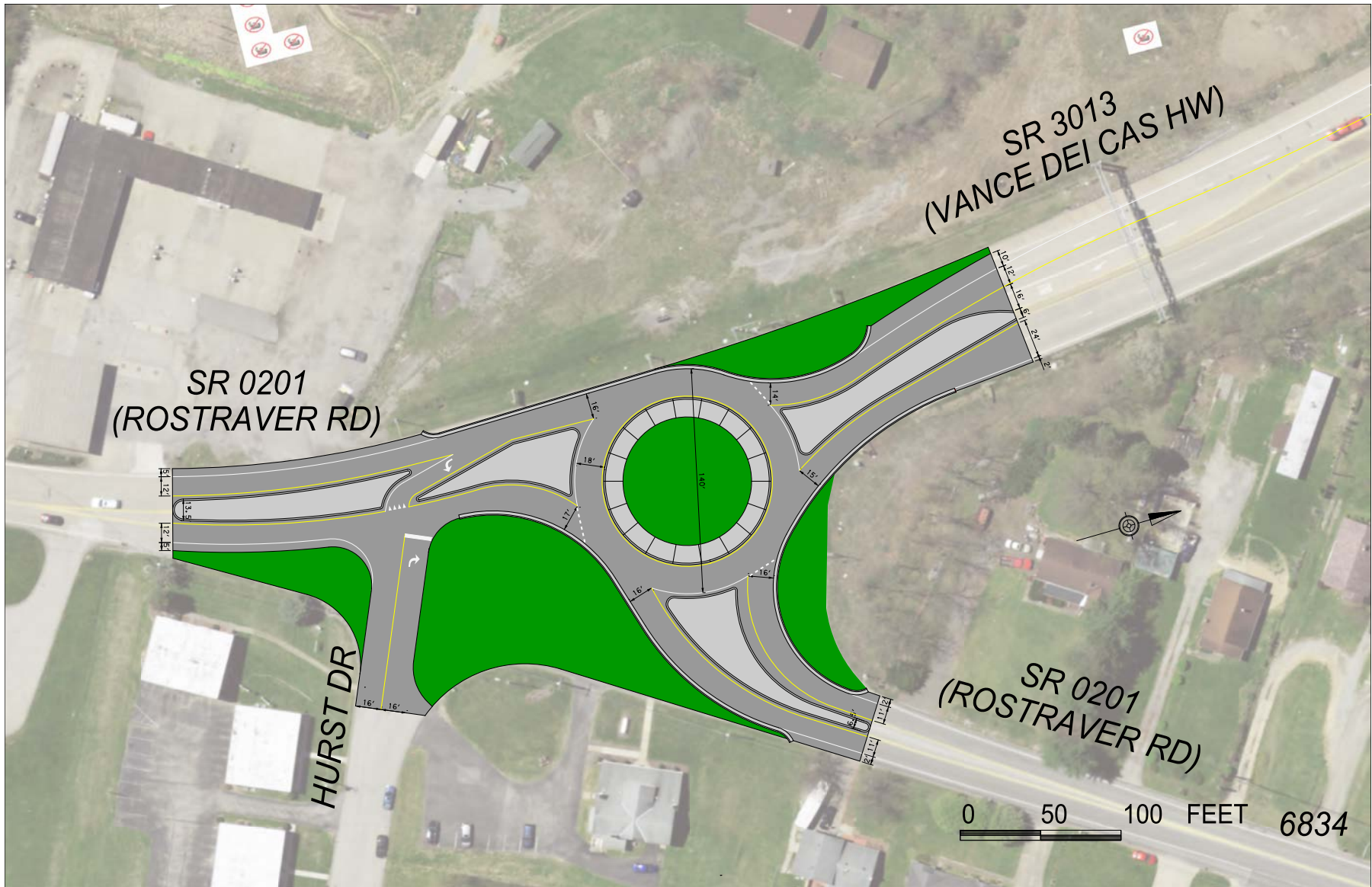
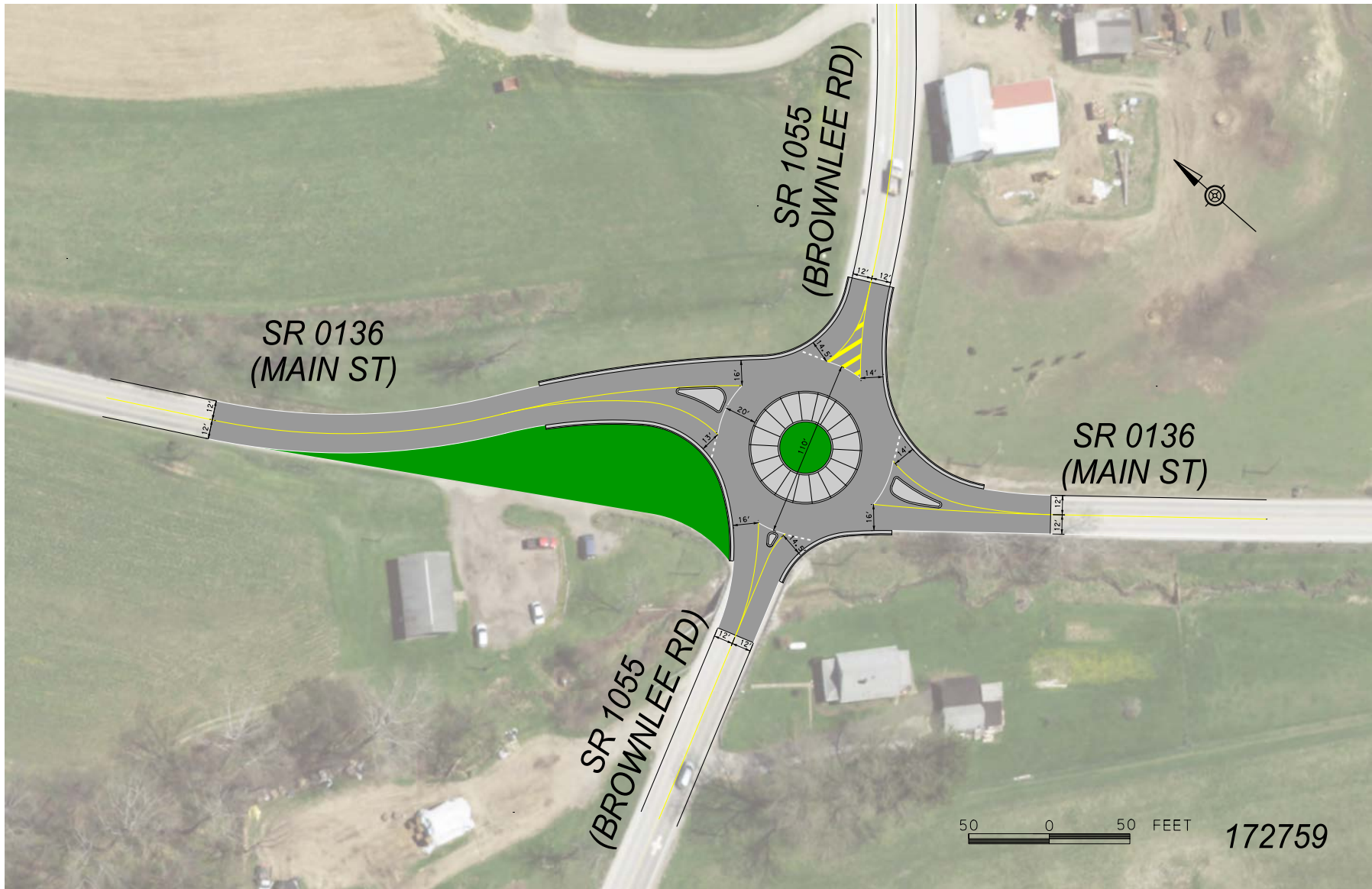


Figure 5: SR 66 (Freeport Road) and SR 366 (Greensburg Road)



Figure 6: SR 136 (Main Street) and SR 1055 (Brownlee Road)



5. Conclusion

The concepts developed represent a fraction of the high potential intersections within the SPC region. The study has identified 40 high potential intersections (**Table 1**) and developed seven concepts where a roundabout will enhance the safety, accessibility, mobility, and connectivity of the SPC region. We recommend all seven intersections be considered for incorporation into PennDOT's four- and twelve-year plans (TIP/TYP). The identified intersections meet the requirements for PennDOT's Highway Safety Improvement Program (HSIP) funds, which are:

1. Address a Strategic Highway Safety (SHSP) priority

Pennsylvania's 2022 Strategic Highway Safety Plan calls for more roundabouts to be considered to increase intersection safety.

2. Be identified through a data-driven process

This study is a data-driven process combining the most recent GIS information, input from Steering Committee partners, and PennDOT's HSNS list, Intersection Control Evaluation (ICE), and HSM tools. Intersections selected have been thoroughly vetted with SPC, PennDOT, and county planning partners. The Steering Committee worked collaboratively with multiple meetings and study website to facilitate feedback (<https://roundabout-urbanengineers.hub.arcgis.com/>).

3. Contribute to reduction in fatalities and serious injuries

Roundabouts are a proven FHWA countermeasure. Roundabouts implemented in Pennsylvania have a proven record of reducing the number and severity of crashes and a nearly 100% reduction in fatalities.

Table 2 includes the full list of intersections and their potential, based on criteria established with the Steering Committee. Agencies and municipalities are encouraged to consult the list when considering intersection changes.

While primarily HSIP oriented, these intersections may be eligible for Congestion Management and Air Quality (CMAQ) or Livability through Smart Transportation (SMART) funds as well. If implemented, these roundabouts will reduce the number and severity of potential crashes and continue SPC's sustained reduction in fatal and serious injuries throughout the region and advance SPC's Long-Range Transportation Plan (LRTP), *SmartMoves for a Changing Region*.

Table 1: SPC Roundabout Study – High Potential Roundabout Candidates

The intersections shown were identified by the initial screening of the SPC Regional Roundabout Study. The roundabout potential refers to a minimum threshold for existing crashes and ease of implementation given apparent intersection constraints (ROW, utilities, permitting). Each intersection requires further investigation for a final determination.

District	County	Municipality	Major Road Name	Major Designation	Minor Road Name	Minor Designation	Lat	Long
10	Butler	Butler Twp	Route 0068	SR 0068	Eberhart Rd	SR 3031 / T-316	40.86652986	-79.95437102
10	Butler	Butler Twp	Route 0068	SR 0068	Meridian Rd / Benbrook Rd	SR 3007	40.86224560	-79.96765894
10	Butler	Jackson Twp	Perry Hwy	SR 0019	Little Creek Rd	SR 3025	40.81152806	-80.12649526
10	Indiana	Burrell Twp	SR 0119 Hwy / Old Wm Penn Hwy	SR 0119 / SR 2002	Pine Ridge Rd / Park and Ride Rd	SR 2002	40.44365926	-79.22007757
11	Allegheny	Elizabeth Twp	Douglass Run Rd	SR 2017	Round Hill Rd	Local Rd	40.23835800	-79.81715300
11	Allegheny	Fawn Twp	Bakerstown Rd	SR 1028	Bull Creek Rd / Thompson Rd	SR 1034 / T-721	40.65003281	-79.79902321
11	Allegheny	McCandless Twp	Duncan Ave/Ferguson Rd	SR 4024	Thompson Run Rd	Local Rd	40.56601600	-79.99889600
11	Allegheny	Moon Twp	Beaver Grade Rd	SR 3077	Thorn Run Rd / Thorn Run Rd Exit	SR 3087 / T-388	40.50546246	-80.20755352
11	Allegheny	Moon Twp	University Blvd	SR 3109	Campus Dr / Private Dwy	Local Rd / Private Dwy	40.51957501	-80.21790119
11	Allegheny	North Fayette Twp	Main Street	H308/SR 3070	Allgheny Rd/Enlow Rd/Cliff Mine Rd	H389/Local Rd/H308	40.45472200	-80.23363900
11	Allegheny	North Versailles Twp	McKeesport Blvd	SR 2037	Navy Marine Corp Way	SR 2068 / Local Rd	40.38313975	-79.82764932
11	Allegheny	Penn Hills Twp	Allegheny River Blvd	SR 0130 / SR 2073	Sandy Creek Rd	SR 0130	40.48517879	-79.85687953
11	Allegheny	Pittsburgh City	Perrysville Ave	SR 0019	Ivory Ave	Local Rd	40.49826383	-80.02026846
11	Allegheny	Pittsburgh City	Mifflin Rd	SR 0885	Glass Run Rd	SR 3098	40.38992877	-79.93335496
11	Allegheny	Pittsburgh City	Marshall Ave	SR 0019	Brighton Rd	Local Rd	40.46688971	-80.02502265
11	Allegheny	Ross Twp	Union Ave / Gass Rd	SR 4012 / SR 4014	Highland Ave	SR 4012	40.52186760	-80.04820793
11	Allegheny	Ross Twp	Rochester Rd	SR 4011	Lowries Run Rd	SR 4021	40.53425300	-80.05177100
11	Allegheny	West Mifflin Boro	Buttermilk Hollow Rd	SR 2045	Thompson Run Rd	SR 2052	40.36047955	-79.90769098
11	Beaver	Beaver Falls City	4th Ave	SR 0018	Wallace Run Rd / Glads St	SR 0551	40.78807116	-80.33276707
11	Beaver	New Sewickley Twp	Sunflower Rd	SR 0068	Glen Eden Rd / Brush Creek Rd	SR 0989 / SR 1019	40.74834217	-80.20136361
11	Beaver	Raccoon Twp	Frankfort Rd	SR 0018	Green Garden Rd / Shippingport Hill Rd	SR 3016	40.61363375	-80.39955813
11	Beaver	South Heights Boro	S Jordan St	SR 0051	Laurel Rd	SR 0151	40.57035937	-80.23369396
12	Fayette	Dunbar Twp	Vanderbilt Rd	SR 0201	Ridge Blvd	Local Road	40.02253309	-79.61880973
12	Washington	Cecil Twp	Southpoint Blvd / Old Morganza Rd	SR 1032 / T-855	Morganza Rd	SR 1009	40.29572291	-80.15851798
12	Washington	Cecil Twp	Route 0980	SR 0980	Chartiers Run Rd / Ohare Rd	SR 1007 / T-662	40.28355882	-80.20973391
12	Washington	Donegal Twp	National Pk	SR 0040	Liberty Rd	SR 3005	40.10939294	-80.50881372
12	Washington	North Bethlehem Twp	National Pk	SR 0040	Chartiers Creek Rd / Brush Run Rd	SR 0519 / SR 2005	40.12562984	-80.13687154
12	Washington	North Strabane Twp	Morganza Rd	SR 1009	McClelland Rd	SR 1023	40.26412848	-80.17097585
12	Washington	Somerset Twp	Brownlee Rd	SR 1055	Main St	SR 0136	40.18117281	-80.09838133
12	Washington	South Strabane Twp	Beau St	SR 0136	Lakeview Dr / Trinity Pt	SR 1014 / Local Road	40.18040881	-80.22257592
12	Westmoreland	Allegheny Twp	Leechburg Rd	SR 0056	Serpentine Rd	SR 0356	40.61605727	-79.62683832
12	Westmoreland	Derry Twp	4th Ave	SR 0217	Industrial Blvd	SR 1020	40.31621995	-79.32799901
12	Westmoreland	Rostraver Twp	Rostraver Rd	SR 0201	Vance Dei Cas Hw	SR 3013	40.14298689	-79.84138690
12	Westmoreland	Southwest Greensburg Boro	Main St	SR 0119	To US 30 E / Private Dr	SR 8009 / Local Road	40.28541972	-79.54797259
12	Westmoreland	Washington Twp	Freeport Rd	SR 0066	Greensburg Rd / Fox Rd	SR 0366 / T-977	40.48936379	-79.59847150

Note: Intersections shown are the culmination of a data driven and collaborative process with the Steering Committee but do not represent all high potential intersections.

Table 2: Potential Roundabout Locations in the SPC Region

District 10-0

The intersections shown were identified by the initial screening of the SPC Regional Roundabout Study. The roundabout potential refers to a minimum threshold for existing crashes and ease of implementation given apparent intersection constraints (ROW, utilities, permitting). Each intersection requires further investigation for a final determination.

District	County	Municipality	Major Road Name	Major Designation	Minor Road Name	Minor Designation	Lat	Long	Roundabout Potential
10	Armstrong	Apollo Boro	1st St	SR 0056 / SR 0066	Kiski Ave / Astronaut Way	SR 2048 / SR 0056	40.581165180	-79.567286920	High Potential
10	Armstrong	Gilpin Twp	Sr 0066 Sh	SR 0066	Schenley Rd	SR 2062	40.656000930	-79.608084760	High Potential
10	Armstrong	Kittanning Boro	Market St	SR 1038	Grant Av	Local Road	40.815525180	-79.517469620	High Potential
10	Armstrong	Kittanning Boro	Water St	SR 1040 / Local Rd	Butler Rd / Market St	SR 1038	40.813490680	-79.520952540	High Potential
10	Armstrong	Manor Twp	Main St	SR 0066	5th Ave / Fort Run Rd	SR 0128 / T-447	40.779693880	-79.521333070	High Potential
10	Armstrong	Rayburn Twp	SR 0028 Hwy	SR 0028	Clearfield Pk / SR 0085 Hwy	SR 1038 / SR 0085	40.818119010	-79.489731710	High Potential
10	Armstrong	Freeport Boro	Second St	SR 0128	High St	Local Road	40.672947750	-79.689532930	Potential
10	Armstrong	Kittanning Boro	Water St	SR 1040	Walnut St	Local Road	40.809508950	-79.516923170	Potential
10	Armstrong	Manor Twp	Indiana Rd	SR 1422	Buffington Dr	Local Road	40.808985170	-79.498353160	Potential
10	Armstrong	Rural Valley Boro	SR 0085 Hwy	SR 0085	Water St	SR 2001 / Local Rd	40.797578970	-79.315252510	Potential
10	Armstrong	West Franklin Twp	Benjamin Franklin Hw	SR 0422	Mushroom Farm Rd	SR 3013	40.849182420	-79.680452960	Potential
10	Armstrong	Worthington Boro	Benjamin Franklin Hw	SR 0422	Bear Rd	SR 3011	40.836151270	-79.632606690	Potential
10	Butler	Adams Twp	Mars Crider Rd	SR 0228	Three Degree Rd	SR 3007	40.693497070	-79.977086880	High Potential
10	Butler	Butler City	New Castle Rd	SR 0068	Hansen Ave	SR 3001	40.862838960	-79.910823290	High Potential
10	Butler	Butler City	Hansen Ave	SR 3001	Whitestown Rd / Armco Dr	SR 3002 / Local Rd	40.850712450	-79.912188790	High Potential
10	Butler	Butler Twp	Route 0068	SR 0068	Eberhart Rd	SR 3031 / T-316	40.866529860	-79.954371020	High Potential
10	Butler	Butler Twp	Route 0068	SR 0068	Meridian Rd / Benbrook Rd	SR 3007	40.862245600	-79.967658940	High Potential
10	Butler	Butler Twp	Route 0068	SR 0068	SR 0356 Hwy	SR 0356	40.868603140	-79.924831740	High Potential
10	Butler	Butler Twp	SR 0356 Hwy / Private Dwy	SR 0356 / Private Dwy	New Castle Rd / SR 3036 Hwy	SR 0356 / SR 3036	40.878411300	-79.951892590	High Potential
10	Butler	Jackson Twp	Perry Hwy	SR 0019	Little Creek Rd	SR 3025	40.811528060	-80.126495260	High Potential
10	Butler	Jefferson Twp	N Pike Rd	SR 0356	Neupert Rd / Marwood Rd	T-846 / T-850	40.770128850	-79.790372290	High Potential
10	Butler	Jefferson Twp	North Pike Rd	SR 0356	Bonniebrook Rd / Old Pike Ln	Local Road	40.783784100	-79.798781030	High Potential
10	Butler	Portersville Boro	Perry Hwy	SR 0019	E Portersville Rd	SR 0488	40.923021740	-80.142521630	High Potential
10	Butler	Slippery Rock Twp	Branchton Rd	SR 4010	Harmony Rd	T-377	41.070634270	-80.035118100	High Potential
10	Butler	Winfield Twp	N Pike Rd	SR 0356	Winfield Rd	SR 2010	40.760069640	-79.778833110	High Potential
10	Butler	Adams Twp	Mars Crider Rd	SR 0228	Warrendale Rd / Pittsburgh St	SR 3019	40.691324000	-80.018217000	Low Potential
10	Butler	Adams Twp	Mars Crider Rd	SR 0228	Heritage Creek Dr	SR 3017 / Local Road	40.696425190	-80.039587770	Low Potential
10	Butler	Brady Twp	William Flynn Hwy	SR 0008	Staff Rd / Hall Rd	T-449 / T-840	40.994418980	-79.984840920	Low Potential
10	Butler	Butler City	Jefferson St	SR 0068	Kittanning St / Monroe St	SR 2004 / Local Rd	40.860932720	-79.888601900	Low Potential
10	Butler	Butler City	Jefferson St	SR 0068	Franklin St	Local Road	40.860982880	-79.891501270	Low Potential
10	Butler	Butler City	Wayne St	SR 0356 / Local Rd	Main St	SR 0008	40.857062570	-79.895333340	Low Potential
10	Butler	Butler Twp	Pittsburgh Rd	SR 0008	McCalmont Rd / Vogel Rd	SR 3004	40.816390960	-79.927485340	Low Potential
10	Butler	Butler Twp	Whitestown Rd	SR 3002	Eberhart Rd	T-316	40.858894820	-79.953930560	Low Potential
10	Butler	Connoquenessing Twp	SR 0068 Hwy	SR 0068	Kriess Rd / Eagle Mill Rd	T-354 / T-554	40.853678520	-79.981034840	Low Potential
10	Butler	Cranberry Twp	Perry Hwy	SR 0019	Short St / Walmart Ent	T- 930 / Private Dwy	40.687589560	-80.101941480	Low Potential
10	Butler	Cranberry Twp	Perry Hwy	SR 0019	Mars Crider Rd / Freedom Rd	SR 0228 / SR 3020	40.684860760	-80.101295470	Low Potential
10	Butler	Cranberry Twp	Perry Hwy	SR 0019	Cranberry Sq Dr / Hartners Dr	T-668 / T-970	40.689968960	-80.102744120	Low Potential
10	Butler	Cranberry Twp	Perry Hwy	SR 0019	Mall Entrance Rd / St Francis Way	T-346 / Private Dwy	40.682004380	-80.100513300	Low Potential
10	Butler	Cranberry Twp	Perry Hwy	SR 0019	Glen Eden Rd / N Boundary Rd	SR 3024/T-311	40.722561680	-80.106142940	Low Potential
10	Butler	Cranberry Twp	Mars Crider Rd	SR 0228	Cranberry Woods Dr / Cranberry Springs Dr	Local Rd	40.685486420	-80.087724760	Low Potential
10	Butler	Cranberry Twp	Mars Crider Rd	SR 0228	Franklin Rd	SR 3021	40.685372160	-80.074962260	Low Potential
10	Butler	Seven Fields Boro	Mars Crider Rd	SR 0228	Adams Ridge Blvd	Local Rd	40.689187650	-80.054597560	Low Potential

10	Butler	Slippery Rock Boro	New Castle St / Franklin St	SR 0108	Main St	SR 0173 / SR 0258	41.064078090	-80.056476200	Low Potential
10	Butler	Zelienople Boro	Beaver St	SR 0068	Clay St	Local Road	40.792404880	-80.137731450	Low Potential
10	Butler	Adams Twp	Mars Crider Rd	SR 0228	Mars Valencia Rd	SR 3015	40.690038150	-80.006613000	Potential
10	Butler	Butler Twp	N Main St Ext	SR 0008	Evans Rd	Local Rd	40.883003070	-79.899235700	Potential
10	Butler	Butler Twp	Pittsburgh Rd	SR 0008	Litman Rd	Local Rd	40.842458330	-79.919017840	Potential
10	Butler	Butler Twp	Jefferson St	SR 0068	Delwood Rd	T-795	40.868609300	-79.878146600	Potential
10	Butler	Butler Twp	Route 0068	SR 0068	Duffy Rd	T-322	40.867822690	-79.939991470	Potential
10	Butler	Butler Twp	New Castle Rd	SR 0356	Alameda Park Rd	T-340	40.870583180	-79.931622830	Potential
10	Butler	Butler Twp	New Castle Rd	SR 0356	Hospital Rd / Butler Commons	Local Road	40.874885550	-79.944015840	Potential
10	Butler	Butler Twp	Benjamin Franklin Hwy	SR 0422	Heinz Rd / Greenwood Dr	T-339	40.885642470	-79.971324000	Potential
10	Butler	Butler Twp	Whitestown Rd	SR 3002	Duffy Rd	T-322	40.859396560	-79.939469690	Potential
10	Butler	Butler Twp	Benbrook Rd	SR 3007	Greenwood Dr	T-339	40.879325410	-79.968274840	Potential
10	Butler	Center Twp	N Main St Ext	SR 0008	Mercer Rd	T-494	40.909643070	-79.929303990	Potential
10	Butler	Center Twp	N Main St Ext	SR 0008	Clearview Cir	Local Road	40.896362970	-79.907612550	Potential
10	Butler	Connoquenessing Twp	SR 0068 Hwy	SR 0068	Whitestown Rd	SR 3002 / T-431	40.859584910	-79.972244270	Potential
10	Butler	Cranberry Twp	Perry Hwy	SR 0019	Ogle View Rd/Rowan Rd	SR 3018 / T-322	40.703926990	-80.104285030	Potential
10	Butler	Cranberry Twp	Perry Hwy	SR 0019	Ehrman Rd / Private Dwy	T-969 / Private Dwy	40.734515110	-80.109731330	Potential
10	Butler	Cranberry Twp	Perry Hwy	SR 0019	Rochester Rd / Wisconsin Ave	SR 3022 / T-768	40.699037590	-80.104420210	Potential
10	Butler	Cranberry Twp	Freedom Rd	SR 3020	Powell Rd	T-301	40.681439490	-80.139968190	Potential
10	Butler	Cranberry Twp	Norman Dr / Thomson Park Dr	T-830 / T-970	Rochester Rd	SR 3022	40.698563900	-80.113659560	Potential
10	Butler	Jackson Twp	Perry Hwy	SR 0019	Lindsay Rd / Jackson's Pointe Rd	SR 0528 / Local Rd	40.756118260	-80.117509440	Potential
10	Butler	Jackson Twp	Little Creek Rd	SR 3025	Mercer Rd	T-335	40.811075240	-80.123502650	Potential
10	Butler	Jefferson Twp	Freeport Rd	SR 0356	Great Belt Rd	Local Road	40.797626480	-79.820769290	Potential
10	Butler	Middlesex Twp	Pittsburgh Rd	SR 0008	Mars Crider Rd / Overbrook Rd	SR 0228 / T-641	40.702243610	-79.936190320	Potential
10	Butler	Middlesex Twp	Mars Crider Rd	SR 0228	Park Rd / Harbison Rd	Local Road	40.698081150	-79.948088750	Potential
10	Butler	Middlesex Twp	Mars Crider Rd	SR 0228	Harbison Rd / Park Rd	T-383 / T-481	40.698128510	-79.947898340	Potential
10	Butler	Penn Twp	Pittsburgh Rd	SR 0008	E Airport Rd	T-497	40.780239200	-79.929836970	Potential
10	Butler	Slippery Rock Twp	William Flinn Hw	SR 0008	Branchton Rd	SR 4010	41.074474230	-80.002205350	Potential
10	Butler	Summit Twp	Benjamin Franklin Hwy	SR 0422	Bonniebrook Rd	SR 1025 / T-810	40.866420900	-79.829107620	Potential
10	Butler	Zelienople Boro	Main St	SR 0019	Grandview Ave	SR 0068 / Local Road	40.797099010	-80.137321310	Potential
10	Indiana	East Mahoning Twp	SR 0119 Hwy	SR 0119	Main St	SR 0403	40.768014010	-79.056755760	High Potential
10	Indiana	White Twp	Oakland Ave	SR 0286	Regency Mall Ent	Private Dwy	40.614938590	-79.171651100	High Potential
10	Indiana	White Twp	Oakland Ave	SR 0286	Indian Springs Rd	SR 4422	40.604016460	-79.185712110	High Potential
10	Indiana	White Twp	Sixth St	SR 0954	Indian Springs Rd / Private Dwy	SR 4005 / Private Dwy	40.600073540	-79.146852170	High Potential
10	Indiana	White Twp	Philadelphia St	SR 4032	Shelly Dr / Mill Run Dr	T-416 / T-801	40.622268690	-79.189155180	High Potential
10	Indiana	White Twp	Philadelphia St / West Pike Rd	SR 4032 / SR 4422	Ben Franklin Rd	SR 4422 / T-411	40.621517520	-79.193843440	High Potential
10	Indiana	Clymer Boro	Franklin St	SR 0286	6th St	SR 0403 / Local Rd	40.668207680	-79.011746760	Low Potential
10	Indiana	Indiana Boro	6th St	SR 0954	Locust St	Local Rd	40.617707230	-79.150953480	Low Potential
10	Indiana	Indiana Boro	6th St	SR 0954	Maple St	Local Rd	40.613791740	-79.150472170	Low Potential
10	Indiana	Indiana Boro	6th St	SR 0954	Church St	Local Rd	40.621540770	-79.150817790	Low Potential
10	Indiana	Indiana Boro	Ninth St	SR 0954	Chestnut St	Local Road	40.626805540	-79.155940700	Low Potential
10	Indiana	Indiana Boro	7th St	SR 4005	Church St	Local Rd	40.621564140	-79.153325650	Low Potential
10	Indiana	Indiana Boro	Wayne Ave	SR 4005	Grant St	Local Rd	40.615826780	-79.155181020	Low Potential
10	Indiana	Burrell Twp	SR 0119 Hwy / Old Wm Penn Hwy	SR 0119 / SR 2002	Pine Ridge Rd / Park and Ride Rd	SR 2002	40.443659260	-79.220077570	Potential
10	Indiana	Homer City Boro	Patrick J Stapleton Hwy	SR 0119	Ridge Ave	SR 0056 / SR 3056	40.538505240	-79.155675040	Potential
10	Indiana	Indiana Boro	Water St	Local Rd	9th St	SR 0954	40.624358870	-79.155999810	Potential
10	Indiana	Indiana Boro	Oakland Ave	SR 0286	Maple St/13th St	Local Rd	40.615553940	-79.166039100	Potential
10	Indiana	Indiana Boro	Philadelphia St	SR 0286	5th St	SR 4007 / Local Rd	40.622885140	-79.148221650	Potential
10	Indiana	Indiana Boro	Philadelphia St	SR 0286	6th St	SR 0954 / Local Rd	40.622922440	-79.150785990	Potential
10	Indiana	Indiana Boro	4th St	SR 4005	Water St	Local Rd	40.624264940	-79.145657060	Potential
10	Indiana	Indiana Boro	Wayne Ave	SR 4005	Maple St	Local Rd	40.614118180	-79.156752040	Potential
10	Indiana	Indiana Boro	Philadelphia St	SR 4032	13th St	Local Rd	40.623223540	-79.165797530	Potential
10	Indiana	Indiana Boro	Philadelphia St	SR 4032 / SR 0286	9th St	SR 0286 / SR 0954	40.622979930	-79.155867360	Potential
10	Indiana	Pine Twp	Benjamin Franklin Hw	SR 0422	Sr 0403 Sh	SR 0403	40.553075970	-78.922288340	Potential
10	Indiana	White Twp	Oakland Ave	SR 0286	Warren Rd / Rose St	SR 3024 / SR 3043	40.614227280	-79.173581840	Potential
10	Indiana	White Twp	Indian Springs Rd / Benjamin Franklin Hwy	SR 4422	Warren Rd	SR 3024	40.610115220	-79.188685590	Potential

District 11-0

The intersections shown were identified by the initial screening of the SPC Regional Roundabout Study. The roundabout potential refers to a minimum threshold for existing crashes and ease of implementation given apparent intersection constraints (ROW, utilities, permitting). Each intersection requires further investigation for a final determination.

District	County	Municipality	Major Road Name	Major Designation	Minor Road Name	Minor Designation	Lat	Long	Roundabout Potential
11	Allegheny	Bethel Park Boro	Library Rd	SR 0088	Bethel Church Rd / Broughton Rd	SR 2040 / Local Rd	40.345357840	-80.027340890	High Potential
11	Allegheny	Castle Shannon Boro	Library Rd	SR 0088	Grove Rd	Local Rd	40.366530010	-80.014617010	High Potential
11	Allegheny	Churchill Boro	Penn Ave	SR 2110	Beulah Rd	SR 0130	40.445939590	-79.848443370	High Potential
11	Allegheny	Fawn Twp	Bakerstown Rd	SR 1028	Bull Creek Rd / Thompson Rd	SR 1034 / T-721	40.650032810	-79.799023210	High Potential
11	Allegheny	Forward Twp	Scenery Dr	SR 0048	Round Hill Rd	Local Rd	40.240883240	-79.860122250	High Potential
11	Allegheny	Franklin Park Boro	Wexford Bayne Rd	SR 0910	Brandt School Rd / VIP Dr	Local Rd	40.615954590	-80.093205960	High Potential
11	Allegheny	Heidelberg Boro	Washington Pk	SR 0050	Greentree Rd / Private Dwy	SR 3052 / Local Rd	40.387643420	-80.090818940	High Potential
11	Allegheny	Jefferson Hills Boro	Clairton Rd	SR 0885	Coal Valley Rd / Baker Dr	Local Rd	40.322077970	-79.925854190	High Potential
11	Allegheny	McCandless Twp	Ingomar Rd / Highland Rd	Local Rd	Ingomar Rd / Ingomar Hts Rd	SR 4070 / Local Rd	40.582230480	-80.062885310	High Potential
11	Allegheny	McCandless Twp	Perry Hwy	SR 0019	W Ingomar Rd / Ingomar Rd	SR 4070	40.582052730	-80.038079030	High Potential
11	Allegheny	McCandless Twp	McKnight Rd	SR 4003	Cumberland Rd	SR 4024	40.572133450	-80.023505940	High Potential
11	Allegheny	McCandless Twp	Duncan Ave	SR 4024	Peebles Rd	SR 4064	40.567386990	-80.006953250	High Potential
11	Allegheny	McCandless Twp	Babcock Blvd	SR 4024 / SR4031	Cumberland Rd	SR 4024 / Local Rd	40.572013180	-80.016385120	High Potential
11	Allegheny	Moon Twp	Beaver Grade Rd	SR 3077	Thorn Run Rd / Thorn Run Rd Exit	SR 3087 / T-388	40.505462460	-80.207553520	High Potential
11	Allegheny	Moon Twp	University Blvd	SR 3109	Campus Dr / Private Dwy	Local Rd / Private Dwy	40.519575010	-80.217901190	High Potential
11	Allegheny	Mt Lebanon Twp	Washington Rd	SR 0019	Gilkeson Rd / Connor Rd	SR 3038	40.355228260	-80.050180770	High Potential
11	Allegheny	Mt Lebanon Twp	Gilkeson Rd / Painters Run Rd	SR 3038 / Local Road	Cedar Blvd	Local Rd	40.361862230	-80.064371420	High Potential
11	Allegheny	North Fayette Twp	Lincoln Hwy	SR 0030	Steuben St	T-439	40.440540420	-80.238495110	High Potential
11	Allegheny	North Versailles Twp	Mosside Blvd	SR 0048	Broadway Blvd	SR 0130	40.397671360	-79.769322320	High Potential
11	Allegheny	North Versailles Twp	McKeesport Blvd	SR 2037	Navy Marine Corp Way	SR 2068 / Local Rd	40.383139750	-79.827649320	High Potential
11	Allegheny	Ohara Twp	Fox Chapel Rd / Old Freeport Rd	Local Rd	Freeport Rd	SR 1001	40.487527250	-79.882718320	High Potential
11	Allegheny	Penn Hills Twp	Allegheny River Blvd	SR 0130 / SR 2073	Sandy Creek Rd	SR 0130	40.485178790	-79.856879530	High Potential
11	Allegheny	Penn Hills Twp	Frankstown Rd	SR 0400	Robinson Blvd / Verona Rd	SR 2058	40.461058620	-79.866323770	High Potential
11	Allegheny	Penn Hills Twp	Saltsburg Rd	SR 0400 / SR 2058	Frankstown Rd / Hulton Rd	SR 0400 / SR 2078	40.484185600	-79.819294520	High Potential
11	Allegheny	Pine Twp	Gibsonia Rd / Wexford Rd	SR 0910	Babcock Bl	SR 4031	40.633506980	-80.003961000	High Potential
11	Allegheny	Pine Twp	Babcock Blvd	SR 4031	Warrendale Rd	SR 4068	40.658404530	-80.008609800	High Potential
11	Allegheny	Plum Boro	Golden Mile Hwy	SR 0286	New Texas Rd	SR 2075	40.450825780	-79.713561140	High Potential
11	Allegheny	Plum Boro	Saltsburg Rd	SR 0400	Unity Trestle Rd	Local Rd	40.477517590	-79.759438280	High Potential
11	Allegheny	Plum Boro	Old Frankstown Rd / New Texas Rd	SR 2075	Old Frankstown Rd / Sagamore Hill Rd	SR 2066 / Local Road	40.448100830	-79.709524630	High Potential
11	Allegheny	Ross Twp	Union Ave / Gass Rd	SR 4012 / SR 4014	Highland Ave	SR 4012	40.521867600	-80.048207930	High Potential
11	Allegheny	Ross Twp	SR 4044 Hwy / Cemetery Ln	SR 4044 / Local Rd	Perry Hwy	SR 0019	40.503433070	-80.025163530	High Potential
11	Allegheny	Shaler Twp	Mt Royal Blvd	SR 4019	Wetzel Rd / Garden Pl	SR 4006 / Local Rd	40.524691140	-79.962099590	High Potential
11	Allegheny	West Deer Twp	SR 0910 Hwy	SR 0910	Middle Rd	Local Rd	40.618764350	-79.908027210	High Potential
11	Allegheny	West Mifflin Boro	North State St	SR 0837	Coal Valley Rd / New England Rd	Local Rd	40.318543080	-79.899240130	High Potential
11	Allegheny	West Mifflin Boro	Clairton Rd	SR 0885	Lewis Run Rd	SR 2032	40.332428390	-79.933770140	High Potential
11	Allegheny	West Mifflin Boro	Lebanon Church Rd	SR 0885 / SR 2040	Lebanon Rd / Private Dwy	SR 0885 / Local Rd	40.348374960	-79.944798770	High Potential
11	Allegheny	West Mifflin Boro	Buttermilk Hollow Rd	SR 2040 / SR 2045	Pittsburgh McKeesport Blvd	SR 2045	40.358752060	-79.908294490	High Potential
11	Allegheny	West Mifflin Boro	Buttermilk Hollow Rd	SR 2045	Thompson Run Rd	SR 2052	40.360479550	-79.907690980	High Potential
11	Allegheny	White Oak Boro	Lincoln Way	SR 2031	Long Run Rd / Jacks Run Rd	SR 0048	40.337468270	-79.808748180	High Potential
11	Allegheny	Whitehall Boro	Baptist Rd	SR 3009	Hamilton Rd	SR 3037 / Local Rd	40.351743550	-80.011486000	High Potential
11	Allegheny	Bellevue Boro	Ohio River Blvd	SR 0065	Riverview Ave	SR 4012	40.491567750	-80.061146030	Low Potential
11	Allegheny	Brentwood Boro	Clairton Blvd	SR 0051	Brownsville Rd	Local Rd	40.363775650	-79.984042870	Low Potential
11	Allegheny	Carnegie Boro	Main St	SR 0050	Chestnut St	SR 3048 / SR 3056	40.410090290	-80.082577710	Low Potential
11	Allegheny	Churchill Boro	Beulah Rd	SR 0130	Homer Dr	Local Rd	40.431957600	-79.839188000	Low Potential
11	Allegheny	Churchill Boro	William Penn Hwy	SR 2048	Rodi Rd / Nottingham Dr	SR 0791 / Local Rd	40.438206650	-79.830510130	Low Potential
11	Allegheny	Collier Twp	Washington Pk	SR 0050	Vanadium Rd	Local Rd	40.370107420	-80.100835650	Low Potential
11	Allegheny	East McKeesport Twp	Lincoln Hwy	SR 0030	5th Ave	SR 0148 / Local Rd	40.381097240	-79.811888560	Low Potential

11	Allegheny	Hampton Twp	William Flynn Hwy	SR 0008	E Hardies Rd	SR 4067	40.613878320	-79.947290130	Low Potential
11	Allegheny	Harmar Twp	SR 0910 Hwy / Werner Camp Rd	SR 0910 / Local Rd	Freeport Rd	SR 1001	40.536946790	-79.839181320	Low Potential
11	Allegheny	Heidelberg Boro	Washington Pk / E Railroad St	SR 0050	Collier Ave	SR 3052 / Local Rd	40.388231690	-80.089901260	Low Potential
11	Allegheny	Leetsdale Boro	Ohio River Blvd	SR 0065	Cross St	SR 4036	40.576686250	-80.222426230	Low Potential
11	Allegheny	McCandless Twp	Perry Hwy	SR 0019	Richard Rd / Reichold Rd	SR 4053 / Local Rd	40.609967660	-80.053288860	Low Potential
11	Allegheny	McCandless Twp	McKnight Rd	SR 4003	Babcock Blvd / Peebles Rd	SR 4064	40.554562000	-80.021258350	Low Potential
11	Allegheny	McCandless Twp	McKnight Rd	SR 4003	Blazier Dr	Local Rd	40.585664100	-80.036309520	Low Potential
11	Allegheny	Monroeville Boro	New Wm Penn Hwy	SR 0022	Old Wm Penn Hwy / Private Dwy	Local Rd	40.437851550	-79.739841030	Low Potential
11	Allegheny	Monroeville Boro	Mosside Blvd	SR 0048	Northern Pk	SR 2054	40.433994240	-79.753172540	Low Potential
11	Allegheny	Monroeville Boro	William Penn Hwy	SR 2048	Holiday Ct Rd / Mall Ent Rd	Private Dwy	40.435998930	-79.785326640	Low Potential
11	Allegheny	Monroeville Boro	William Penn Hwy	SR 2048	Center Rd / Stroschein Rd	Local Rd	40.438631280	-79.768981120	Low Potential
11	Allegheny	Mt Lebanon Twp	Cochran Rd	SR 0019 / SR 0121	Beverly Rd	Local Rd	40.387205270	-80.054792250	Low Potential
11	Allegheny	Mt Lebanon Twp	Washington Rd	SR 3069	Shady Dr	Local Rd	40.383280980	-80.043795540	Low Potential
11	Allegheny	North Versailles Twp	Lincoln Hwy	SR 0030	3rd St	Local Rd	40.379324460	-79.806976530	Low Potential
11	Allegheny	North Versailles Twp	Lincoln Hwy	SR 0030	Brinton Rd / Warren Dr	Local Rd	40.384622610	-79.824272260	Low Potential
11	Allegheny	North Versailles Twp	Lincoln Hwy	SR 0030	Park Ave	Local Rd	40.379799020	-79.808309320	Low Potential
11	Allegheny	Penn Hills Twp	Frankstown Rd	SR 0400	Duff Rd / Private Drive	Local Road	40.464837460	-79.828700360	Low Potential
11	Allegheny	Penn Hills Twp	Rodi Rd	SR 0791	Stoneledge Dr	Local Rd	40.456205780	-79.822985170	Low Potential
11	Allegheny	Penn Hills Twp	Rodi Rd / Private Dwy	SR 0791 / Local Rd	Frankstown Rd	SR 0400	40.466192780	-79.826140960	Low Potential
11	Allegheny	Pine Twp	Perry Hwy	SR 0019	N Chapel Rd / Manor Rd/N Church Rd	SR 4073 / T-697 / T-835	40.629363560	-80.056565260	Low Potential
11	Allegheny	Pleasant Hills Boro	Clairton Blvd	SR 0051	Bruceston Rd / Private Dwy	Local Rd / Private Dwy	40.328496360	-79.944859640	Low Potential
11	Allegheny	Pleasant Hills Boro	Clairton Blvd	SR 0051	Old Lebanon Church Rd/Old Clairton Rd	Local Rd	40.340677640	-79.964440190	Low Potential
11	Allegheny	Pleasant Hills Boro	Curry Hollow Rd	SR 2040	Green Dr	Local Rd	40.340182460	-79.967303280	Low Potential
11	Allegheny	Pleasant Hills Boro	Curry Hollow Rd	SR 2040	Keepert Dr	Local Rd	40.336409370	-79.978312350	Low Potential
11	Allegheny	Plum Boro	Golden Mile Hwy	SR 0286	Kane Rd /Private Dwy	Local Rd / Private Dwy	40.457990700	-79.708382570	Low Potential
11	Allegheny	Richland Twp	William Flynn Hwy	SR 0008	Gibsonia Rd	SR 0910	40.634700460	-79.939679410	Low Potential
11	Allegheny	Richland Twp	William Flynn Hwy	SR 0008	Ewalt Rd	T-788	40.625499520	-79.941799670	Low Potential
11	Allegheny	Ross Twp	McKnight Rd	SR 4003	McIntyre Rd / Private Dwy	Local Rd	40.550295620	-80.019133030	Low Potential
11	Allegheny	Ross Twp	McKnight Rd	SR 4003	Browns Ln / Johannanna Dr	Local Rd	40.545805580	-80.016625720	Low Potential
11	Allegheny	Ross Twp	McKnight Rd	SR 4003	Patrick Pl / Ross Towne Ct	Local Rd / Private Dwy	40.537499580	-80.011140790	Low Potential
11	Allegheny	Shaler Twp	William Flynn Hwy	SR 0008	Elfinwild Rd	SR 4024 / Local Rd	40.549567410	-79.959411580	Low Potential
11	Allegheny	Shaler Twp	Babcock Blvd	SR 4009	Geyer Rd / Alley	SR 4002 / Local Rd	40.496127100	-79.976881630	Low Potential
11	Allegheny	South Park Twp	Broughton Rd	SR 2040	Horning Rd / Curry Rd	Local Rd	40.330045970	-79.987348380	Low Potential
11	Allegheny	Stowe Twp	Island Ave	SR 0051	McCoy Rd	Local Rd	40.475438470	-80.064985250	Low Potential
11	Allegheny	West Mifflin Boro	Lebanon Church Rd	SR 2040	Regis Av / Ceco Rd	Local Road	40.347645600	-79.951862080	Low Potential
11	Allegheny	Baldwin Boro	Clairton Bl	SR 0051	Streets Run Rd	SR 2046	40.346367610	-79.973395250	Potential
11	Allegheny	Bethel Park Boro	Bethel Church Rd	Local Road	Logan Rd	SR 3010	40.331272760	-80.052766260	Potential
11	Allegheny	Bethel Park Boro	Library Rd	SR 0088	Brightwood Rd	Local Rd	40.319399280	-80.026944590	Potential
11	Allegheny	Bethel Park Boro	Corrigan Dr / Baptist Rd / South Park Rd	SR 3009 / Local Rd / Local Rd	Library Rd / Corrigan Dr	SR 0088 / Local Rd	40.330531780	-80.022055730	Potential
11	Allegheny	Blawnox Boro	Freeport Rd	SR 1001	Alpha Dr / Private Dwy	Local Rd / Private Dwy	40.491482950	-79.865883560	Potential
11	Allegheny	Castle Shannon Boro	Library Rd	SR 0088	Connor Rd	SR 3038	40.355837190	-80.028217790	Potential
11	Allegheny	Castle Shannon Boro	Library Rd	SR 0088	6th St / Killarney St	Local Rd	40.373728680	-80.006393660	Potential
11	Allegheny	Churchill Boro	Beulah Rd	SR 0130	Lewin Ln	Local Rd	40.438331280	-79.842881650	Potential
11	Allegheny	Collier Twp	Washington Pk	SR 0050	Chartiers Valley Shppg	Private Dwy	40.365293030	-80.108328080	Potential
11	Allegheny	Duquesne City	Duquesne Blvd	SR 0837	Commonwealth Ave / Private Dwy	SR 2044 / Local Rd	40.383095400	-79.857538290	Potential
11	Allegheny	Duquesne City	Dravosburg Rd	SR 0837 / SR 2114	Center St / S Linden St	Local Rd	40.363789710	-79.842814370	Potential
11	Allegheny	Elizabeth Twp	Boston Hollow Rd	SR 0048	Lovedale Rd / Broadlawn Dr	SR 2010 / Local Rd	40.283613750	-79.837405790	Potential
11	Allegheny	Forward Twp	Rainbow Run Rd	SR 0136	Monongahela Rd	SR 0906	40.198942200	-79.869388590	Potential
11	Allegheny	Greentree Boro	Poplar St	Local Rd	Noblestown Rd	SR 0050	40.427939220	-80.053750930	Potential
11	Allegheny	Hampton Twp	William Flynn Hwy	SR 0008	Wildwood Rd / Wildwood Rd Exit	SR 4070	40.590217890	-79.948283990	Potential
11	Allegheny	Hampton Twp	William Flynn Hwy	SR 0008	Mt Royal Blvd	SR 4019	40.584368390	-79.950729700	Potential
11	Allegheny	Harmar Twp	Freeport Rd	SR 1001	W Alpha Dr	T-860	40.537773770	-79.834787160	Potential
11	Allegheny	Harmar Twp	Freeport Rd	SR 1001	E Alpha Dr	T-860	40.538571420	-79.830473470	Potential
11	Allegheny	Jefferson Hills Boro	Clairton Blvd	SR 0051	Jefferson Blvd	Local Rd	40.296974590	-79.919590120	Potential
11	Allegheny	Jefferson Hills Boro	Clairton Blvd	SR 0051	Coal Valley Rd	Local Rd	40.313217060	-79.938625060	Potential
11	Allegheny	Jefferson Hills Boro	Route 0051	SR 0051	Worthington Ave	Local Rd	40.290690930	-79.913371420	Potential
11	Allegheny	Marshall Twp	Perry Hwy	SR 0019	Bakerstown Rd	SR 4052	40.655156450	-80.086859610	Potential

11	Allegheny	Marshall Twp	Perry Hwy	SR 0019	Freeport Rd / Emeryville Dr	SR 4054 / T-877	40.673129970	-80.098333970	Potential
11	Allegheny	Marshall Twp	Perry Hwy	SR 0019	Brush Creek Rd	Local Rd	40.667276470	-80.096343250	Potential
11	Allegheny	Marshall Twp	Bakerstown / Warrendale Rd	SR 4052	Franklin Rd	SR 4061	40.653407430	-80.067881490	Potential
11	Allegheny	McCandless Twp	Perry Hwy	SR 0019	Gloria St / Old Perry Hwy	Local Rd	40.561021860	-80.039372060	Potential
11	Allegheny	McCandless Twp	McKnight Rd	SR 4003	Pine Creek Rd / Old Perry Hwy	SR 4086 / Local Rd	40.586913600	-80.041881920	Potential
11	Allegheny	McCandless Twp	McKnight Rd	SR 4003	Perrymont Rd / Babcock Blvd	SR 4056 / Local Rd	40.558168860	-80.023315590	Potential
11	Allegheny	McCandless Twp	Babcock Blvd	SR 4031	Kummer Rd	Local Rd	40.576129530	-80.014765610	Potential
11	Allegheny	McKees Rocks Boro	Island Ave	SR 0051	McKees Rocks Bridge	SR 3104	40.473536300	-80.062509570	Potential
11	Allegheny	McKeesport City	5th Ave	SR 0148	Pennsylvania Ave	SR 2037	40.358247410	-79.831784140	Potential
11	Allegheny	McKeesport City	Fifth Av	SR 0148	Hartman St	Local Road	40.355175010	-79.835235220	Potential
11	Allegheny	McKeesport City	Lysle Blvd	SR 0148	Evans St / Private Dwy	Local Rd	40.352495400	-79.850984740	Potential
11	Allegheny	McKeesport City	Walnut St	SR 0148	Eden Park Blvd / Retail Dr	Local Rd	40.327346690	-79.840238110	Potential
11	Allegheny	Monroeville Boro	Mossdale Blvd	SR 0048	Haymaker Rd / Gateway Campus Blvd	Local Rd	40.429859870	-79.751248880	Potential
11	Allegheny	Monroeville Boro	William Penn Hwy	SR 2048	Mossdale Blvd / Haymaker Rd	SR 0048 / SR 2057	40.438859590	-79.760494440	Potential
11	Allegheny	Moon Twp	University Blvd	SR 3109	Beaver Grade Rd/Brodhead Rd	SR 3077	40.516937420	-80.221338760	Potential
11	Allegheny	Moon Twp	University Blvd	SR 3109	Patton Dr/Private Dwy	T-330 / Private Dwy	40.506280220	-80.223152950	Potential
11	Allegheny	Moon Twp	University Blvd	SR 3109	Moon Clinton Rd	SR 3090	40.513119150	-80.222348420	Potential
11	Allegheny	Moon Twp	University Blvd / Horizon Dr	SR 3109 / Local Road	Business 60 Hwy	SR 3160	40.500049160	-80.221984960	Potential
11	Allegheny	Mt Lebanon Twp	Bower Hill Rd	Local Road	Segar Rd/Hospital Dr / Lakemont Dr	SR 3033 / Local Rd	40.378231630	-80.064708240	Potential
11	Allegheny	Mt Lebanon Twp	Washington Rd	SR 0019	Beadling Rd	Local Rd	40.368051700	-80.049251380	Potential
11	Allegheny	North Versailles Twp	Lincoln Hwy	SR 0030	Mossdale Blvd	SR 0048	40.367961220	-79.779828070	Potential
11	Allegheny	North Versailles Twp	Lincoln Hwy	SR 0030	Clyde Ave	Local Rd	40.388661890	-79.830259500	Potential
11	Allegheny	North Versailles Twp	Lincoln Hwy	SR 0030	Luehm Ave / N Versailles Plaza	Local Rd / Private Dwy	40.370372760	-79.786251580	Potential
11	Allegheny	North Versailles Twp	5th Ave	SR 0148	Westinghouse Ave / Arcannia St	SR 2037 / Local Rd	40.362264920	-79.826145110	Potential
11	Allegheny	Ohio Twp	Camp Horne Rd	SR 4021 / Local Rd	Ben Avon Rd / Josephs Ln	SR 4021 / Local Rd	40.523766290	-80.071923470	Potential
11	Allegheny	Penn Hills Twp	Frankstown Rd	SR 0400	Coal Hollow Rd / Beulah Rd / Laketon Rd	SR 0130 / Local Rd / Local Rd	40.460226670	-79.842634090	Potential
11	Allegheny	Penn Hills Twp	Frankstown Rd	SR 0400	Nelbon Ave	Local Rd	40.460183230	-79.843937550	Potential
11	Allegheny	Penn Hills Twp	Rodi Rd	SR 0791	Hoover Dr	Local Rd	40.449732020	-79.827039710	Potential
11	Allegheny	Pleasant Hills Boro	Clairton Blvd	SR 0051	Lewis Run Rd / Lindsey Snyder Rd	SR 2032 / Local Rd	40.321088790	-79.942132370	Potential
11	Allegheny	Plum Boro	Golden Mile Hwy	SR 0286	Old Frankstown Rd	SR 2066	40.445830640	-79.713830570	Potential
11	Allegheny	Plum Boro	Golden Mile Hwy	SR 0286	Presque Isle Dr / Sandune Dr	Local Rd	40.463699260	-79.705450710	Potential
11	Allegheny	Plum Boro	Golden Mile Hwy	SR 0286	Holiday Park Dr	Local Rd	40.475589220	-79.707341020	Potential
11	Allegheny	Plum Boro	Hulton Rd / Coxcomb Hill Rd	SR 2082	Hulton Rd	SR 2058	40.527121380	-79.816600150	Potential
11	Allegheny	Richland Twp	William Flynn Hwy	SR 0008	Dickey Rd / Private Dwy	T-709 / Private Dwy	40.644727900	-79.938230440	Potential
11	Allegheny	Richland Twp	Gibsonia Rd	SR 0910	Comm Center Dr	Local Rd	40.633538740	-79.938577830	Potential
11	Allegheny	Robinson Twp	Steubenville Pk	SR 0060	Campbells Run Rd / Private Dwy	Local Rd / Private Dwy	40.448436070	-80.158027500	Potential
11	Allegheny	Robinson Twp	Steubenville Pk	SR 0060	Park Manor Dr / Private Dwy	Local Rd / Private Dwy	40.448092030	-80.162371310	Potential
11	Allegheny	Robinson Twp	Steubenville Pk	SR 0060	Church Hill Rd	T-443	40.444173450	-80.147173410	Potential
11	Allegheny	Robinson Twp	Steubenville Pk	SR 0060	Beaver Grade Rd / Private Dwy	SR 3077 / Private Dwy	40.452053000	-80.133869820	Potential
11	Allegheny	Ross Twp	McKnight Rd	SR 4003	Siebert Rd	SR 4016	40.530582030	-80.009760550	Potential
11	Allegheny	Ross Twp	Peoples Rd / Babcock Blvd	SR 4009 / SR 4011	Babcock Blvd	SR 4009	40.506109580	-79.990495600	Potential
11	Allegheny	Ross Twp	Rochester Rd	SR 4011	Glenmore Ave / 6th Ave	Local Rd	40.520804900	-80.025169660	Potential
11	Allegheny	Scott Twp	Washington Pk	SR 0050	Raceway Plaza Ent Rd	Private Dwy	40.386663200	-80.092190900	Potential
11	Allegheny	Scott Twp	Greentree Rd	SR 0121	Forsythe Rd / Greenvalley Dr	SR 3056 / Local Rd	40.399693890	-80.064899630	Potential
11	Allegheny	Scott Twp	Greentree Rd	SR 3052	Hope Hollow Rd / Swallow Hill Rd	Local Rd	40.390678590	-80.074246160	Potential
11	Allegheny	Sewickley Boro	Ohio River Blvd	SR 0065	Sewickly Bridge / Broad St	SR 4025 / Local Rd	40.536536620	-80.184311730	Potential
11	Allegheny	Shaler Twp	William Flynn Hwy	SR 0008	Pennview St / Private Dwy	Local Rd / Private Dwy	40.513838560	-79.951417010	Potential
11	Allegheny	Shaler Twp	Mt Royal Blvd	SR 4019	Kleber Rd / Vilsack Rd	SR 4060 / Local Rd	40.535639430	-79.970499860	Potential
11	Allegheny	Shaler Twp	Mt Royal Blvd	SR 4019	Elfinwild Rd	SR 4024	40.553465360	-79.971254200	Potential
11	Allegheny	South Fayette Twp	Millers Run Rd	SR 0050	Hickory Grade Rd / Private Dwy	Local Rd / Private Dwy	40.356979290	-80.120382800	Potential
11	Allegheny	South Fayette Twp	SR 0050 Hwy	SR 0050	Unknown Rd / Alpine Rd	Local Rd	40.345386790	-80.154697370	Potential
11	Allegheny	South Fayette Twp	Washington Ave / Washington Pk	SR 0050 / SR 3003	Washington Av / Private Dwy	SR 0050	40.354515400	-80.114763110	Potential
11	Allegheny	South Fayette Twp	Washington Pk	SR 3003	Boyce Rd	SR 3006	40.333511100	-80.133404870	Potential
11	Allegheny	South Fayette Twp	Boyce Rd	SR 3006	Mayview Rd	SR 3005	40.319156810	-80.117558870	Potential
11	Allegheny	Turtle Creek Boro	Tri-Boro Ave	SR 0130	Thompson St	SR 2065 / Local Rd	40.406391910	-79.826905460	Potential
11	Allegheny	Turtle Creek Boro	Tri-Boro Ave	SR 0130	Beulah Rd / Shaw St	SR 0130 / Local Rd	40.406438400	-79.829918760	Potential
11	Allegheny	Upper St Clair Twp	Washington Rd	SR 0019	Fort Couch Rd	SR 3036 / Local Rd	40.346976000	-80.054948480	Potential

11	Allegheny	Upper St Clair Twp	McLaughlin Run Rd	SR 3004	McMillan Rd / Lesnett Rd	SR 3034 / Local Rd	40.345045490	-80.082177360	Potential
11	Allegheny	West Deer Twp	Bakerstown Rd	SR 1028	Saxonburg Blvd	SR 1013	40.653967780	-79.838757310	Potential
11	Allegheny	West Mifflin Boro	Duquesne Blvd	SR 0837	Hoffman Blvd	Local Rd	40.384945110	-79.862577340	Potential
11	Allegheny	West Mifflin Boro	Clairton Rd	SR 0885	Century III Mall / New England Rd	Local Road	40.340349980	-79.938195770	Potential
11	Allegheny	West Mifflin Boro	Lebanon Church Rd	SR 0885 / SR 2040	Clariton Rd	SR 0885	40.348891380	-79.939018930	Potential
11	Allegheny	West Mifflin Boro	Lebanon Church Rd	SR 2040	Delwar Rd / Private Dwy	SR 2047 / Private Dwy	40.348165810	-79.947308970	Potential
11	Allegheny	Whitaker Boro	Whitaker St	SR 2049	Mifflin St	SR 2098 / Local Rd	40.398614090	-79.885301530	Potential
11	Allegheny	White Oak Boro	Jacks Run Rd	SR 0048	Oak Park Mall Ent / Rainbow Shopping Ct Ent	Private Dwy	40.338080560	-79.806767290	Potential
11	Beaver	Aliquippa City	Brodhead Rd	SR 3007	Chapel Rd	SR 3005	40.613953640	-80.285017090	High Potential
11	Beaver	Aliquippa City	Mill St / Kennedy Blvd	SR 3016	Brodhead Rd	SR 3007	40.608093470	-80.282643050	High Potential
11	Beaver	Baden Boro	Ohio River Blvd	SR 0065	Logan Ln / Private Dwy	Local Rd / Private Dwy	40.626334970	-80.229132660	High Potential
11	Beaver	Beaver Falls City	4th Ave	SR 0018	Wallace Run Rd / Glads St	SR 0551	40.788071160	-80.332767070	High Potential
11	Beaver	Beaver Falls City	College Ave	SR 0018	Eastvale Bridge	SR 0588	40.766129470	-80.319147160	High Potential
11	Beaver	Big Beaver Boro	Big Beaver Blvd	SR 0018	Fairlane Blvd / Arthur St	SR 0351	40.834303610	-80.327865810	High Potential
11	Beaver	Center Twp	Brodhead Rd	SR 0018 / SR 3007	Frankfort Rd / Old Brodhead Rd	SR 0018 / SR 3002	40.669786810	-80.312534650	High Potential
11	Beaver	Darlington Twp	Constitution Blvd	SR 0051	Taggart Rd / Little Beaver Rd	SR 4002	40.835480350	-80.493775150	High Potential
11	Beaver	Economy Boro	Conway Wallrose Rd	SR 0989 / SR 2005	Ridge Rd Exit	SR 0989	40.669210340	-80.192075560	High Potential
11	Beaver	Greene Twp	Lincoln Hwy	SR 0030	Hookstown Frankfort Rd	SR 0168	40.579146650	-80.481316750	High Potential
11	Beaver	Hopewell Twp	Gringo-Clinton Rd	SR 0151	Brodhead Rd / Heights Rd	SR 3007 / SR 3038	40.570092320	-80.256998460	High Potential
11	Beaver	Monaca Boro	Pennsylvania Ave	SR 0051 / SR 4044	17th St	SR 0051	40.687076950	-80.270928710	High Potential
11	Beaver	New Brighton Boro	Junction Stretch Rd	SR 0018	Veterans Memorial Bridge / YMCA Drive	Local Rd	40.716002770	-80.299927640	High Potential
11	Beaver	New Sewickley Twp	Sunflower Rd	SR 0068	Glen Eden Rd / Brush Creek Rd	SR 0989 / SR 1019	40.748342170	-80.201363610	High Potential
11	Beaver	New Sewickley Twp	Wallace City Rd	SR 0989	Lovi Rd	SR 2006	40.698033120	-80.188695840	High Potential
11	Beaver	New Sewickley Twp	Freedom Crider Rd	SR 2004	Dunlap Hill Rd	SR 0989	40.676764870	-80.190419960	High Potential
11	Beaver	New Sewickley Twp	Freedom Crider Rd	SR 2004	Lovi Rd	SR 2006	40.680122620	-80.154594120	High Potential
11	Beaver	North Sewickley Twp	Mercer Rd	SR 0065	Chapel Dr / Herrons Landing Rd	SR 1005 / Local Rd	40.831203200	-80.270783900	High Potential
11	Beaver	Raccoon Twp	Frankfort Rd	SR 0018	Green Garden Rd / Shippingport Hill Rd	SR 3016	40.613633750	-80.399558130	High Potential
11	Beaver	Raccoon Twp	Frankfort Rd	SR 0018	Bocktown Rd	SR 0151	40.561411230	-80.403200060	High Potential
11	Beaver	Shippingport Boro	Shippingport Hill Rd	SR 0168 / SR 3016	Shippingport Hill Rd	SR 0168	40.621518820	-80.425049750	High Potential
11	Beaver	South Beaver Twp	Constitution Blvd	SR 0051	Ohioville Rd	SR 0168	40.799641390	-80.433842670	High Potential
11	Beaver	South Heights Boro	S Jordan St	SR 0051	Laurel Rd	SR 0151	40.570359370	-80.233693960	High Potential
11	Beaver	Aliquippa City	Kennedy Blvd	SR 3016	Grand Ave / Sheffield Rd	Local Rd	40.609431260	-80.273618080	Low Potential
11	Beaver	Ambridge Boro	8th St	SR 0989	Maplewood Ave	Local Rd	40.588915260	-80.230471500	Low Potential
11	Beaver	Ambridge Boro	Eighth St	SR 0989	Maplewood Av	Local Road	40.588920790	-80.230419370	Low Potential
11	Beaver	Chippewa Twp	Shenango Rd	SR 4021	Darlington Alley / Ray St	T-329 / Local Rd	40.771586020	-80.375224270	Low Potential
11	Beaver	Hopewell Twp	Gringo - Clinton Rd	SR 0151	Kane Rd	SR 3009	40.568051410	-80.263646030	Low Potential
11	Beaver	Ambridge Boro	Ohio River Blvd	SR 0065	8th St	SR 0989	40.588765780	-80.231930740	Potential
11	Beaver	Ambridge Boro	Ohio River Blvd	SR 0065	49th St	Local Rd	40.582534350	-80.227831460	Potential
11	Beaver	Baden Boro	Ohio River Blvd	SR 0065	Johnson Ave	Local Rd	40.632678160	-80.230138520	Potential
11	Beaver	Beaver Falls City	7th Av	SR 0018	24th St	SR 0588 / Local Road	40.764056300	-80.319121550	Potential
11	Beaver	Beaver Falls City	7th Av	SR 0018	9th St	Local Road	40.749958230	-80.319520120	Potential
11	Beaver	Beaver Falls City	7th Ave	SR 0018	15th St	Local Rd	40.755903650	-80.319352010	Potential
11	Beaver	Chippewa Twp	Constitution Blvd	SR 0051	K-Mart Plaza / Private Dwy	Private Dwy	40.776123530	-80.380367990	Potential
11	Beaver	Chippewa Twp	Constitution Blvd	SR 0051	Braden School Rd / Emmet Dr	SR 4025 / T-406	40.765579580	-80.364288770	Potential
11	Beaver	Chippewa Twp	Constitution Blvd	SR 0051	Darlington Rd	SR 0588 / SR 4021	40.771480500	-80.371633970	Potential
11	Beaver	Chippewa Twp	Shenango Rd	SR 4017	37th St Ext	SR 4040	40.788904710	-80.377451370	Potential
11	Beaver	East Rochester Boro	Ohio River Bl	SR 0051 / SR 0065	17th St	SR 0051	40.695404630	-80.265317850	Potential
11	Beaver	Franklin Twp	Mercer Rd / River Rd	SR 0065 / T-564	Mercer Rd / Zelenople Rd	SR 0065 / SR 0288	40.847355640	-80.275833290	Potential
11	Beaver	Hanover Twp	Lincoln Hwy	SR 0030	Frankfort Rd	SR 0018	40.541955900	-80.410947940	Potential
11	Beaver	Hanover Twp	Lincoln Hwy	SR 0030	Frankfort Rd	SR 0018	40.541780650	-80.410899750	Potential
11	Beaver	Hopewell Twp	Brodhead Rd	SR 3007	Clark Blvd	Local Rd	40.590663290	-80.265384090	Potential
11	Beaver	New Sewickley Twp	Sunflower Rd / Deer Ln Ext	SR 0068 / SR 1024	Sunflower Rd / Big Knob Rd	SR 0068 / SR 1028	40.731288950	-80.239825050	Potential
11	Beaver	North Sewickley Twp	Mercer Rd	SR 0065	Bennetts Run Rd / Concord Church Rd	SR 0588	40.790601350	-80.287511800	Potential
11	Beaver	Patterson Twp	Constitution Blvd	SR 0051	8th St / Braun Rd	SR 4008	40.751797480	-80.343891920	Potential
11	Beaver	Rochester Boro	Rhode Island Ave	SR 6018	Pleasant St	Local Rd	40.699779320	-80.284015380	Potential
11	Beaver	Rochester Boro	Delaware Ave / Private Dwy	SR 6018 / Local Rd	Bridge St / W Madison St	SR 4042	40.702049670	-80.289298650	Potential
11	Beaver	South Beaver Twp	Blackhawk Rd	SR 0251	Old Blackhawk Rd / Georgetown Rd	SR 4029 / Local Road	40.756813090	-80.426452950	Potential

11	Lawrence	Mahoning Twp	Benjamin Franklin Hwy	SR 0422	SR 0551 Hwy	SR 0551	41.052813800	-80.439272480	High Potential
11	Lawrence	New Castle City	Butler Ave / Adams St	SR 2004 / Local Rd	Cascade St	SR 1007	40.989313690	-80.319254490	High Potential
11	Lawrence	Shenango Twp	E Washington St	SR 0065	Cascade St	SR 1007	40.979791830	-80.320328440	High Potential
11	Lawrence	Wilmington Twp	Neshannock Ave	SR 0208	Mercer Rd	SR 1005	41.120255610	-80.293022370	High Potential
11	Lawrence	Ellwood City Boro	Lawrence Av	SR 0351 / Local Road	Fourth St	SR 0351	40.858535710	-80.285711840	Low Potential
11	Lawrence	Ellwood City Boro	Fifth St	SR 2017 / Local Road	Lawrence Av	SR 0351	40.858513310	-80.287260840	Low Potential
11	Lawrence	Hickory Twp	Harlandsburg Rd	SR 0108	State Rd	SR 0388	41.012862040	-80.269178530	Low Potential
11	Lawrence	New Castle City	Jefferson St	SR 0018	Washington St	Local Rd	40.999799220	-80.347099480	Low Potential
11	Lawrence	New Castle City	Jefferson St	SR 0018	Washington St	Local Rd	41.000094630	-80.347110080	Low Potential
11	Lawrence	New Castle City	Jefferson St	SR 0018	North St	Local Rd	41.001334240	-80.347158090	Low Potential
11	Lawrence	New Castle City	Mill St	SR 1005 / Local Rd	Falls St	Local Rd	41.002428090	-80.344370320	Low Potential
11	Lawrence	New Castle City	Butler Ave	SR 2004	Ray St	Local Rd	40.993646860	-80.331217750	Low Potential
11	Lawrence	New Castle City	Grove St	SR 2004	Mill St	Local Road	40.997313810	-80.344171040	Low Potential
11	Lawrence	New Wilmington Boro	New Castle St	SR 0158 / Local Road	Neshannock Ave	SR 0158 / SR 0208	41.122448540	-80.335491470	Low Potential
11	Lawrence	Shenango Twp	E Washington St	SR 0065	Frank Ave	Local Rd	40.980201840	-80.320851650	Low Potential
11	Lawrence	Ellwood City Boro	Line Av	SR 0065	Wampum Av	SR 0288	40.865223060	-80.287020930	Potential
11	Lawrence	Neshannock Twp	Wilmington Rd	SR 0018	Clen Moore Blvd	T-509	41.019124560	-80.354381710	Potential
11	Lawrence	Neshannock Twp	Wilmington Rd	SR 0018	Maitland Ln	SR 1002	41.036369990	-80.355932660	Potential
11	Lawrence	Neshannock Twp	Highland Ave	SR 1005	Old Plank Rd / McCarty Ln	SR 1003 / T-552	41.028425950	-80.338450490	Potential
11	Lawrence	Neshannock Twp	Mercer Rd	SR 1005	Sunset Valley Rd/Mitchell Rd	T-561	41.062901410	-80.330622220	Potential
11	Lawrence	Neshannock Twp	Mitchell Rd	SR 4012 / T-561	Wilmington Rd	SR 0018	41.065038240	-80.359976370	Potential
11	Lawrence	New Castle City	Jefferson St	SR 0018	Wallace Ave	Local Rd	41.006536330	-80.347358050	Potential
11	Lawrence	New Castle City	E Washington St	SR 0065	Butler Ave / Taylor St	SR 2004	40.994273450	-80.334265490	Potential
11	Lawrence	New Castle City	E Washington St	SR 0065	Ray St/Jr High St / Franklin Ave	Local Rd	40.991959930	-80.331728670	Potential
11	Lawrence	New Castle City	E Washington St	SR 0065 / Local Rd	N Croton Ave / S Croton Ave	SR 0108	40.999535150	-80.342023920	Potential
11	Lawrence	New Castle City	Croton Ave	SR 0108	Cascade St	SR 1007	41.007769550	-80.322484950	Potential
11	Lawrence	New Castle City	Falls St	SR 0224 / Local Rd	Jefferson St	SR 0018	41.002452860	-80.347197480	Potential
11	Lawrence	New Castle City	Butler Ave	SR 2004	Maryland Ave / Private Dwy	Local Rd / Private Dwy	40.990470930	-80.321372880	Potential
11	Lawrence	North Beaver Twp	Mahoning Ave	SR 0018	Galilee Rd	SR 0168	40.921182710	-80.376157130	Potential
11	Lawrence	Union Twp	State St	SR 0224	Dworman Wy / Winter Rd	T-380	41.013208680	-80.397270280	Potential
11	Lawrence	Union Twp	State St	SR 0224	Scotland Ln	T-406	41.006594830	-80.377342490	Potential
11	Lawrence	Union Twp	Benjamin Franklin Hwy	SR 0422	Harbor Bridge Edenburg Rd	SR 4004	41.035350450	-80.405349460	Potential
11	Lawrence	Union Twp	Old Youngstown Rd	SR 4007	Harbor Bridge Edenburg Rd	SR 4004	41.035181280	-80.409455420	Potential

City of Pittsburgh

The intersections shown were identified by the initial screening of the SPC Regional Roundabout Study. The roundabout potential refers to a minimum threshold for existing crashes and ease of implementation given apparent intersection constraints (ROW, utilities, permitting). Each intersection requires further investigation for a final determination.

District	County	Municipality	Major Road Name	Major Designation	Minor Road Name	Minor Designation	Lat	Long	Roundabout Potential
11	Allegheny	Pittsburgh City	Allegheny River Blvd	SR 0008	Washington Blvd / Private Dwy	SR 0008	40.484231070	-79.907842810	High Potential
11	Allegheny	Pittsburgh City	Washington Blvd	SR 0008	Negley Run Blvd	Local Rd	40.470261350	-79.908533670	High Potential
11	Allegheny	Pittsburgh City	Perrysville Ave	SR 0019	Ivory Ave	Local Rd	40.498263830	-80.020268460	High Potential
11	Allegheny	Pittsburgh City	Saw Mill Run Blvd	SR 0051	Library Rd / SR 9120 Connector Rd	SR 0088 / SR 9120	40.382242340	-79.995891100	High Potential
11	Allegheny	Pittsburgh City	Ohio River Blvd	SR 0065	McKees Rocks Bridge / Brighton Hts Blvd	SR 3104 / Local Rd	40.479029350	-80.043153050	High Potential
11	Allegheny	Pittsburgh City	E Carson St	SR 0837	22nd St	Local Road	40.428384990	-79.974076470	High Potential
11	Allegheny	Pittsburgh City	2nd Ave	SR 0885	Hot Metal St	Local Rd	40.430030930	-79.957757810	High Potential
11	Allegheny	Pittsburgh City	Mifflin Rd	SR 0885	Glass Run Rd	SR 3098	40.389928770	-79.933354960	High Potential
11	Allegheny	Pittsburgh City	Mifflin Rd	SR 0885 / SR 2045	Lebanon Rd	SR 0885	40.379626910	-79.925527380	High Potential
11	Allegheny	Pittsburgh City	Freeport Rd	SR 1001	St Margaret Dr / Private Dwy	Local Rd / Private Dwy	40.487167530	-79.895056020	High Potential
11	Allegheny	Pittsburgh City	Evergreen Rd	SR 4009	Ivory Ave	Local Rd	40.495764970	-80.008024260	High Potential
11	Allegheny	Pittsburgh City	Shady Ave	Local Rd	Wilkins Ave	SR 2108	40.443847810	-79.920507800	Low Potential
11	Allegheny	Pittsburgh City	Spring Garden Ave	Local Rd	Madison Ave	SR 4099	40.457270410	-79.997845410	Low Potential
11	Allegheny	Pittsburgh City	5th Ave	SR 0008	Hamilton Ave	Local Rd	40.457212130	-79.909062680	Low Potential
11	Allegheny	Pittsburgh City	5th Ave / Washington Blvd	SR 0008	Frankstown Ave	Local Rd	40.458671990	-79.907968870	Low Potential
11	Allegheny	Pittsburgh City	Penn Av	SR 0008	Braddock Av	Local Road	40.447242610	-79.895393140	Low Potential
11	Allegheny	Pittsburgh City	Penn Ave	SR 0008	N Dallas Ave / S Dallas Ave	SR 0400 / SR 2108	40.451511310	-79.908154870	Low Potential
11	Allegheny	Pittsburgh City	Penn Ave	SR 0008 / SR 0400	5th Ave	SR 0008 / Local Rd	40.454030700	-79.912393620	Low Potential
11	Allegheny	Pittsburgh City	Banksville Rd	SR 0019	Wenzell Ave/Carnahan Rd	Local Rd	40.407161590	-80.033819060	Low Potential
11	Allegheny	Pittsburgh City	Saw Mill Run Blvd	SR 0019	Wabash St	Local Rd	40.432783780	-80.028231370	Low Potential
11	Allegheny	Pittsburgh City	Saw Mill Run Blvd / West End Bridge	SR 0019	Carson St	SR 0837	40.444182040	-80.028138820	Low Potential
11	Allegheny	Pittsburgh City	SR 0028 Hwy / Gen Robinson St	SR 0028 / Local Rd	Anderson St	Local Rd	40.448932940	-80.000733580	Low Potential
11	Allegheny	Pittsburgh City	Saw Mill Run Blvd	SR 0051	Nobles Ln	Local Rd	40.395361980	-79.997404490	Low Potential
11	Allegheny	Pittsburgh City	Saw Mill Run Blvd	SR 0051	Warrington Ave	Local Rd	40.415029820	-80.011260670	Low Potential
11	Allegheny	Pittsburgh City	Saw Mill Run Blvd	SR 0051	Bausman St / Private Dwy	Local Rd / Private Dwy	40.411019420	-80.005938540	Low Potential
11	Allegheny	Pittsburgh City	Baum Bl	SR 0400	Roup Av	Local Road	40.458094960	-79.934555390	Low Potential
11	Allegheny	Pittsburgh City	Baum Blvd	SR 0400	Morewood Ave	Local Rd	40.454951980	-79.945248570	Low Potential
11	Allegheny	Pittsburgh City	Baum Blvd	SR 0400	Liberty Ave / Atlantic Ave	Local Rd	40.456579680	-79.939669080	Low Potential
11	Allegheny	Pittsburgh City	Bigelow Blvd	SR 0400	Herron Ave / Paulowna St	Local Rd	40.455654380	-79.966035290	Low Potential
11	Allegheny	Pittsburgh City	Penn Ave	SR 0400	Liberty Blvd / Private Dwy	Local Rd / Private Dwy	40.457511000	-79.917505700	Low Potential
11	Allegheny	Pittsburgh City	Penn Ave	SR 0400	Shady Ave	Local Rd	40.459837700	-79.920905960	Low Potential
11	Allegheny	Pittsburgh City	Craig St	SR 0400 / Local Rd	Baum Blvd	SR 0400	40.454012730	-79.953335540	Low Potential
11	Allegheny	Pittsburgh City	East Carson St	SR 0837	10th St	Local Rd	40.428704920	-79.988294570	Low Potential
11	Allegheny	Pittsburgh City	East Carson St	SR 0837	18th St	Local Rd	40.428721710	-79.980117150	Low Potential
11	Allegheny	Pittsburgh City	East Carson St	SR 0837	1st St	Local Rd	40.430577130	-80.000497200	Low Potential
11	Allegheny	Pittsburgh City	East Carson St	SR 0837	Sarah St	Local Rd	40.425438090	-79.964506610	Low Potential
11	Allegheny	Pittsburgh City	W Carson St	SR 0837 / SR 0051	SR 0051 Hwy	SR 0051	40.444651530	-80.028851910	Low Potential
11	Allegheny	Pittsburgh City	2nd Ave	SR 0885 / Local Rd	Bates St / Technology Dr	SR 0885 / Local Rd	40.431141140	-79.959212900	Low Potential
11	Allegheny	Pittsburgh City	Blvd of the Allies	SR 0885 / Local Rd	Bates St	SR 0885 / Local Rd	40.435130190	-79.956410760	Low Potential
11	Allegheny	Pittsburgh City	Forbes Ave	SR 2108	Craft Ave	Local Rd	40.437124520	-79.963046970	Low Potential
11	Allegheny	Pittsburgh City	Forbes Ave	SR 2108	McKee Pl	Local Rd	40.439816900	-79.959352740	Low Potential
11	Allegheny	Pittsburgh City	Butler St	SR 2122	Main St	Local Rd	40.469763920	-79.960925570	Low Potential
11	Allegheny	Pittsburgh City	Penn Ave	SR 2122	32nd St	Local Rd	40.460828580	-79.969846640	Low Potential
11	Allegheny	Pittsburgh City	10th St Bypass	SR 2128	Ft Duquesne Blvd	Local Rd	40.445768350	-79.998226950	Low Potential
11	Allegheny	Pittsburgh City	Liberty Bridge	SR 3069	McArdle Rd	Local Rd	40.429356540	-79.999106380	Low Potential
11	Allegheny	Pittsburgh City	W Liberty Av	SR 3069	Pioneer Av / Hargrove St	Local Road	40.412926020	-80.010024810	Low Potential
11	Allegheny	Pittsburgh City	Madison Ave	SR 4099	Tripoli St	Local Rd	40.456567060	-79.997611820	Low Potential

11	Allegheny	Pleasant Hills Boro	Clairton Blvd	SR 0051	Bruceston Rd / Private Dwy	Local Rd / Private Dwy	40.328496360	-79.944859640	Low Potential
11	Allegheny	Pleasant Hills Boro	Clairton Blvd	SR 0051	Old Lebanon Church Rd/Old Clairton Rd	Local Rd	40.340677640	-79.964440190	Low Potential
11	Allegheny	Pleasant Hills Boro	Curry Hollow Rd	SR 2040	Green Dr	Local Rd	40.340182460	-79.967303280	Low Potential
11	Allegheny	Pleasant Hills Boro	Curry Hollow Rd	SR 2040	Keepport Dr	Local Rd	40.336409370	-79.978312350	Low Potential
11	Allegheny	Pittsburgh City	Bloomfield Bridge / Blessing St	Local Rd	Bigelow Blvd	SR 0400	40.458653790	-79.957527380	Potential
11	Allegheny	Pittsburgh City	Butler St	SR 0008	Baker St / Private Dwy	Local Rd	40.487836380	-79.920064240	Potential
11	Allegheny	Pittsburgh City	Butler St	SR 0008 / SR 2122	62nd St Bridge	SR 0008	40.488413110	-79.937145120	Potential
11	Allegheny	Pittsburgh City	Banksville Rd	SR 0019	Potomac Ave	Local Rd	40.403499300	-80.040550080	Potential
11	Allegheny	Pittsburgh City	Marshall Ave	SR 0019	Brighton Rd	Local Rd	40.466889710	-80.025022650	Potential
11	Allegheny	Pittsburgh City	Saw Mill Run Blvd	SR 0051	Crane Ave	Local Rd	40.416633110	-80.014330250	Potential
11	Allegheny	Pittsburgh City	W Carson St	SR 0051	Corliss St	Local Rd	40.452801480	-80.039244710	Potential
11	Allegheny	Pittsburgh City	East Carson St	SR 0837	Smithfield St / Busway	SR 3027 / Local Rd	40.432113780	-80.003879990	Potential
11	Allegheny	Pittsburgh City	West Liberty Ave	SR 3069	Brookline Blvd / Wenzell Ave	Local Rd	40.398356710	-80.026068210	Potential
11	Allegheny	Pittsburgh City	West Liberty Ave	SR 3069	Cape May Ave / Private Dwy	Local Rd / Private Dwy	40.408631350	-80.017516290	Potential

District 12-0

The intersections shown were identified by the initial screening of the SPC Regional Roundabout Study. The roundabout potential refers to a minimum threshold for existing crashes and ease of implementation given apparent intersection constraints (ROW, utilities, permitting). Each intersection requires further investigation for a final determination.

District	County	Municipality	Major Road Name	Major Designation	Minor Road Name	Minor Designation	Lat	Long	Roundabout Potential
12	Allegheny	New Kensington City	Tarentum Rd	SR 0366	Freeport Rd / Leechburg Rd	Local Road	40.586912950	-79.749428710	High Potential
12	Fayette	Georges Twp	Morgantown Rd	SR 0119	Big Six Rd	SR 3014	39.819995260	-79.780789450	High Potential
12	Fayette	Georges Twp	Dry Knob Rd	SR 3014	Dry Knob Rd / Hunters Way	SR 3029 / Local Road	39.818013130	-79.774436370	High Potential
12	Fayette	German Twp	Roy E Furman Hwy / McClellandtown Rd	SR 0021	Ball Hill Rd / Leckrone Highhouse Dr	SR 0166 / SR 3012	39.870493440	-79.890183820	High Potential
12	Fayette	Menallen Twp	National Pk	SR 0040	Searights Herbert Rd / Pleasant View Smock Rd	SR 4010	39.954780120	-79.804432160	High Potential
12	Fayette	North Union Twp	Pittsburgh Rd	SR 0051	Northgate Dr / Private Dwy	SR 4039 / Private Dwy	39.922287960	-79.726440520	High Potential
12	Fayette	North Union Twp	Gallatin Av Et	SR 1020	Edison St	SR 1024	39.922052900	-79.701627110	High Potential
12	Fayette	North Union Twp	Connellsville St	SR 2027	Gallatin Ave Ext / Shady Grove Rd	SR 1020	39.933776610	-79.665104880	High Potential
12	Fayette	Redstone Twp	Hartley Hill Rd	SR 0166	Academy Rd / Stone Church Rd	Local Rd	39.972941370	-79.877335670	High Potential
12	Fayette	South Union Twp	New Salem Rd	SR 4006	Duck Hollow Rd	T-584	39.909506020	-79.769186970	High Potential
12	Fayette	South Union Twp	Matthew Dr	T-911	New Salem Rd	SR 4006	39.909337810	-79.756139840	High Potential
12	Fayette	Uniontown City	Main St / Fayette St	SR 2040	Mt Vernon Ave	SR 2016	39.900762510	-79.731444980	High Potential
12	Fayette	Brownsville Boro	Market St / National Pk	SR 0040	Broadway St	Local Rd	40.021515890	-79.879286370	Low Potential
12	Fayette	Connellsville City	8th St / Memorial Blvd	SR 0119	Crawford Ave	SR 0201 / SR 0711	40.016314290	-79.599843880	Low Potential
12	Fayette	Connellsville City	Memorial Bl	SR 0119	Pittsburgh St / Advance Auto	SR 1031 / Local Road	40.026295820	-79.589456170	Low Potential
12	Fayette	Connellsville City	Crawford Ave	SR 0711	Pittsburgh St	SR 1037	40.017697810	-79.589434370	Low Potential
12	Fayette	Connellsville City	Crawford Ave	SR 0711	7th St	Local Rd	40.016515830	-79.598783590	Low Potential
12	Fayette	Uniontown City	Morgantown St	SR 0051	Main St	SR 2040	39.901004440	-79.726920110	Low Potential
12	Fayette	Uniontown City	Morgantown St	SR 0051	South St / Church St	Local Rd	39.900443230	-79.727353660	Low Potential
12	Fayette	Uniontown City	Morgantown St	SR 0051	Church St / South St	Local Road	39.900408900	-79.727380240	Low Potential
12	Fayette	Uniontown City	Mt Vernon Ave	SR 2016	Berkeley St	Local Rd	39.898937890	-79.733871830	Low Potential
12	Fayette	Brownsville Boro	Market St	SR 0040	5th Ave	Local Rd	40.022111150	-79.880411060	Potential
12	Fayette	Bullskin Twp	Memorial Blvd	SR 0119	Crossroads Rd / Kingview Rd	SR 1042	40.089741290	-79.559135570	Potential
12	Fayette	Bullskin Twp	Memorial Blvd	SR 0119	Pleasant Valley Rd / Greenhouse Rd	SR 0982 / SR 1052	40.055055940	-79.561789020	Potential
12	Fayette	Connellsville City	9th St / Memorial Blvd	SR 0119	Crawford Ave / Veech St	SR 0201 / SR 1051	40.016105840	-79.600902200	Potential
12	Fayette	Connellsville City	Memorial Blvd	SR 0119	Pittsburgh St	SR 1037	40.024769650	-79.590959280	Potential
12	Fayette	Dunbar Twp	University Dr	SR 0119	Laurel Mall Dr / Private Dwy	Private Dwy	39.958066310	-79.650388750	Potential
12	Fayette	Dunbar Twp	Vanderbilt Rd	SR 0201	Ridge Blvd	Local Road	40.022533090	-79.618809730	Potential
12	Fayette	Luzerne Twp	Hartley Hill Rd	SR 0166	New Salem Rd / Kenney Rd	SR 4006	39.952587670	-79.880135200	Potential
12	Fayette	North Union Twp	Main St	SR 0040	Mt Macrina Dr / Uniontown Mall Rd	Private Dwy	39.909235120	-79.743495020	Potential
12	Fayette	North Union Twp	Gallatin Ave Exit	SR 1020	Bute Rd	SR 1051	39.914899870	-79.708226120	Potential
12	Fayette	Perryopolis Boro	Pittsburgh Rd	SR 0051	Constitution St / Barneys Rd	Local Rd	40.089882850	-79.761177660	Potential
12	Fayette	Perryopolis Boro	Pittsburgh Rd	SR 0051	Rehoboth Church Rd / Private Dwy	SR 4046 / Local Road	40.094654310	-79.762088640	Potential
12	Fayette	Point Marion Boro	Main St / Morgantown Rd	SR 0088 / SR 0119	Morgantown St / Penn St	SR 0119 / Local Road	39.739549980	-79.900681860	Potential
12	Fayette	Redstone Twp	National Pk / Redstone Way	SR 0040	Grindstone Rd	SR 0166 / SR 4028	40.010787720	-79.866595580	Potential
12	Fayette	Saltlick Twp	Indian Creek Valley Rd	SR 0381	Hillview Ln / Melcroft Rd	Local Road	40.051554850	-79.389809010	Potential
12	Fayette	South Union Twp	McClellandtown Rd	SR 0021	Gabriels Plaza Rd/Work Plaza Dr	Private Dwy	39.902359190	-79.752046700	Potential
12	Fayette	South Union Twp	National Pk	SR 0040	Northgate Hwy / Matthew Dr	SR 4039 / Local Rd	39.918667580	-79.753840490	Potential
12	Fayette	Uniontown City	Fayette St	SR 2040	Morgantown St	SR 0051 / SR 3019	39.899211120	-79.728272070	Potential
12	Fayette	Uniontown City	Main St	SR 2040	McClellandtown Rd	SR 0021	39.902384900	-79.733860290	Potential
12	Fayette	Uniontown City	Morgantown St	SR 3019	Berkeley St	SR 3021 / Local Rd	39.896329950	-79.730396600	Potential
12	Greene	Cumberland Twp / Monongahela Twp	Roy E Furman Hwy	SR 0021	Dilliner Pt Marion Rd	SR 0088	39.860243450	-79.953997440	High Potential
12	Greene	Franklin Twp	Mt Morris Rd / E High St	SR 0019	Roy E Furman Hwy / Private Dwy	SR 0021 / Private Dwy	39.895792250	-80.162700520	High Potential
12	Greene	Franklin Twp	High St / Roy Furman Hw	SR 0021	Browns Creek Rd	SR 0018	39.898776060	-80.205124660	High Potential
12	Greene	Franklin Twp	Roy E Furman Hwy	SR 0021	Miller Ln	T-683	39.899254110	-80.148079820	High Potential
12	Greene	Morgan Twp	Jefferson Rd	SR 0188	Lippencott Rd	SR 0221	39.926024630	-80.100602700	High Potential

12	Greene	Waynesburg Boro	Greene St	SR 0019	Morgan St	SR 0218	39.895257880	-80.185425970	Low Potential
12	Greene	Waynesburg Boro	High St	SR 0019	Washington St	Local Rd	39.896467560	-80.186915370	Low Potential
12	Greene	Waynesburg Boro	High St	SR 0019	Morgan St	SR 0218 / Local Rd	39.896441280	-80.185376220	Low Potential
12	Greene	Waynesburg Boro	High St	SR 0019	Porter St	SR 1003 / SR 2003	39.896360240	-80.179205210	Low Potential
12	Greene	Waynesburg Boro	High St	SR 0019 / SR 0021	Morris St	SR 0019 / SR 3015	39.896495060	-80.188454530	Low Potential
12	Greene	Carmichaels Boro	Vine St	SR 0088	George St	SR 1021	39.896373320	-79.976273860	Potential
12	Greene	Carmichaels Boro	Vine St	SR 0088	Ceylon Rd / Morgantown St	SR 1006 / Local Rd	39.894668700	-79.974699800	Potential
12	Greene	Franklin Twp	Roy E Furman Hwy	SR 0021	Elm Dr	T-684	39.898690330	-80.151783850	Potential
12	Washington	Burgettstown Boro	J L Brunner Memorial BP	SR 0018	Bridge St	SR 4028	40.386534760	-80.388782060	High Potential
12	Washington	Cecil Twp	Southpoint Blvd / Old Morganza Rd	SR 1032 / T-855	Morganza Rd	SR 1009	40.295722910	-80.158517980	High Potential
12	Washington	North Strabane Twp	Houston Rd / From US 19	SR 0519 / Local Road	Hill Church Rd / Washington Rd	SR 0519 / SR 0980	40.242451540	-80.181067250	High Potential
12	Washington	Somerset Twp	Brownlee Rd	SR 1055	Main St	SR 0136	40.181172810	-80.098381330	High Potential
12	Washington	South Strabane Twp	Washington Rd	SR 0019	Racetrack Rd / Burkett Ln	SR 1041 / Local Rd	40.211702060	-80.196070910	High Potential
12	Washington	South Strabane Twp	Washington Rd	SR 0019	Trinity Pl / Strabane Sq	Private Dwy	40.186362330	-80.223024050	High Potential
12	Washington	South Strabane Twp	Beau St	SR 0136	Lakeview Dr / Trinity Pt	SR 1014 / Local Road	40.180408810	-80.222575920	High Potential
12	Washington	Beallsville Boro	Main St	SR 0040	Maiden St	SR 2041	40.065379610	-80.023557840	Low Potential
12	Washington	Cannonsburg Boro	Pike St	SR 0980 / SR 1009	Central Ave	SR 0980 / SR 1027	40.258828240	-80.186495960	Low Potential
12	Washington	Canton Twp	Chestnut St Et	SR 0040	Jack St	Local Road	40.163141630	-80.284718500	Low Potential
12	Washington	Canton Twp	Jefferson Ave	SR 0844	Hewitt Ave	SR 4024 / T-582	40.192961740	-80.288075310	Low Potential
12	Washington	Chartiers Twp	Race Track Rd / Allison Hollow Rd	SR 1041 / T-641	Pike St	SR 1009	40.223447500	-80.218228490	Low Potential
12	Washington	Monongahela City	Main St	SR 0088	Park Av / First St	SR 0481 / Local Road	40.200071640	-79.922590310	Low Potential
12	Washington	Monongahela City	Main St	SR 0088	4th St	SR 1018	40.203193270	-79.926277560	Low Potential
12	Washington	North Strabane Twp	Washington Rd	SR 0019	Demar Blvd / N Strabane Ct	T-718 / Private Dwy	40.255079710	-80.163441280	Low Potential
12	Washington	North Strabane Twp	Morganza Rd	SR 1009	Bobby Vinton Blvd	Local Rd	40.262740000	-80.172659600	Low Potential
12	Washington	Peters Twp	Washington Rd	SR 0019	McDowell Ln	T-717	40.269504010	-80.128450660	Low Potential
12	Washington	South Strabane Twp	Washington Rd	SR 0019	Manifold Rd / Cameron Rd	SR 1047 / T-526	40.190049770	-80.213174970	Low Potential
12	Washington	Washington City	Henderson Ave	SR 0018	Allison Ave	Local Rd	40.187228840	-80.267129310	Low Potential
12	Washington	Washington City	Jefferson Ave	SR 0018	Hall Ave	Local Rd	40.173059090	-80.253092970	Low Potential
12	Washington	Cannonsburg Boro	Morganza Rd / Euclid Ave	SR 0980 / SR 1009	Adams Ave	SR 0980 / Local Rd	40.262150960	-80.176966490	Potential
12	Washington	Cannonsburg Boro	Morganza Rd	SR 1009	Weavertown Rd / Cavasina Dr	SR 1025 / Local Rd	40.261776640	-80.175095090	Potential
12	Washington	Carroll Twp	Fisher Heights Rd / Donora Rd	SR 0837 / SR 1073	Donora Hill Rd	SR 0837	40.173558060	-79.884993780	Potential
12	Washington	Cecil Twp	Route 0980	SR 0980	Chartiers Run Rd / Ohare Rd	SR 1007 / T-662	40.283558820	-80.209733910	Potential
12	Washington	Donegal Twp	National Pk	SR 0040	Liberty Rd	SR 3005	40.109392940	-80.508813720	Potential
12	Washington	Long Branch Boro	Elco Hill Rd	SR 2033	Dally Rd	SR 2027	40.088116770	-79.897306370	Potential
12	Washington	Mt Pleasant Twp	Hickory Rd / Main St	SR 0018 / SR 0050	Burgettstown Rd	SR 0018	40.296174920	-80.325318870	Potential
12	Washington	North Bethlehem Twp	National Pk	SR 0040	Chartiers Creek Rd / Brush Run Rd	SR 0519 / SR 2005	40.125629840	-80.136871540	Potential
12	Washington	North Franklin Twp	Chestnut St Et	SR 0040	Franklin Farms Rd / Private Driveway	SR 3013 / Local Road	40.164511410	-80.274122150	Potential
12	Washington	North Strabane Twp	Washington Rd	SR 0019	McClelland Rd / Galley Rd	SR 1023	40.256045700	-80.150733560	Potential
12	Washington	North Strabane Twp	Morganza Rd	SR 1009	McClelland Rd	SR 1023	40.264128480	-80.170975850	Potential
12	Washington	North Strabane Twp	Race Track Rd	SR 1041	Johnson Rd / Tanger Outlets Dr	SR 1039 / Private Dwy	40.221034440	-80.207078100	Potential
12	Washington	North Strabane Twp	Race Track Rd	SR 1041	Meadowlands Blvd	Private Dwy	40.222839900	-80.209349580	Potential
12	Washington	North Strabane Twp	Thomas Rd / Waterdam Rd	SR 1053	Thomas Rd / Taylor Dr	SR 1017 / Local Road	40.248439810	-80.099005720	Potential
12	Washington	Peters Twp	Washington Rd	SR 0019	McMurray Rd	SR 1002	40.273046010	-80.127009800	Potential
12	Washington	Peters Twp	East Mc Murray Rd	SR 1002	Bebout Rd / Thompsonville Rd	SR 1019 / Local Road	40.288566880	-80.076666520	Potential
12	Washington	Peters Twp	Valley Brook Rd	SR 1010	E McMurray Rd	SR 1002	40.278954740	-80.083865330	Potential
12	Washington	Robinson Twp	Old Steubenville Pk	SR 4004	Maple Grove Rd	SR 4026	40.421404290	-80.349327660	Potential
12	Washington	Washington City	Jefferson Ave	SR 0018	Wylie Ave	SR 4022 / Local Rd	40.182148920	-80.264257470	Potential
12	Washington	Washington City	Jefferson Ave	SR 0040	Maiden St	Local Road	40.167416680	-80.248814110	Potential
12	Washington	Washington City	Chestnut St	SR 0040 / SR 1083	Jefferson Ave	SR 0018	40.171576840	-80.251886670	Potential
12	Washington	West Pike Run Twp	Scenic Dr / Laurel Rd	SR 0481 / Local Road	Scenic Dr	SR 0481	40.059079920	-79.968465890	Potential
12	Westmoreland	Allegheny Twp	Leechburg Rd	SR 0056	Serpentine Rd	SR 0356	40.616057270	-79.626838320	High Potential
12	Westmoreland	Allegheny Twp	Leechburgh Rd / Leechburg Hill Rd	SR 0056 / SR 4093	PA War Veterans Memorial Hwy	SR 0056	40.617687110	-79.621037030	High Potential
12	Westmoreland	Allegheny Twp	Route 0356	SR 0356	Orr Ave	SR 4034	40.577178300	-79.593776360	High Potential
12	Westmoreland	Allegheny Twp	Route 0356 / Lavelle Vue Rd	SR 0356 / SR 4054	Route 0356	SR 0356	40.598291320	-79.607654250	High Potential
12	Westmoreland	Delmont Boro	Route 0066 / Freeport St	SR 0066	Pittsburgh St	Local Rd	40.413796590	-79.572386760	High Potential
12	Westmoreland	Derry Twp	4th Ave	SR 0217	Industrial Blvd	SR 1020	40.316219950	-79.327999010	High Potential
12	Westmoreland	Derry Twp	Industrial Blvd / Latrobe Derry Rd	SR 0981 / SR 1020	Old Derry Rd / Latrobe New Alexandria Rd	SR 0981 / SR 1052	40.323885000	-79.372289790	High Potential

12	Westmoreland	Donegal Twp	Chestnut Ridge Rd	SR 0031	Main St / Kings Way	SR 0711 / Local Rd	40.106901970	-79.376212230	High Potential
12	Westmoreland	East Huntingdon Twp	Mt Pleasant Scottdale Rd	SR 0819	Countryside Plaza / Summit Ridge Rd	Private Dwy	40.127535400	-79.548889740	High Potential
12	Westmoreland	Hempfield Twp	Roosevelt Way	SR 0119	Harvey Ave	SR 0819	40.307089970	-79.539111460	High Potential
12	Westmoreland	Hempfield Twp	College Av	SR 0130	Greengate Rd	SR 4002 / Local Road	40.324598690	-79.578004940	High Potential
12	Westmoreland	Hempfield Twp	West Newton St	SR 0136	Baltzer Meyer Pk / Walton Tea Room Rd	SR 3097 / T-686	40.283730890	-79.592120430	High Potential
12	Westmoreland	Hempfield Twp	Center Ave	SR 3093 / SR 3111	Byers Ave	T-678 / Local Rd	40.218594740	-79.609276030	High Potential
12	Westmoreland	Hempfield Twp	Greengate Rd	SR 4002	Radebaugh Rd	SR 4004	40.312049450	-79.579341000	High Potential
12	Westmoreland	Latrobe Boro	Hillview Av	SR 0982	Ligonier St	Local Road	40.300114560	-79.371172770	High Potential
12	Westmoreland	Ligonier Twp	Market St Exit	SR 0711	Menoher Hwy	SR 0271	40.260909540	-79.198034190	High Potential
12	Westmoreland	Loyalhanna Twp	Saltsburg Rd	SR 0286	Avonmore Rd	SR 0981	40.489606890	-79.454430590	High Potential
12	Westmoreland	Murrysville Boro	William Penn Hwy	SR 0022	Trafford Rd / Vincent Hall Rd	SR 4033	40.427073640	-79.698368880	High Potential
12	Westmoreland	New Kensington City	Stevenson Blvd	SR 0056 / SR 0366	7th St	SR 0056 / Local Rd	40.563360030	-79.755526650	High Potential
12	Westmoreland	New Kensington City	Leechburg Rd	SR 4042 / Local Rd	Craigdell Rd	SR 4083 / Local Rd	40.587667370	-79.746608680	High Potential
12	Westmoreland	North Huntingdon Twp	Lincoln Hwy	SR 0030	Rocky Rd / Ronda Ct	Private Dwy	40.317178690	-79.683887680	High Potential
12	Westmoreland	North Huntingdon Twp	Lincoln Wy	SR 3022	Maus Dr / Bethel Rd	Local Road	40.328323820	-79.745519150	High Potential
12	Westmoreland	Penn Twp	Mellon Rd	SR 4026	Claridge Export Rd	SR 4037	40.395517380	-79.622482160	High Potential
12	Westmoreland	Rostraver Twp	Rostraver Rd	SR 0201	Tri County Ln	Private Dwy	40.136961590	-79.842877060	High Potential
12	Westmoreland	Rostraver Twp	Rostraver Rd	SR 0201	Vance Dei Cas Hw	SR 3013	40.142986890	-79.841386900	High Potential
12	Westmoreland	Salem Twp	William Penn Hw	SR 0022	Crabtree Shieldsburg Rd / Operators Way	SR 0119 / Local Road	40.395420380	-79.441969770	High Potential
12	Westmoreland	Seward Boro	Sr 0056 Sh	SR 0056	Second St	SR 0711	40.415910910	-79.019739790	High Potential
12	Westmoreland	South Huntingdon Twp	West Newton Ruffsedale Rd / Mount Pleasant Rd	SR 0031 / SR 0136	Greensburg Pk	SR 0136	40.205133830	-79.753462420	High Potential
12	Westmoreland	Southwest Greensburg Boro	Main St	SR 0119	To US 30 E / Private Dr	SR 8009 / Local Road	40.285419720	-79.547972590	High Potential
12	Westmoreland	Unity Twp	Lincoln Hwy	SR 0030	Mammoth Park Rd	SR 0981	40.284414490	-79.393611650	High Potential
12	Westmoreland	Unity Twp	Lincoln Hwy	SR 0030	Marguerite Rd / Village Dr	Local Rd	40.290406930	-79.464011290	High Potential
12	Westmoreland	Washington Twp	Freeport Rd	SR 0066	Greensburg Rd / Fox Rd	SR 0366 / T-977	40.489363790	-79.598471500	High Potential
12	Westmoreland	Washington Twp	Route 0066 / Leechburg Rd	SR 0066 / SR 0356	Route 0066	SR 0066	40.551861930	-79.588836330	High Potential
12	Westmoreland	Greensburg City	Main St	SR 0066 / SR 0119	Pittsburgh St	SR 0119 / SR 3026	40.302451080	-79.544259370	Low Potential
12	Westmoreland	Greensburg City	Pittsburgh St	SR 0119	Maple Ave	Local Rd	40.302641490	-79.543225700	Low Potential
12	Westmoreland	Greensburg City	Otterman St	SR 0119 / SR 3026	Main St	SR 0066	40.303509810	-79.544585730	Low Potential
12	Westmoreland	Hempfield Twp	Lincoln Hwy	SR 0030	Sheraton Dr / Old Rt 30	SR 1073 / T-398	40.303031360	-79.506262710	Low Potential
12	Westmoreland	Hempfield Twp	Donohoe Rd	SR 1026	Georges Station Rd	SR 1053	40.313508530	-79.490152220	Low Potential
12	Westmoreland	Hempfield Twp	Donohoe Rd	SR 1026	Sheraton Dr	SR 1073	40.304633880	-79.508103560	Low Potential
12	Westmoreland	Ligonier Boro	Market St	SR 0711	Church St	Local Road	40.244038180	-79.236812930	Low Potential
12	Westmoreland	Mount Pleasant Boro	Main St	SR 0031	Church St	SR 0981 / Local Road	40.150296260	-79.545016010	Low Potential
12	Westmoreland	North Huntingdon Twp	Lincoln Hwy	SR 0030	Lincoln Way / Banko Park Rd / Private Dwy	SR 3022 / SR 3049 / Private Dwy	40.331243030	-79.740201540	Low Potential
12	Westmoreland	North Huntingdon Twp	Lincoln Hwy	SR 0030	Colonial Manor Rd	SR 3024	40.340116530	-79.754413490	Low Potential
12	Westmoreland	North Huntingdon Twp	Robinson Station Rd	SR 3049	Robbins Station Rd	SR 3047	40.327924820	-79.737522970	Low Potential
12	Westmoreland	Salem Twp	William Penn Hwy	SR 0022	Cloverleaf Dr / Mark Dr	T-710	40.399021550	-79.579547260	Low Potential
12	Westmoreland	Youngwood Boro	3rd St	SR 0119	Washington Ave	Local Rd	40.242775600	-79.575855490	Low Potential
12	Westmoreland	Youngwood Boro	4th St	SR 0119	Hillis St	Local Rd	40.233145320	-79.583658770	Low Potential
12	Westmoreland	Allegheny Twp	PA War Veterans Memorial Hwy	SR 0056	Hyde Park Rd	SR 4048	40.606078740	-79.604229890	Potential
12	Westmoreland	Derry Twp	William Penn Hwy	SR 0022	New Alexandria Rd	SR 0981	40.398542750	-79.422128960	Potential
12	Westmoreland	Derry Twp	Lincoln Hwy	SR 0030	4th Ave	SR 0217	40.292170750	-79.340983310	Potential
12	Westmoreland	Hempfield Twp	Lincoln Hwy	SR 0030	Tollgate Hill Rd / Greengate Rd	SR 3026 / SR 4002	40.306442110	-79.574962940	Potential
12	Westmoreland	Hempfield Twp	Lincoln Hwy	SR 0030	S Greengate Rd / Greengate Center Dr	SR 3099 / Private Dwy	40.305463070	-79.578282640	Potential
12	Westmoreland	Hempfield Twp	Lincoln Hwy	SR 0030	Hempfield Sq / Hempfield Blvd	Private Dwy	40.305347820	-79.592121080	Potential
12	Westmoreland	Hempfield Twp	Main St	SR 0119	Willow Crossing Rd / Shady Ln	SR 3099 / T-399	40.263732070	-79.564806060	Potential
12	Westmoreland	Irwin Boro	Lincoln Hw	SR 0030	Colony Dr	Local Road	40.322135570	-79.696405230	Potential
12	Westmoreland	Irwin Boro	Lincoln Hwy	SR 0030	Caruthers Ln / Private Dwy	Local Rd / Private Dwy	40.322964470	-79.698457920	Potential
12	Westmoreland	Irwin Boro	Lincoln Hwy	SR 0030	Colony Dr / Ash St	Local Rd	40.322098260	-79.696309430	Potential
12	Westmoreland	Ligonier Twp	Lincoln Hw	SR 0030	W Main St	SR 1046	40.248916880	-79.248848390	Potential
12	Westmoreland	Lower Burrell City	Fifty Six Bp	SR 0056	Wildlife Lodge Rd	SR 4081	40.580087800	-79.711943670	Potential
12	Westmoreland	Murrysville Boro	William Penn Hw	SR 0022	Cline Hollow Rd / Walnut Hollow	Local Road	40.422446970	-79.661621600	Potential
12	Westmoreland	Murrysville Boro	William Penn Hwy	SR 0022	Manor Rd / Mellon Rd	SR 4026	40.404276100	-79.599710270	Potential
12	Westmoreland	New Kensington City	Stevenson Bl / Freeport	SR 0366	Freeport St / Bridge St / Private Dr	Local Road	40.554916780	-79.758817310	Potential
12	Westmoreland	North Huntingdon Twp	Lincoln Hwy	SR 0030	Robbins Station Rd / Center Hwy / Taylor Dr	SR 3047 / SR 4023 / Local Rd	40.329461200	-79.734239040	Potential

12	Westmoreland	North Huntingdon Twp	Lincoln Hwy	SR 0030	Norwin Ave / N Huntingdon Sq	Local Rd / Private Dwy	40.319773870	-79.690366740	Potential
12	Westmoreland	North Huntingdon Twp	Lincoln Hwy	SR 0030	Barnes Lake Rd / Teddy Dr	SR 3020 / Private Dwy	40.318230620	-79.686516430	Potential
12	Westmoreland	North Huntingdon Twp	Barnes Lake Rd	SR 3020	Hahntown Wendel Rd	SR 3063	40.308172990	-79.709720250	Potential
12	Westmoreland	Penn Twp	Route 0130	SR 0130	Walnut St	SR 0993 / Local Rd	40.355106950	-79.651055590	Potential
12	Westmoreland	Rostraver Twp	Route 0051	SR 0051	Fells Church Rd / Gallitin Rd	SR 3109 / T-437	40.197297690	-79.830352560	Potential
12	Westmoreland	Salem Twp	William Penn Hwy	SR 0022	Hollywood Blvd / Salem Plaza	Private Dwy	40.400502640	-79.585564620	Potential
12	Westmoreland	Salem Twp	William Penn Hwy	SR 0022	Five Points Slickville / Forbes Five Point Rd	SR 0819	40.402874180	-79.522747060	Potential
12	Westmoreland	Sewickley Twp	Waltz Mill Rd	SR 3037	Hunker Rd	SR 3014	40.212488230	-79.666001470	Potential
12	Westmoreland	South Greensburg Boro	Main St	SR 0119	Huff Ave	SR 0819 / Local Rd	40.282129720	-79.550160450	Potential
12	Westmoreland	Unity Twp	Lincoln Hwy	SR 0030	Mountain Laurel Plaza / Sharkys Dr	Private Dwy	40.284898200	-79.390062930	Potential
12	Westmoreland	Unity Twp	Lincoln Hwy	SR 0030	Giffin Dr / Latrobe 30 Plaza	T-893 / Private Dwy	40.285670380	-79.384572740	Potential
12	Westmoreland	Washington Twp	Main St	SR 0066	Hancock Ave	SR 4105	40.570690370	-79.574858410	Potential



Regional Roundabout Screening Study

March 2022

