

Regional Broadband & Connectivity Summit

February 16, 2023 – Regional Learning Alliance, Cranberry Township



Regional Broadband & Connectivity Summit

Opening Remarks

Leslie Osche

Chairman, Southwestern Pennsylvania Commission
Chairman, Butler County Board of Commissioners



Regional Broadband & Connectivity Summit

State of the Region

Andy Waple, Deputy Executive Director of Programs, SPC

Regional Perspective

Lance Grable, Director, Beaver County Office of Planning
& Redevelopment

Planning/Surveys

Heidi Norman, Director, Department of Innovation &
Performance City of Pittsburgh

Access & Equity

Mike Belding, Chairman, Greene County Board of
Commissioners

Implementation

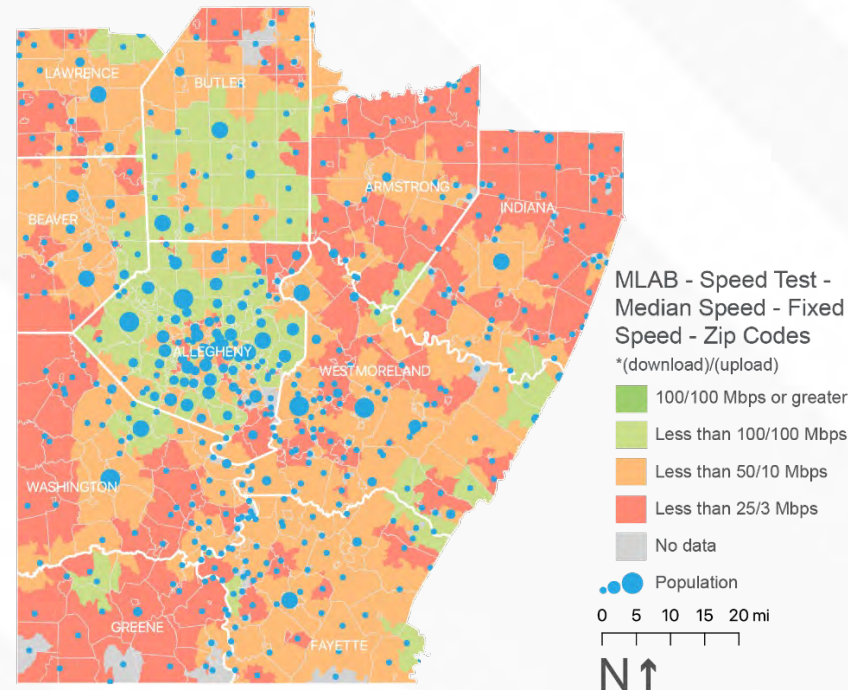
Moderated by **Amy McKinney**
Director of Planning & Community Development
Lawrence County



Current Status of Region

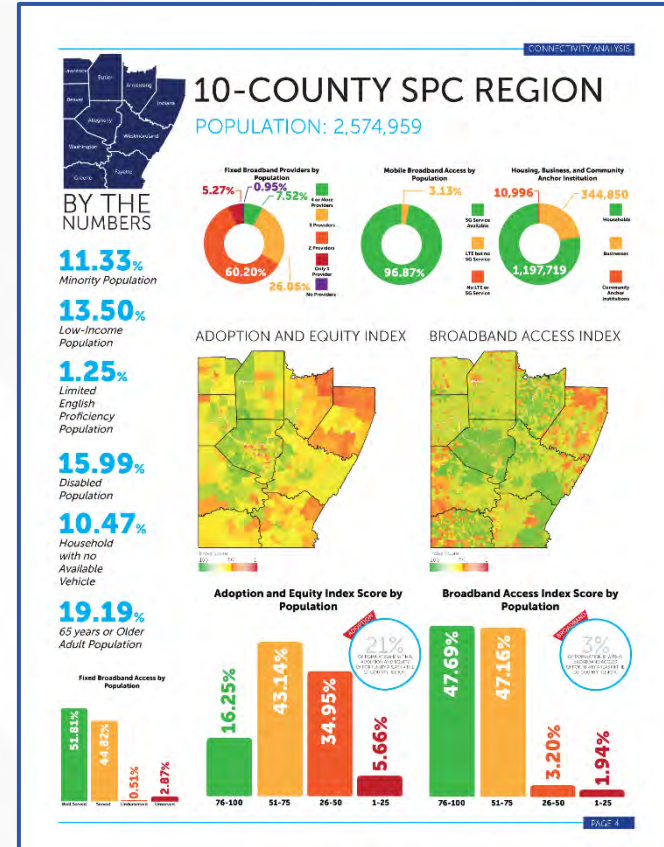
Most of the region has download speeds less than 50 Mbps (underserved) or less than 25 Mbps (unserved).

- To correct for the overstated conditions found in the Form 477 data, the actual measured speeds were mapped for the 10-county region.
- The areas of the region that have access to speeds meeting the 100 Mbps download/100 Mbps upload threshold are too small to be visible on the map.
- Download speeds between 50 and 99 Mbps are more common in Allegheny and Butler counties but are found only in small areas throughout the remaining eight counties.



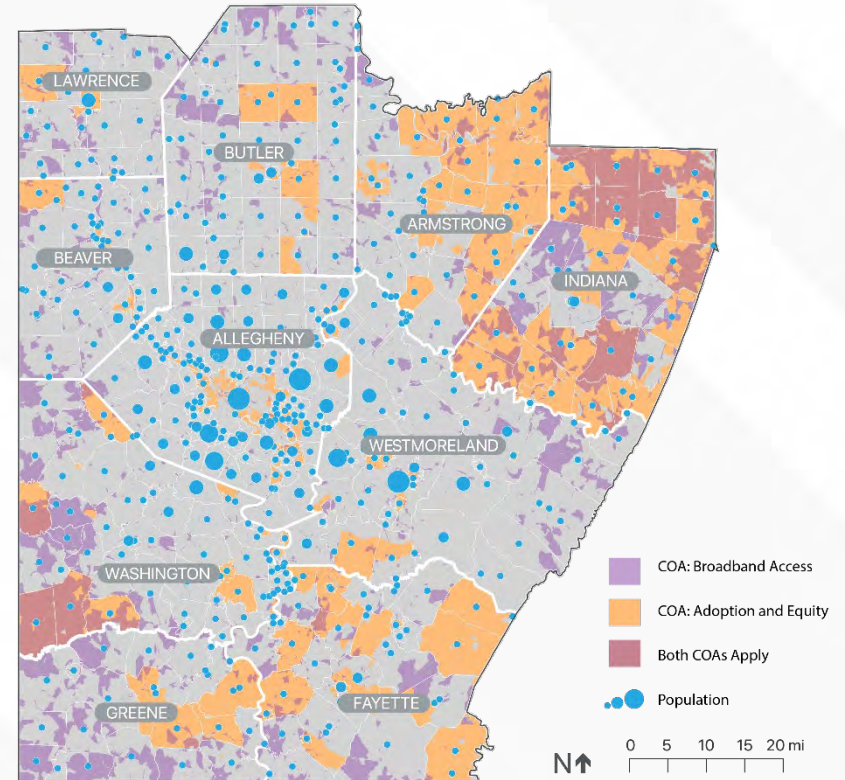
Current Status of Region

- These areas are primarily rural and reveal a large divide in digital access between urban centers and rural towns.
- At least 5% of locations are served by only one provider, which limits options, services, and affordability.
- Additional broadband buildout is occurring in rural areas and mapping will need to be regularly updated to reflect these actions.



Our Approach

- The Connectivity Roadmap conducted an existing conditions analysis, developed two indices to measure existing coverage through the lenses of access and equity, and then identified areas of greatest need and opportunity.
 - The Broadband Access Index
 - The Adoption and Equity Index
- Through identifying and evaluating access based on coverage, speed, and affordability available to rural, suburban, and urban populations in comparison to demographic and socioeconomic conditions, several key areas were identified.



Public Engagement & Feedback



- The overarching themes of the community feedback were:
 - The internet helps people to connect and learn
 - Connectivity is expensive and unreliable for many residents
 - Many people connect to the internet via a mobile device
 - Rural communities feel left behind
 - Connectivity impacts the local economy
 - People connect to the internet where they can and when they can
- Rural vs. Urban (Access vs. Affordability)
- Digital Literacy – The Realm of the Possible



3,445+
Survey
Respondents



5
Workshops



17
Community
Conversations



25+
Interviews

Regional Broadband & Connectivity Summit

State of the Region

Andy Waple, Deputy Executive Director of Programs, SPC

Regional Perspective

Lance Grable, Director, Beaver County Office of Planning
& Redevelopment

Planning/Surveys

Heidi Norman, Director, Department of Innovation &
Performance City of Pittsburgh

Access & Equity

Mike Belding, Chairman, Greene County Board of
Commissioners

Implementation

Moderated by **Amy McKinney**
Director of Planning & Community Development
Lawrence County





SPC Regional Broadband Summit

State of the Region: Access & Equity

Heidi Norman, CIO & Director
Dept. of Innovation & Performance
City of Pittsburgh
February 16, 2023

Digital Access in the Urban Environment

According to the latest available release of American Community Survey data:

- **86.5% of households in Pittsburgh have a broadband subscription;**
 - 2020 Census Pittsburgh population = 303,000
 - **41,000 city residents do not have broadband subscriptions**
 - 2020 Census shows [17 PA counties](#) have total populations less than 41k, but the bulk of the funding is for locations with no access at all, thus excluding urban centers due to "overbuild" restrictions. *Why is that a problem?*

The FCC ... across Pittsburgh, however:

- It is ... ed and
- oper ... ket.
- This ... e access at
- afford ...
- Ther ... ee-market
- syste ... g changes.

How can we work together to support economic opportunities for residents, local companies and the workforce by going beyond mere access and toward choice in the ISP market?



Digital Equity Everywhere

Digital equity goes beyond immediate access to broadband internet to identify and address significant gaps in:

1. Information for residents to know what ISP services are available and guidance on how to secure ISP services at a price point they can afford;
2. Digital skills to safely and securely use the internet for residents' needs;
3. Access to a computing device that meets the needs of the end-users;
4. Accessible technical support when technology breaks.

Cit
to
on

How can we fundamentally change the equation to *close* these gaps in digital equity once and for all and sustain the most effective programs for current and future generations?

ns
ing



Recommendation for Municipal Broadband

Don't count out local government and cooperatives in Pennsylvania.

- Last fall the NTIA clarified that states will need to certify whether they are waiving their anti-muni laws which effectively prevent local governments and cooperatives from providing ISP services in their communities.
- [Broadband Now published a report](#) in October 2022 which shows that every state surrounding PA had lifted any legal restrictions they may have had to municipal broadband. WV, MD, NJ, DE, NY.
- Pennsylvania is not a state for residents to compete for jobs.
- The federal government is not going to be competitive in the long run.

How can we catapult Pennsylvania to be the *most competitive* state in the region for economic opportunities related to Broadband expansion?



Sustainable Broadband for PA

Core principles for planning sustainable broadband infrastructure:

1. **Collaboration:** funded IT infrastructure plans should share resources such as rights of way and conduit across networks to serve more people cost-effectively.
2. **Free Market:** encourage competitors in all markets to ensure competition and innovation.
3. **Open Access:** ensure that networks require open access to all users.
4. **Beneficial:** ensure that broadband service is available to all citizens regardless of ability to pay.
5. **Self-Sustaining:** funded IT infrastructure projects should use a business model which ensures networks are maintained and updated to future proof the initial capital investment over decades.

Together, we can innovate to answer these key questions and deliver broadband and economic opportunities for all Pennsylvanians.



Regional Broadband & Connectivity Summit

State of the Region

Andy Waple, Deputy Executive Director of Programs, SPC

Regional Perspective

Lance Grable, Director, Beaver County Office of Planning
& Redevelopment

Planning/Surveys

Heidi Norman, Director, Department of Innovation &
Performance City of Pittsburgh

Access & Equity

Mike Belding, Chairman, Greene County Board of
Commissioners

Implementation

Moderated by **Amy McKinney**
Director of Planning & Community Development
Lawrence County



Greene County Commissioners Broadband Initiatives

Feasibility Study – Dedicated team, Jan 2020

- Subject matter experts inventory of industry assets and capabilities
- Gain access to proprietary information through NDAs
- Recommendations for appropriate technology, speeds, and priorities
- Residents participation in speed surveys
- Request for proposal (RFP) recommendations
- Grant writing, implementation and close-out team
- Industry partners we value and trust
 - Non-disclosure Agreements
- All installation solutions resolved to gig speed fiber-optic cable



CARES Act funding, December 2020

- Request For Proposals (RFP) completed
- 5 Providers in Greene County. 3 Inquired, 1 Responded
- \$1.2 million CARES Act Funding
- \$1.6 million industry partner
- 220 + miles of fiber-optic cable deployed
- 8,300 homes and businesses with gig capability completed



Every day we are striving to make Greene County a better place to live, learn, work and play!

Greene County Commissioners Broadband Initiatives

Appalachian Regional Commission (ARC) Grant, Sept 2021

- \$2.5 million grant
- \$2.7 million industry partner
- Nearly 1,000 homes and businesses
- 92 + miles of fiber-optic cable to be installed
- Engineering and environmental are being finalized
- Federal regulations expand implementation timeline



CNX Foundation Donation, June 2022

- \$1 million foundation grant
- \$ 192,436 industry partner
- 103 homes and businesses
- 31 + miles of fiber-optic cable to be installed
- Targeted Gray, Morris, Richhill Townships addresses that are not covered by any other program
- Ryerson Station State Park
- Engineering and environmental are being finalized
- November 2024 completion date



Every day we are striving to make Greene County a better place to live, learn, work and play!

Regional Broadband & Connectivity Summit

State of the Region

Andy Waple, Deputy Executive Director of Programs, SPC

Regional Perspective

Lance Grable, Director, Beaver County Office of Planning
& Redevelopment

Planning/Surveys

Heidi Norman, Director, Department of Innovation &
Performance City of Pittsburgh

Access & Equity

Mike Belding, Chairman, Greene County Board of
Commissioners

Implementation

Moderated by **Amy McKinney**
Director of Planning & Community Development
Lawrence County



Regional Broadband & Connectivity Summit

Legislative Panel

Representative Nick Pisciotano, 38th District, PA House of Representatives

Todd Eachus, President, Broadband Cable Association of Pennsylvania

Melissa Gates, Government Relations Manager, County Commissioners
Association of Pennsylvania

Moderated by **Jim Penna**, Regional Director External Affairs, AT&T



Regional Broadband & Connectivity Summit

Internet for All Funding Panel

Brandon Carson, Executive Director, PA Department of Community & Economic Development (DCED), Pennsylvania Broadband Development Authority (PBDA)

Robert Fry, General Field Representative for the Rural Utility Service, Telecom Division, United States Department of Agriculture (USDA)

Curtis Hansen, Broadband Program Manager, Appalachian Regional Commission (ARC)

Nicole Ugarte, Federal Program Officer, Pennsylvania, National Telecommunications and Information Administration (NTIA)

Moderated by **John Timney**,

Executive Director, Washington County Authority



Regional Broadband and Connectivity Summit

Internet for All Funding Panel



10 project areas designed and estimated to be 700 miles of new fiber construction



7 different companies submitted broadband proposals



47 proposals submitted including partial projects and super-projects



6,000 residences, small businesses, and schools to be primary focus within Phase III



\$278M value of all of the submitted proposals with no distinction on prioritization or project winners



Proposed Timeline: The **47** submitted broadband proposals will be reviewed and scored in **Q1-2023** with intentions of projects to be awarded **Q2-2023**.



Washington County Authority
PENNSYLVANIA

Regional Broadband & Connectivity Summit

Keynote Address

Anna Read

Senior Officer, Broadband Access Initiative, Pew Charitable Trust

Introduced by Alexandra Taylor, Program Officer, Hillman Family Foundation



Southwestern Pennsylvania Commission Regional Broadband and Connectivity Summit

Lunch Keynote

February 16, 2023

Pew

About Pew

Established in 1948, The Pew Charitable Trusts is a global nongovernmental organization that seeks to improve public policy, inform the public, and invigorate civic life.

The Pew Charitable Trusts' broadband access initiative works with state and federal lawmakers, researchers, and other partners to accelerate the nation's progress to universal, affordable high-speed internet service.

Pew Publications



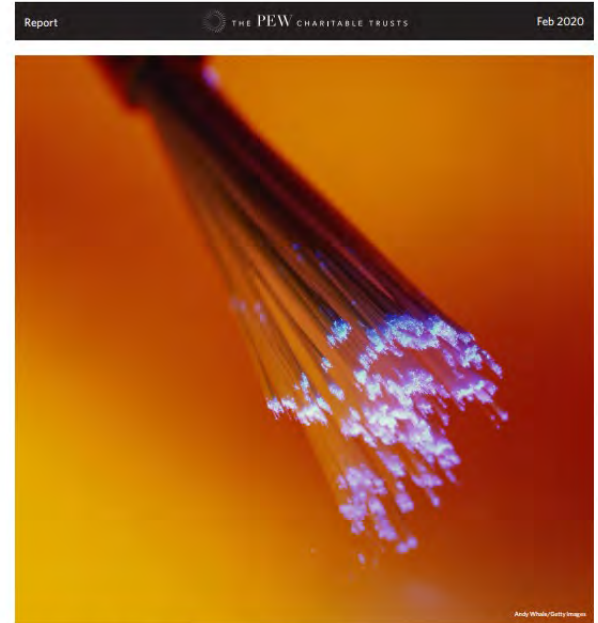
FACT SHEET July 7, 2022

What Are the Key Elements of Broadband Policy?



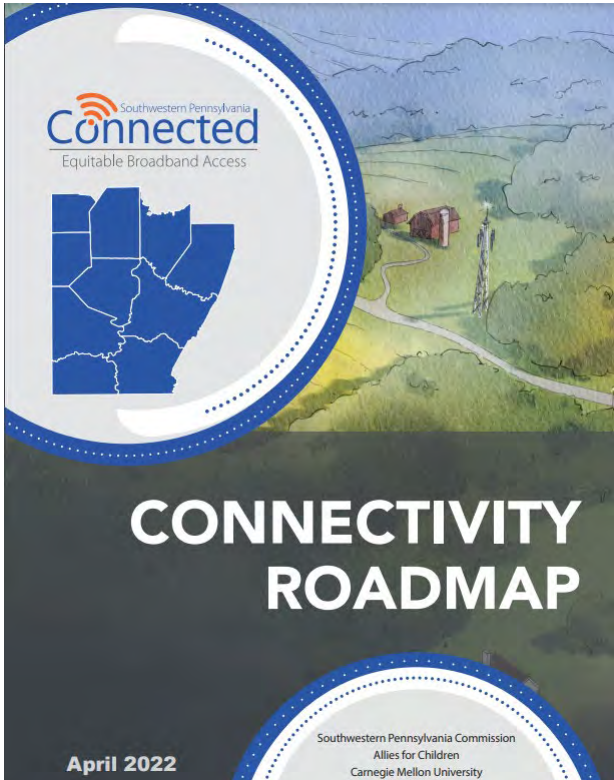
ARTICLE April 29, 2022

How Can the United States Address Broadband Affordability?



How States Are Expanding Broadband Access

New research identifies tactics for connecting unserved communities

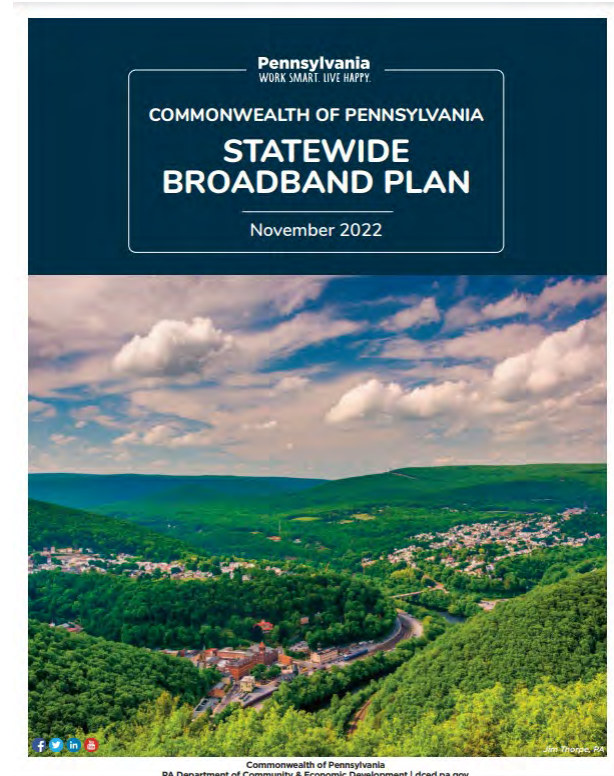


“Broadband is the gateway that allows communities and individuals across the region to access information that is essential to everyday life. Without broadband, it is difficult to participate in society, creating negative impacts on individuals and communities. Rather than viewing high-speed internet as a luxury, it is becoming increasingly clear that broadband needs to be viewed as a necessity, like electricity or water.”

-[Connectivity Roadmap](#)

“For Pennsylvania to succeed, we must close the digital divide, ensuring that every citizen and business has the access to connect to the ever-expanding digital world in which we live and work.”

-[Statewide Broadband Plan](#)



Infrastructure Access



According to the latest data from the Federal Communications Commission's broadband availability map, an [estimated 7.8 million](#) locations nationwide are unserved and an additional **5 million** locations are underserved.

Affordability

Nearly half of households with annual incomes below \$50,000 are “subscription vulnerable” – meaning it is very difficult for them to afford maintaining broadband service – according to a [survey](#) by *Everyone On*.



Affordability

43% of adults in households with incomes below \$30,000 per year lack a home broadband connection.

Table 1

Those With Higher Household Income Are Most Likely to Have Broadband at Home

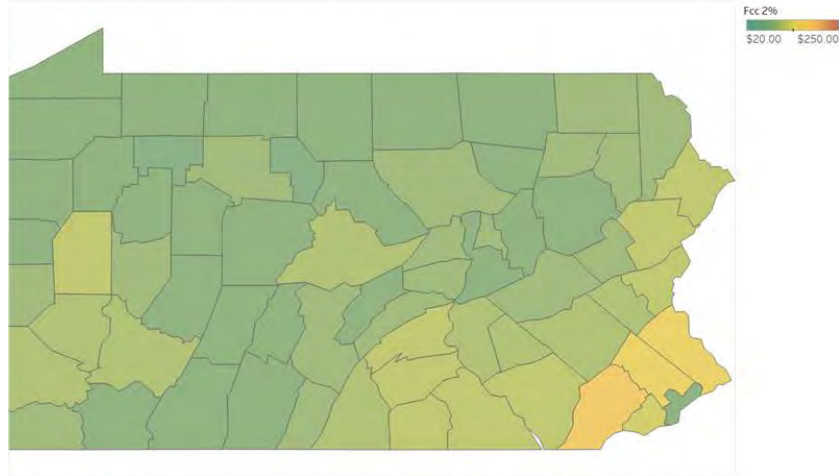
Internet adoption by income level

	Less than \$30,000	\$30,000-\$49,999	\$50,000-\$74,999	\$75,000+
% of U.S. adults who say they use the internet	86%	91%	98%	99%
% of U.S. adults who say they have a broadband connection at home	57%	74%	87%	92%

Source: The Pew Research Center, "Internet/Broadband Fact Sheet," April 7, 2021, <https://www.pewresearch.org/internet/fact-sheet/internet-broadband>

What is affordable for households in the SPC Region?

Pennsylvania FCC 2% Affordability Benchmark



Map based on Longitude (generated) and Latitude (generated). Color shows sum of Fcc 2%. Details are shown for State and County. The view is filtered on Latitude (generated), Longitude (generated) and State. The Latitude (generated) filter keeps non-Null values only. The Longitude (generated) filter keeps non-Null values only. The State filter keeps Pennsylvania.

County

Allegheny	\$103.87
Armstrong	\$89.24
Beaver	\$98.36
Butler	\$121.07
Fayette	\$81.79
Green	\$93.32
Indiana	\$82.12
Lawrence	\$83.47
Washington	\$109.13
Westmoreland	\$102.33

Digital Skills

According to the [National Skills Coalition](#), **almost a third** of workers have few or no digital skills but 38% or more of those workers are in jobs that require moderate to advanced computer usage.



Federal Broadband Funding

Infrastructure Investment and Jobs Act Programs

Broadband Equity, Access, and Deployment Program: A **\$42.45 billion** program created by the Infrastructure Investment and Jobs Act to support broadband planning, network deployment, and adoption efforts. The funding will be allocated to states based on the number of unserved locations, with each state receiving a minimum of \$100 million (Territories will receive a minimum of \$25 million).

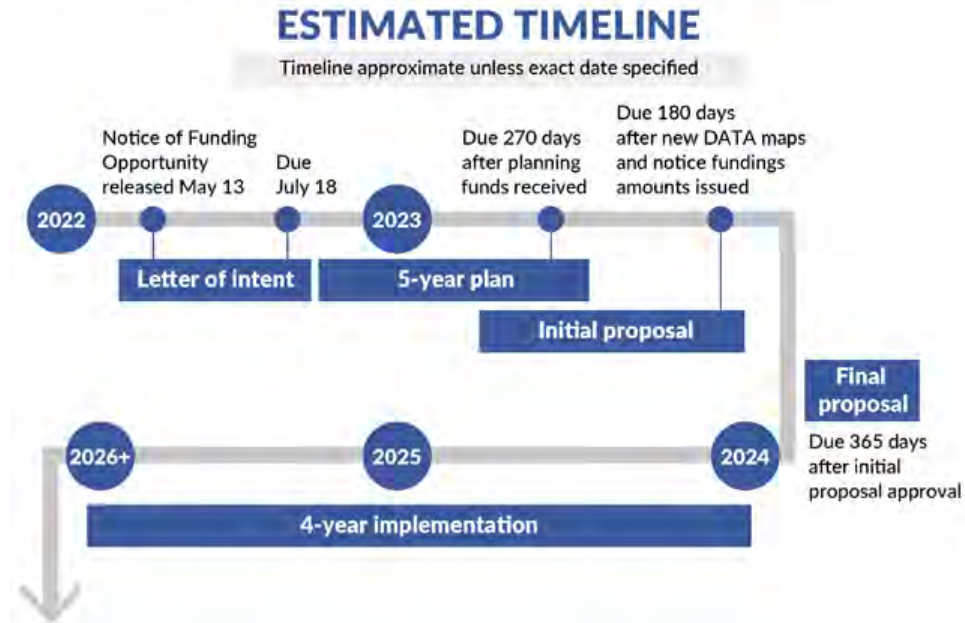
Digital Equity Act Programs: The Infrastructure Investment and Jobs Act allocated **\$2.75 billion** to three digital equity programs: the \$60 million State Digital Equity Planning Grant Program, the \$1.44 billion State Digital Equity Capacity Grant Program, and the \$1.25 billion Digital Equity Competitive Grant Program.

Enabling Middle Mile Broadband Infrastructure Program: A **\$1 billion** program established by the Infrastructure Investment and Jobs Act to fund the buildout of middle mile, to reduce the cost of delivering broadband to unserved and underserved communities. Eligible applicants, which include government entities, Tribal governments, and telecommunications providers, can receive awards between \$5 million to \$100 million under the grant program.

Figure 2

NTIA Expects BEAD Implementation to Take Roughly 4 Years

Estimated timeline for proposal development and funding allocations



Source: National Telecommunications and Information Administration, "The Broadband Equity, Access, and Deployment Program: Program Details for Applicants" (webinar, May 2022), <https://broadbandusa.ntia.doc.gov/sites/default/files/2022-06/June-1-Webinar-Presentation.pdf>

© 2022 The Pew Charitable Trusts

American Rescue Plan Act Programs

Capital Projects Fund: A **\$10 billion** fund created by the American Rescue Plan Act, which provides formula funding to states, territories, and Tribal governments to invest in capital projects, with a priority on broadband.

State and Local Fiscal Recovery Fund: This **\$350 billion** fund created by the American Rescue Plan Act provides funding to state, local, and Tribal governments to address the impacts of the pandemic and “build a strong, resilient, and equitable recovery by making investments that support long-term growth and opportunity.” Investment in broadband infrastructure is an eligible use of funds.

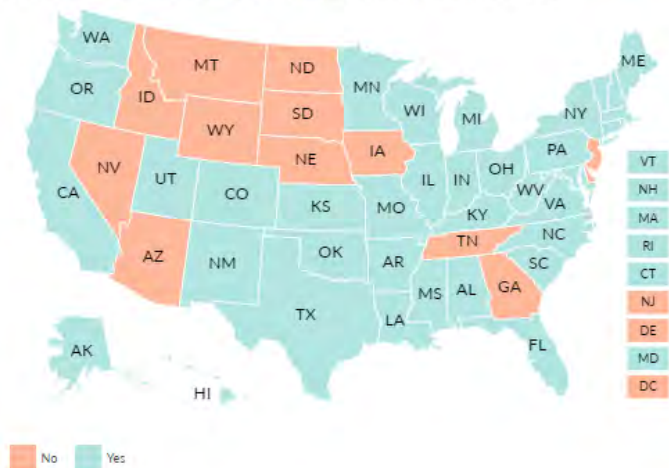
Innovative Practices in States

State Broadband Programs

How Has Your State Designed Its Broadband Program?

Office | Agency | Task force | Fund | ARPA Funding

A 50-state overview of efforts to expand high-speed, reliable internet access



How Has Your State Designed Its Broadband Program?

Office | Agency | Task force | Fund | ARPA Funding

A 50-state overview of efforts to expand high-speed, reliable internet access



New Forms of Partnerships

Virginia Taps Electric Companies to Help Expand Rural Broadband Access

How the state is leveraging electric infrastructure to support key network connections

ISSUE BRIEF | October 11, 2022 | Read time: 10 min

Projects: [Broadband Access](#)

TABLE OF CONTENTS

Read Mode



Vermont Takes a Regional Approach to Rural Broadband Expansion

State leaders promote utility districts to bring high-speed internet to unserved areas

ISSUE BRIEF | January 5, 2023 | Read time: 9 min

Projects: [Broadband Access](#)

TABLE OF CONTENTS

Read Mode



Addressing Specific Challenges

Line Extension Programs: Sometimes referred to as the “last” last mile, line extensions connect unserved homes and businesses to existing broadband infrastructure nearby. States have started supporting line extension programs to extend broadband service to households who would not otherwise be able to afford the necessary infrastructure.

Minnesota Low-Density Pilot Program: Provides up to 75% of the total costs of broadband projects in low-density areas (which are predominantly rural) that would otherwise be exceptionally expensive for internet service providers to serve. Projects must be capable of supporting at least 100/100 Mbps speeds.

Connecting MDUs: Many households living in federally subsidized multifamily housing remain un- or under-connected to broadband service. Several states have allotted portions of their federal pandemic-relief funding available from the CARES Act and ARPA to supporting broadband access in public and multifamily housing.

Supporting Community Efforts

Community Capacity Building: A few states have initiated local efforts to facilitate broadband deployment for residents. Maine's [Connect the Ready](#) program and California's [Rural and Urban Regional Broadband Consortia Grant Account](#) support broadband infrastructure partnerships by providing grants for such projects. West Virginia's [GigReady Incentive Program](#) supports collaborative broadband efforts in two phases: giving technical assistance to program applicants and making grant awards for projects.

Broadband Ready Communities: Next Century Cities highlights several strategies for communities looking to expand broadband access in its [Broadband Ready Toolkit](#). Broadband Ready Community programs enable state policymakers to engage with city and county governments and provide local leaders with a framework to expand broadband.



Regional Broadband & Connectivity Summit

Getting Connected: Digital Equity & Affordability

Itha Cao, Director of Digital Inclusion and Innovation, Neighborhood Allies

Lyle Ishida, Chief, Consumer Affairs and Outreach Division, Federal
Communications Commission (FCC)

Alka Patel, Vice President, Government and External Affairs, Comcast
Keystone Region

Moderated by **Kirsten Compitello**,
National Broadband Digital Equity Director,
Michael Baker International



NEIGHBORHOOD ALLIES

Our North Star goal is to move 100,000 low-income Pittsburghers up the socio-economic ladder by 2033



Digital Inclusion



Centralized Real Estate Accelerator



Social Impact Design



Economic Opportunity



Small Business Development



Black Mental Health

HOW WE HELP:

Digital Inclusion & Innovation

INVESTMENT IN DIGITAL TOOLS & SKILLS

- Beyond the Laptops
- LevelUp412 Program
(volunteers needed!)

DIGITAL INCLUSION CENTERS

- Verizon Community Forward Centers
 - Homewood YMCA
 - Homewood CCAC

COALITION PARTNERSHIPS

- Greater Pittsburgh Digital Inclusion Alliance (GPDIA)
- Pittsburgh Digital Equity Coalition (PDEC)

ACP OUTREACH

- Community Partners
(volunteers needed!)
- Comcast Partnership

Greater Pittsburgh Digital Inclusion Alliance (GPDIA)

WORKGROUPS:

DIGITAL SKILLS

DEVICE ACCESS

AFFORDABLE CONNECTIVITY PROGRAM

- Achieva, Inc.
- Age-Friendly Greater Pittsburgh
- AgeWell at the JCC
- Allegheny County Housing Authority
- Allegheny County Library Association
- Allies for Children
- Carnegie Mellon University
- Coalition of Black Trade Unionists
- Community College of Allegheny County
- Community Internet Solutions
- Computer Reach
- Housing Authority of the City of Pittsburgh
- Jewish Family & Community Services
- Latino Community Center
- Literacy Pittsburgh
- Neighborhood Allies
- Partner4Work
- Pitt Information Technology
- Pittsburgh Technology Council
- Southwestern Veterans Center
- STEM Coding Lab
- The Education Partnership
- United Way of Southwestern PA

Contact Jen Blatz for more info: jennifermblatz@gmail.com

NEIGHBORHOOD **ALLIES**

What is the Affordable Connectivity Program (ACP)?

The ACP is a federally-funded program that helps connect families and households struggling to afford internet service.

Eligible households can receive:

- Up to \$30/month discount for broadband service;
- Up to \$75/month discount for households on qualifying Tribal lands; and
- A one-time discount of up to \$100 for a device (laptop, desktop, tablet, etc.) from a participating provider (household must contribute between \$10-\$50 towards the price)

Who is eligible for the ACP?

A household is eligible if the household income is at or below 200% of the Federal Poverty Guidelines

# People in Household	Monthly Income	Annual Income
1	\$2,430	\$29,160
2	\$3,287	\$39,440
3	\$4,143	\$49,720
4	\$5,000	\$60,000
5	\$5,857	\$70,280
6	\$6,713	\$80,560
7	\$7,570	\$90,840
8	\$8,427	\$101,120

*Add \$5,140 for each person in a household over 8 persons

Who is eligible for the ACP?



A household is eligible if the household income is at or below 200% of the Federal Poverty Guidelines, OR if at least one member of the household participates in one of the following programs:

- Federal Pell Grant recipient (in current award year)
- SNAP
- Medicaid
- Federal Public Housing Assistance
WIC
- Supplemental Security Income (SSI)
- Veterans Pension or Survivor Benefits
- Free or Reduced School Lunch
- Lifeline Benefit

ACP Enrollment and Outreach

- 2-Step Enrollment Process
 - Registering on National Verifier
 - Applying approved application ID to internet account
- Outreach and Enrollment events:
 - Pitt Help Desk
 - Pitt CECs
 - Homewood YMCA
 - United Way Free Tax Prep Sites

Check out these [quick FAQs](#) on the ACP program at: beyondthelaptops.org

*Add \$5,140 for each person in a household over 8 persons

NEIGHBORHOOD ALLIES

Thank you!

Itha Cao: itha@neighborhoodallies.org

Beyondthelaptops.org

Neighborhoodallies.org



Regional Broadband & Connectivity Summit

Getting Connected: Digital Equity & Affordability

Itha Cao, Director of Digital Inclusion and Innovation, Neighborhood Allies

Lyle Ishida, Chief, Consumer Affairs and Outreach Division, Federal
Communications Commission (FCC)

Alka Patel, Vice President, Government and External Affairs, Comcast
Keystone Region

Moderated by **Kirsten Compitello**,
National Broadband Digital Equity Director,
Michael Baker International





COMCAST



Advancing digital equity has been core to our company's DNA for more than a decade, and it's an issue we've recommitted to during this critical time. Our mission is to create a more connected and equitable society. That begins with ensuring that every student—and adult—has access to the training and education resources they need to build a brighter future.

— BRIAN L. ROBERTS



Our Impact Over More than a Decade

10M

Low-income Americans connected to Internet Essentials cumulatively since the launch of the program in 2011

80%

Of Internet Essential customers did not have broadband Internet prior to signing up for the program



41%



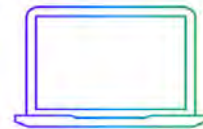
Of Internet Essentials customers say that without Internet Essentials they would only have an Internet connection over their mobile phone and...

23%



Say they wouldn't have Internet at all

200k



Devices subsidized or donated since 2011, including...

35k

Laptops Donated

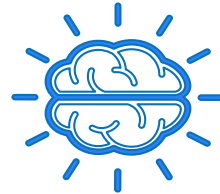
During the pandemic alone

How the Digital Navigator has Helped



Overcame adoption barriers

66% now have an internet connection or a computer or tablet at home



Strengthened digital skills

86% have used more technology, including for jobs, health care, and benefits



Improved digital comfort

80% feel more confident or safer using technology

Regional Broadband & Connectivity Summit

Getting Connected: Digital Equity & Affordability

Itha Cao, Director of Digital Inclusion and Innovation, Neighborhood Allies

Lyle Ishida, Chief, Consumer Affairs and Outreach Division, Federal
Communications Commission (FCC)

Alka Patel, Vice President, Government and External Affairs, Comcast
Keystone Region

Moderated by **Kirstin Compitello**,
National Broadband Digital Equity Director,
Michael Baker International



Regional Broadband & Connectivity Summit

Pennsylvania Statewide Implementation Plan and Summary of Regional Efforts

Brandon Carson, Executive Director, PA Department of Community &
Economic Development (DCED), Pennsylvania Broadband Development
Authority (PBDA)

Dr. Kyle Kopko, Executive Director, Center for Rural Pennsylvania

Moderated by **Byron Stauffer**, Executive Director, Indiana County Office of
Planning & Development





Southwestern Pennsylvania Commission Broadband Summit

February 16, 2023
Dr. Kyle C. Kopko, Executive Director
Center for Rural Pennsylvania
www.rural.pa.gov



Legislative research agency of the Pennsylvania General Assembly
(Act 16, 1987 & Act 12, 2009)

Center for Rural Pennsylvania

Mandates

- Administer grants to conduct research on rural conditions.
- Maintain a database on rural conditions and needs.

Recent Legislative Hearings:

Youth Mental Health, Broadband Access, Opioid Addiction and Overdose, Rural Health Redesign Center, Utility-Scale Solar Development

Current & Forthcoming Center Reports

Currently on Website

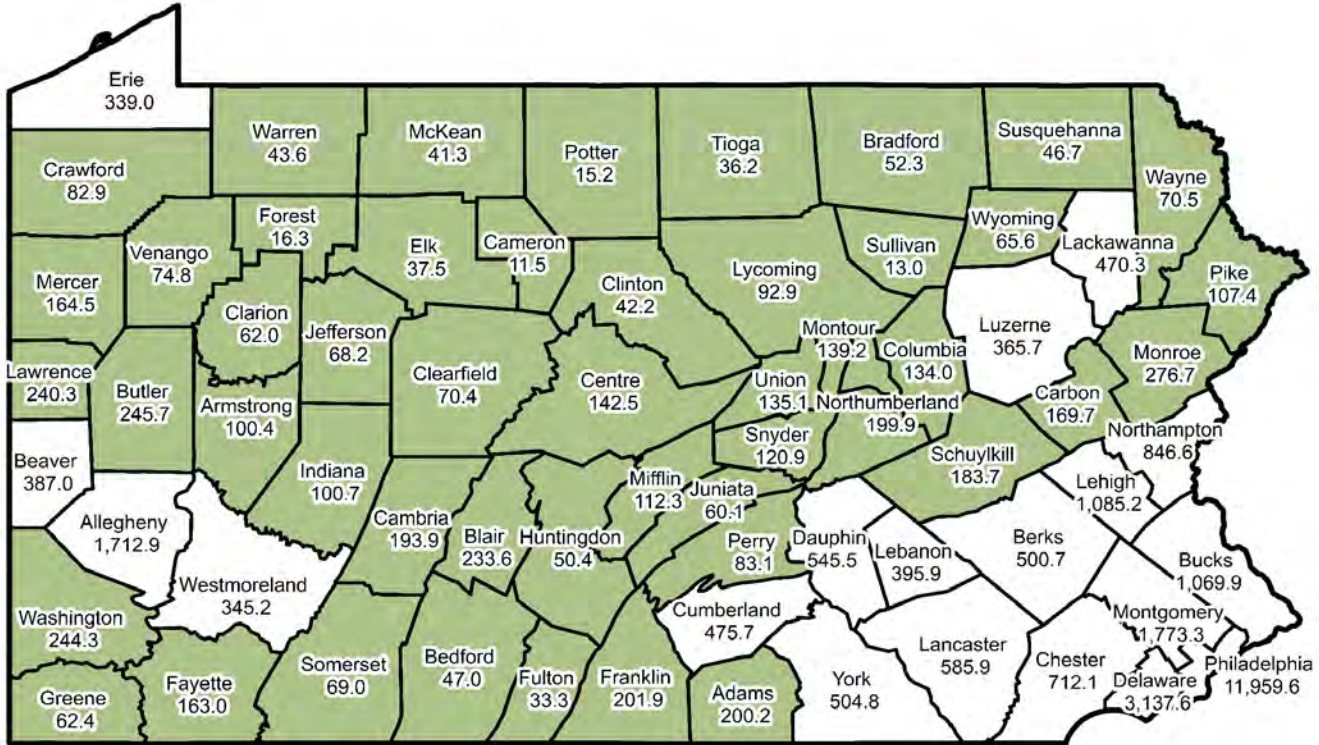
- Social Determinants of Health in the Age of COVID: Effects of Social Isolation Among Adults 62+ in Rural Pennsylvania
- Assessment and Analysis of Housing Quality and Policies in Rural Pennsylvania
- Measuring the Effectiveness of Municipal Land Use Tools
- Effects of COVID and Education Equity
- Access to Rural Mental Health Services
- Coroner/Medical Examiner Services in Pennsylvania

Spring/Summer 2023

- Population projections to 2050
- Reversing population decline in rural Pennsylvania.
- Community college “Promise” programs and alternative tuition strategies



Pennsylvania Rural and Urban Counties, 2020



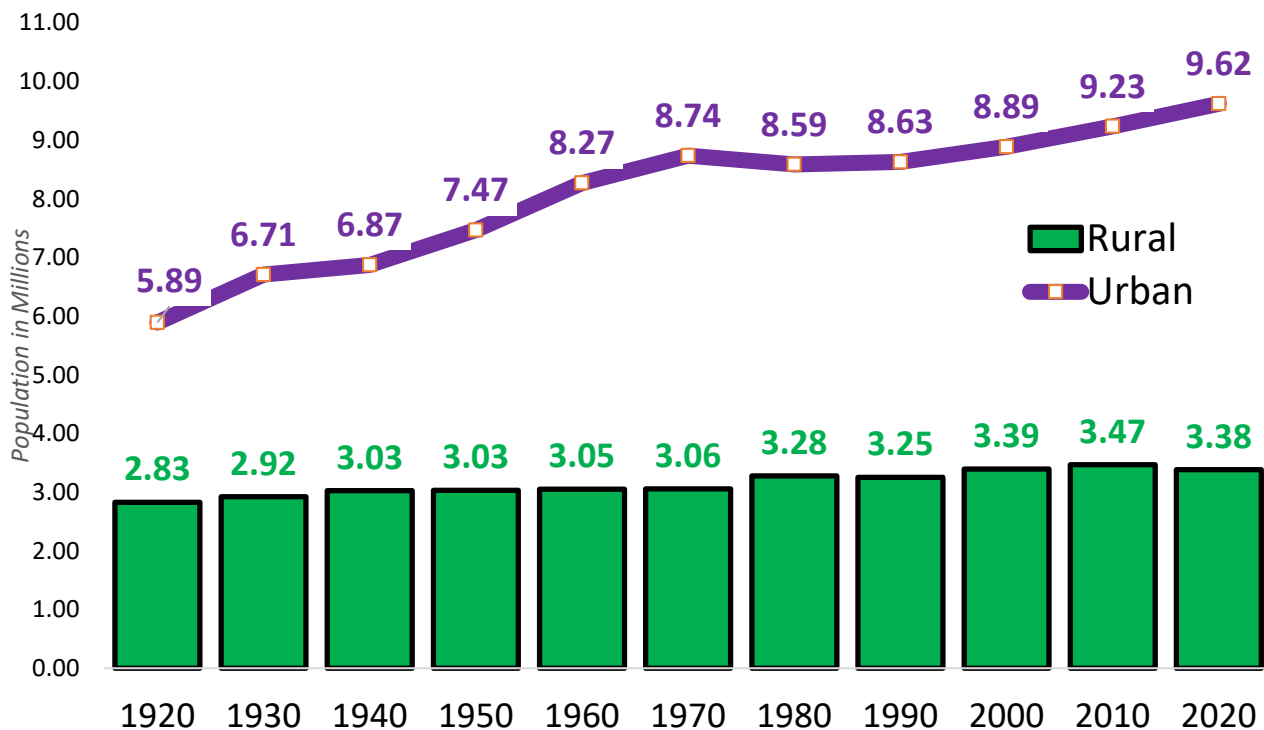
Statewide Population Density = 291 Persons per Square Land Mile, 2020

Data source: U.S. Census Bureau.

- 19 Urban Counties - Population Density At or Above Statewide Rate
- 48 Rural Counties - Population Density Below Statewide Rate

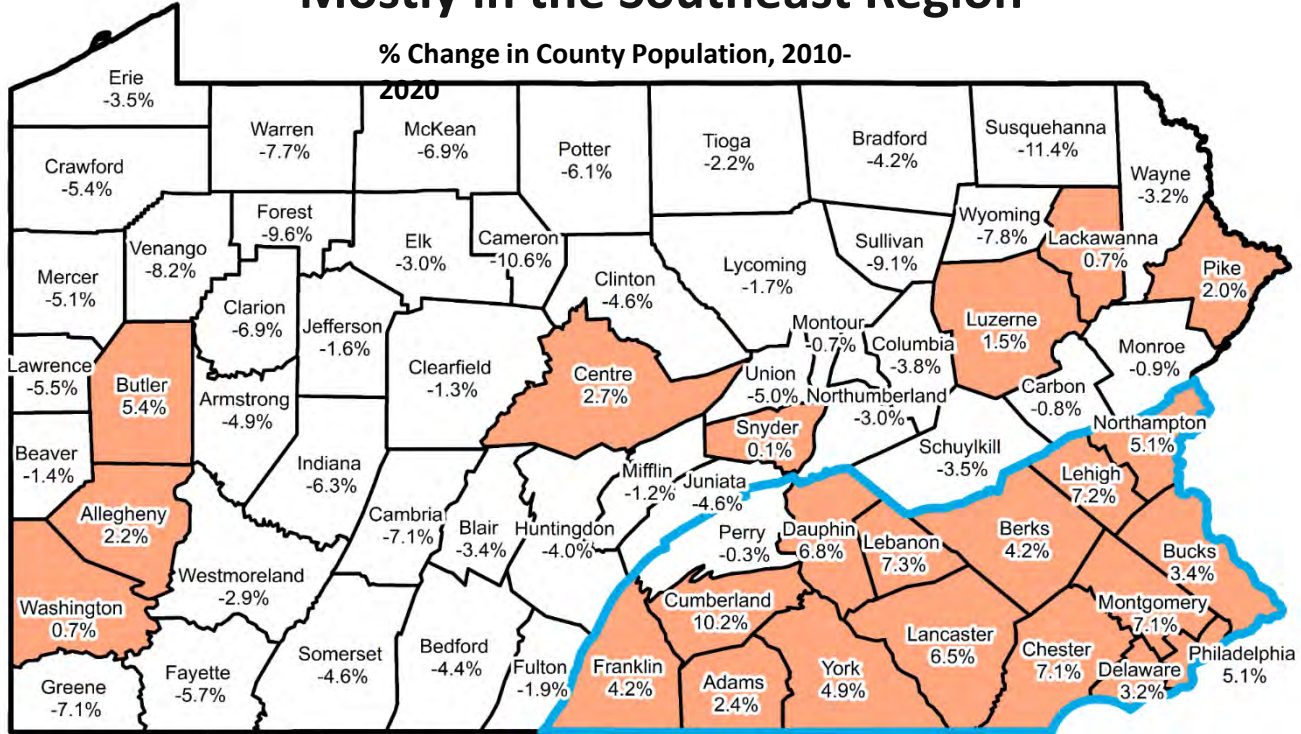
Rural and Urban Pennsylvania Population, 1920 to 2020

(Population in Millions, Current Rural/Urban Definition)



Data sources: Decennial Censuses, U.S. Census Bureau.

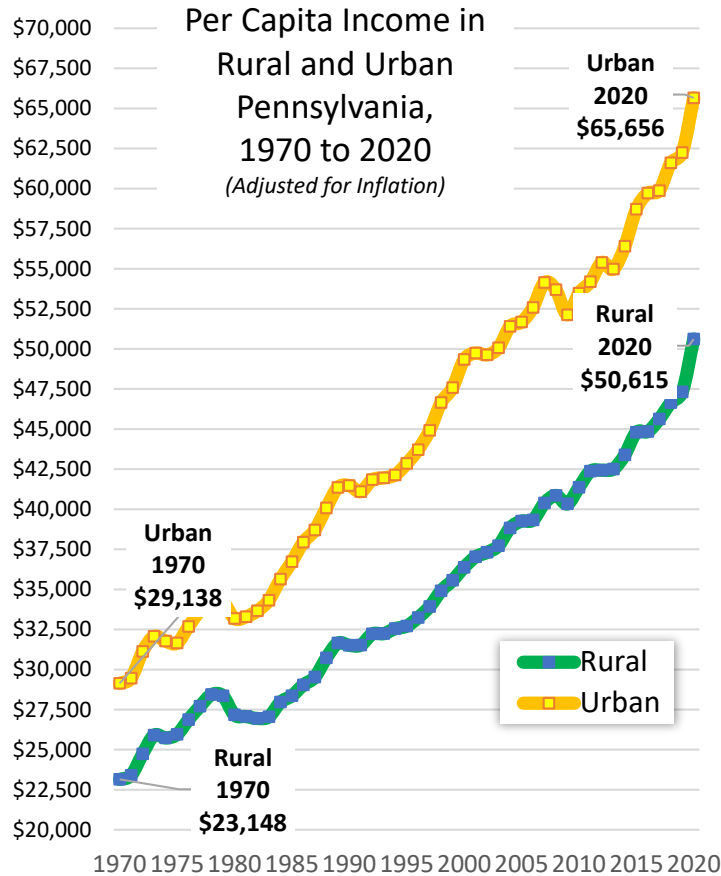
Pennsylvania's Population Growth is Happening Mostly in the Southeast Region



Statewide Population Change, 2010 to 2020 = 2.4%

Data sources: 2010 and 2020 Censuses, U.S. Census Bureau.

- Population Decrease or No Change
- Population Increase
- Southeastern Region

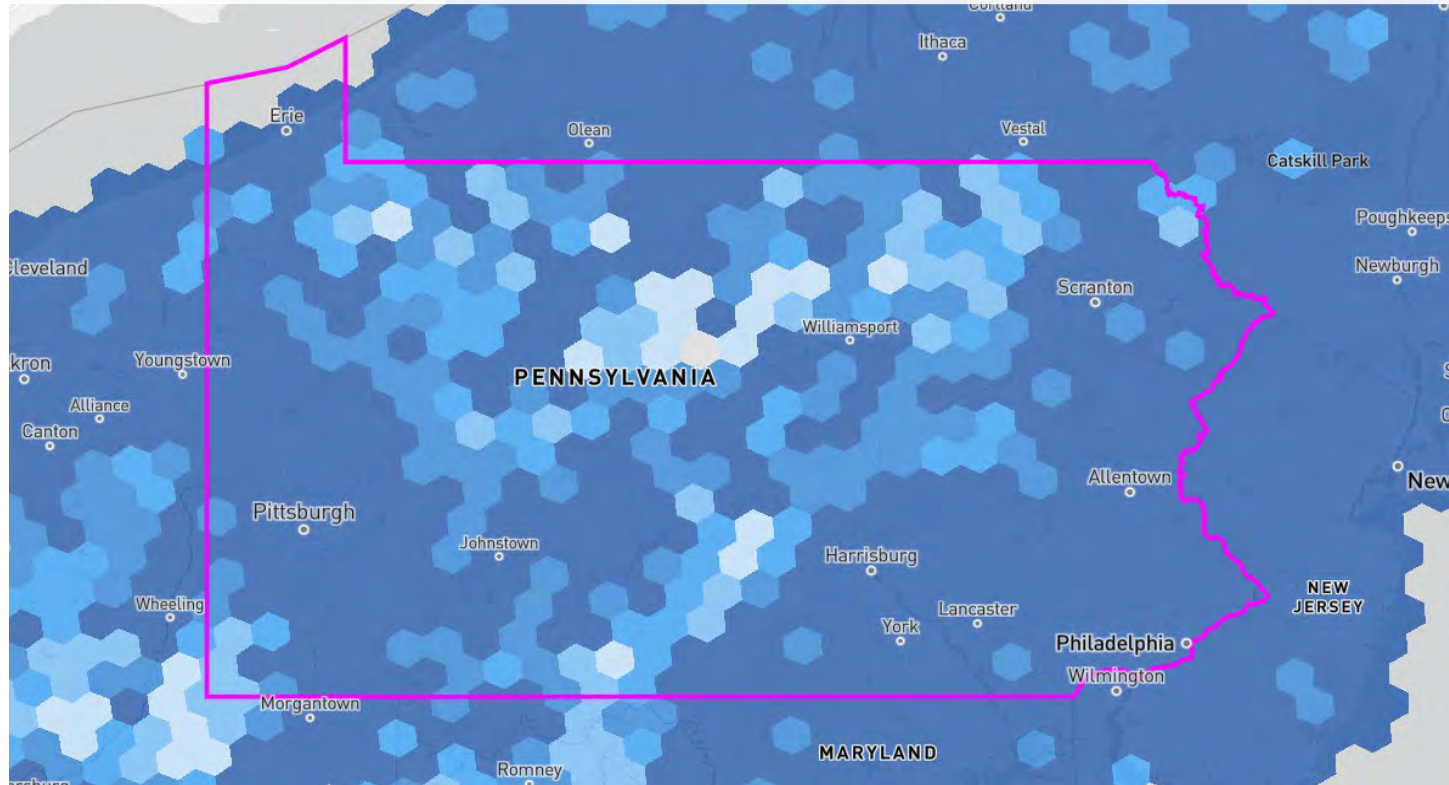


Income in Rural and Urban Pennsylvania

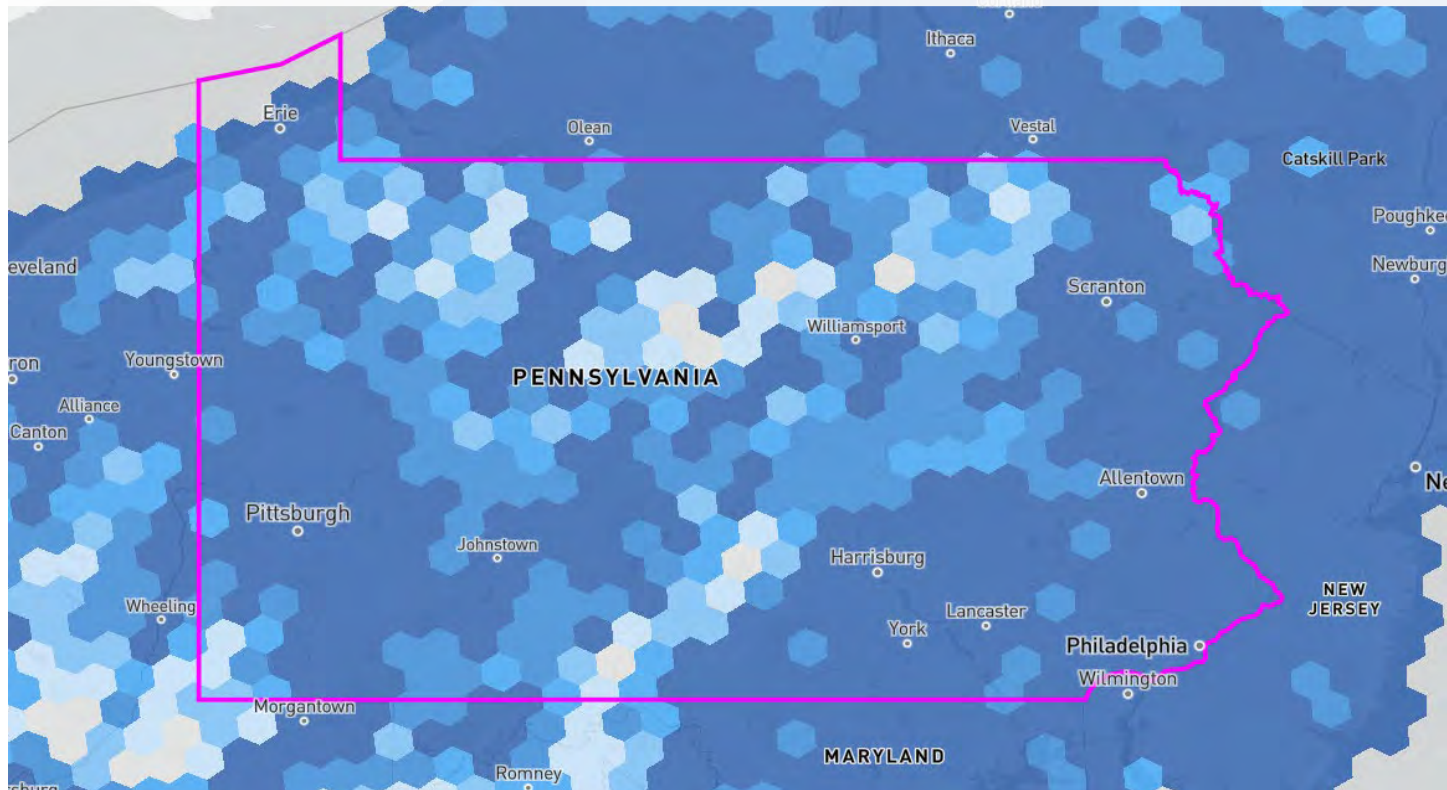
- From 1970 to 2020, the per capita income gap between rural and urban has more than doubled.
- In 2020, 54 percent of rural income came from earned sources (wages and salaries) and 46 percent came from unearned sources (investments, Social Security, pensions, etc.)

Financial data adjusted for inflation using the CPI-U with 2020=100.
Data source: U.S. Bureau of Economic Analysis.

FCC Broadband Map 25/3 Mbps Wired & Licensed Fixed Wireless (Feb. 2023)

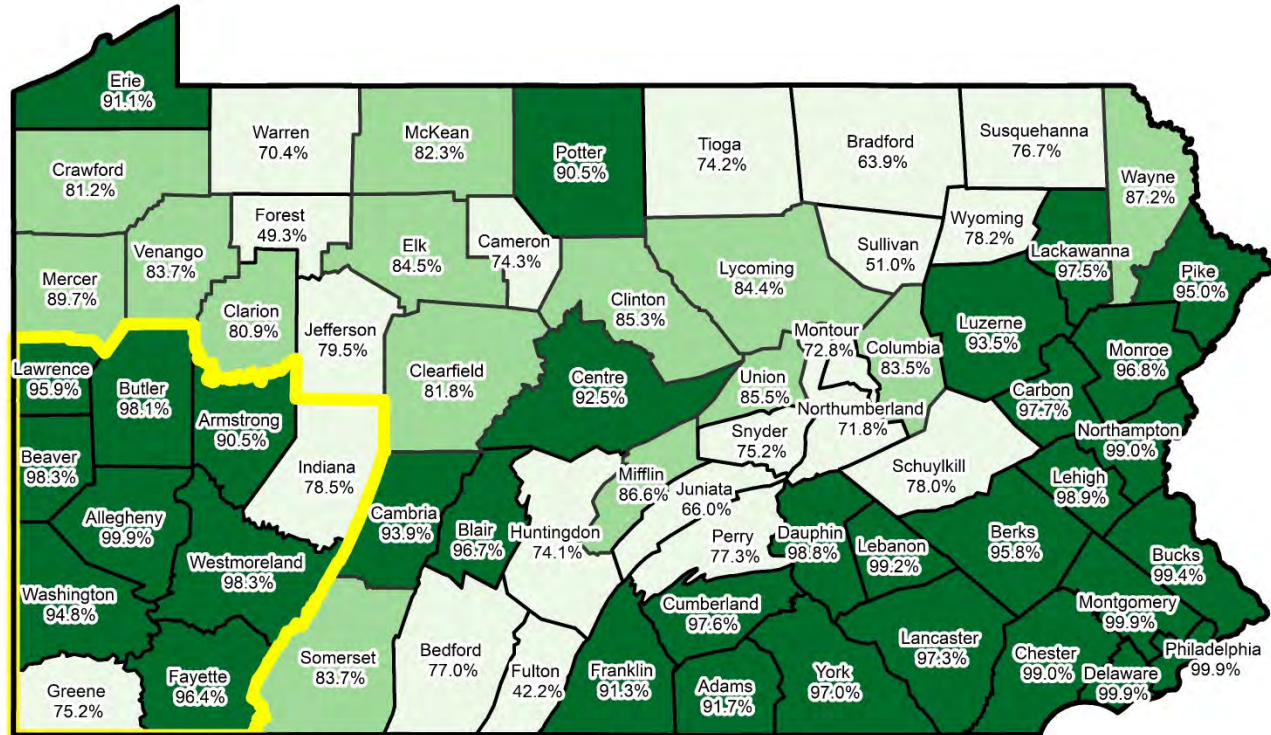


FCC Broadband Map 100/20 Mbps Wired & Licensed Fixed Wireless (Feb. 2023)



Percent of Residential Units with 25/3 Mbps Available

Data source: FCC National Broadband Map Public Data for all wired and licensed fixed wireless technology.
Updated February 1, 2023.

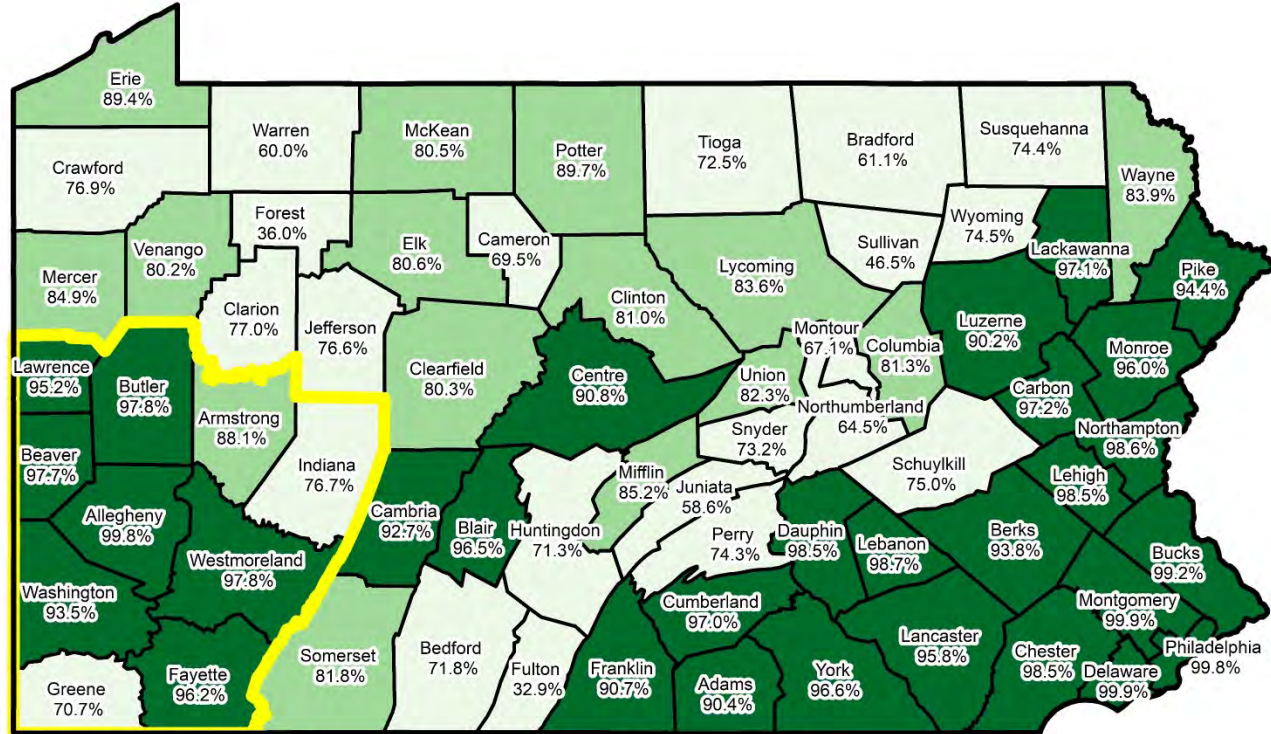


Percent of Units with Access to Speeds of 25/3 Mbps

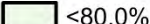
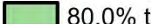
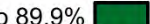
<80.0% 80.0% to 59.9% 90.0%+

Percent of Residential Units with 100/20 Mbps Available

Data source: FCC National Broadband Map Public Data for all wired and licensed fixed wireless technology.
Updated February 1, 2023.



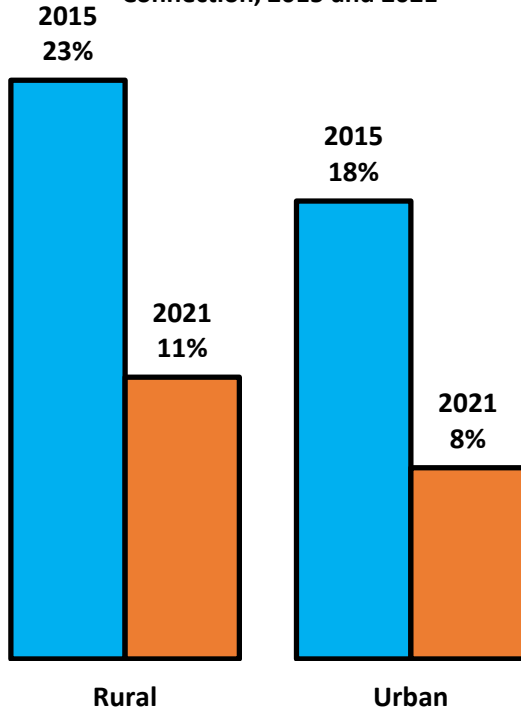
Percent of Units with Access to Speeds of 100/20 Mbps

 <80.0%  80.0% to 89.9%  90.0%+



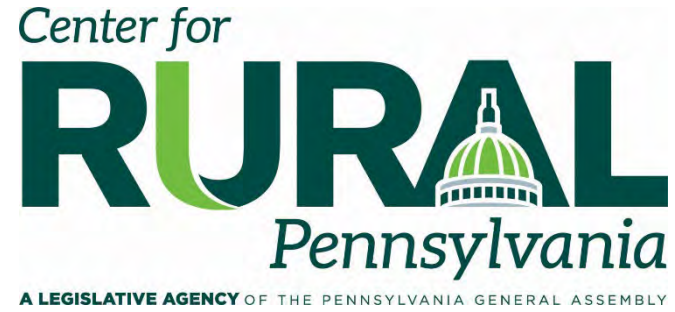
No Home Internet Connection

Percent of Households Without Internet Connection, 2015 and 2021



Data sources: 2015 and 2021, 1-Year Average, American Community Survey, Public Use Microdata Sample, U.S. Census Bureau.

	Rural Households with No Internet Connection, 2021	Urban Households with No Internet Connection, 2021	Households With Internet Connection, 2021
Avg. Age of Householder	69.2	68.7	52.3
Household Income	\$26,984	\$25,233	\$71,155
Poverty Rate	20%	27%	11%
% With Children in Household	8%	7%	27%
% Living Alone	62%	68%	27%
% Householder Person of Color	7%	31%	22%
% Householder with No High School Diploma	23%	23%	6%
% Homeowners	71%	53%	71%
% Householder Not in Labor Force	73%	73%	32%
% No Vehicle Available	23%	38%	8%
% Householder with Disability	40%	38%	16%



Thank You

Dr. Kyle C. Kopko, Executive Director, kkopko@rural.pa.gov

Regional Broadband & Connectivity Summit

Pennsylvania Statewide Implementation Plan and Summary of Regional Efforts

Brandon Carson, Executive Director, PA Department of Community &
Economic Development (DCED), Pennsylvania Broadband Development
Authority (PBDA)

Dr. Kyle Kopko, Executive Director, Center for Rural Pennsylvania

Moderated by **Byron Stauffer**, Executive Director, Indiana County Office of
Planning & Development





pennsylvania

DEPARTMENT OF COMMUNITY
& ECONOMIC DEVELOPMENT

**PENNSYLVANIA BROADBAND
DEVELOPMENT AUTHORITY**

ESTABLISHMENT OF THE AUTHORITY



House Bill 2071 introduced in November 2021



Act 96 signed into law December 22, 2021

Independent agency of DCED

Governed by an 11-member board





STATEWIDE PLAN

STATEWIDE BROADBAND PLAN



Four core challenges facing Pennsylvanians' ability to access or adopt broadband:

1. Broadband Service Infrastructure & Availability
 2. Digital Equity & Affordability
 3. Device & Technology Access
 4. Digital Literacy & Technical Support
- Plan Approved November 2022
 - Framework for BEAD 5-Year Action Plan and Statewide Digital Equity Plan



FORMATION OF SUB-COMMITTEES

AUTHORITY SUB-COMMITTEES

Four sub-committees to inform the Broadband Authority Board, shape policy, programs, and the process:

- **Data & Mapping**
- **Technical**
- **Workforce & Supply Chain**
- **Outreach & Education**





**INFRASTRUCTURE INVESTMENT
AND JOBS ACT (IIJA)
FUNDING OPPORTUNITIES**

IIJA FUNDING OPPORTUNITIES

The Infrastructure Investment and Jobs Act (IIJA) has three main programs to support broadband development

- **Broadband Equity, Access, and Deployment (BEAD)**
- **Digital Equity Act**
- **Middle Mile Infrastructure**

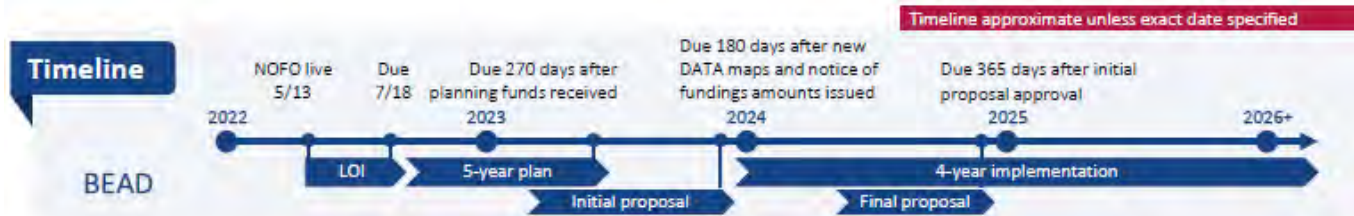


BROADBAND EQUITY, ACCESS, AND DEPLOYMENT (BEAD)

\$42.5B total for the program

- \$5M in planning funds to develop a 5-year action plan
- \$100M minimum guaranteed to PA
 - Remaining funds allocated based on updated FCC maps

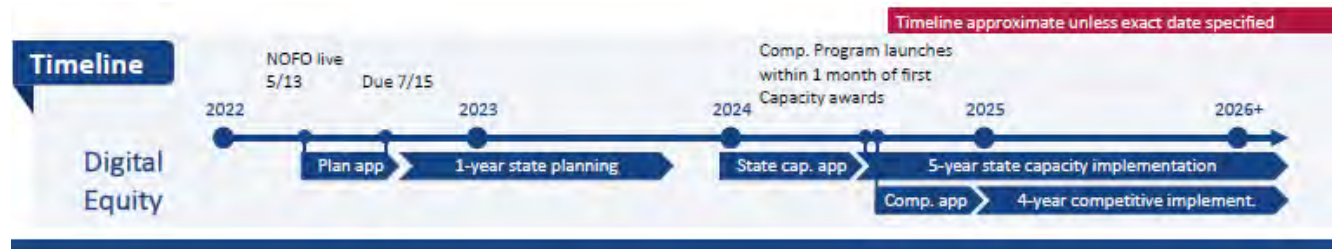
Three-tiered priorities include 25/3, 100/20, and 1 gigabit for community anchor institutions



DIGITAL EQUITY ACT

Three programs within the Act

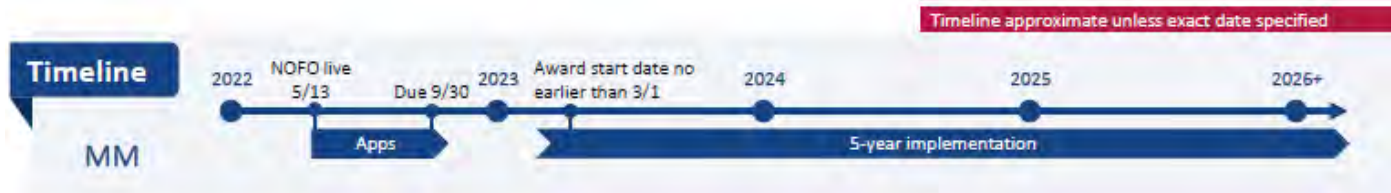
- \$60M formula for states to develop digital equity plan (Pennsylvania to receive \$1.6M in planning funds)
- \$1.44B formula grant for states to implement digital equity plan
- \$1.25B for a competitive program



MIDDLE MILE INFRASTRUCTURE

\$1B for the construction, improvement or acquisition of middle mile infrastructure

- Purpose is to expand and extend middle mile infrastructure to reduce the cost of connecting the unserved and underserved
- Competitive program – closed September 30th





CAPITAL PROJECTS FUND

CAPITAL PROJECTS FUND

Commonwealth grant plans under review at U.S. Treasury

3 components:

1. \$200 million for the Pennsylvania Broadband Infrastructure Program
2. \$45 million for the Digital Anchor Institution Grant Program
3. \$20 million for the Digital Access and Opportunity Grant Program

CAPITAL PROJECTS FUND – BROADBAND INFRASTRUCTURE PROGRAM FEEDBACK

US Treasury has provided flexibility in several areas, to include:

- Matching requirements
- Award amounts
- Definition of affordability
- Challenge period

Public comment period is now open and will be closed on ***Thursday, February 23.***

Organizations and individuals are encouraged to provide feedback to help inform the creation of these guidelines.



TIMELINE & NEXT STEPS

OVERVIEW & NEXT STEPS

Ongoing | Continue building staff capacity of Broadband Office

Feb. 2023 | Launch Digital Equity & BEAD Planning Efforts

Feb. 2023 | Begin implementation of outreach & engagement plan

March 2023 | Release Capital Projects Fund Guidelines

August 2023 | BEAD 5-Year Action Plan Complete

October 2023 | State Digital Equity Plan Complete

2024 to 2027 | 4 Years of BEAD and Digital Equity Implementation

Questions?

Regional Broadband & Connectivity Summit

Pennsylvania Statewide Implementation Plan and Summary of Regional Efforts

Brandon Carson, Executive Director, PA Department of Community &
Economic Development (DCED), Pennsylvania Broadband Development
Authority (PBDA)

Dr. Kyle Kopko, Executive Director, Center for Rural Pennsylvania

Moderated by **Byron Stauffer**, Executive Director, Indiana County Office of
Planning & Development



Regional Broadband & Connectivity Summit

Closing Remarks

Pat Fabian

Vice-Chairman, Southwestern Pennsylvania Commission
Commissioner, Armstrong County Board of Commissioners



Regional Broadband Summit

February 16, 2023 – Regional Learning Alliance, Cranberry Township

