

Southwestern Pennsylvania Commission

June 26, 2023

4 p.m.



Opening Agenda Items

- Agenda Item 1: Call to Order
 - Quorum
 - Conflict of Interest Declarations on Action Items
- Agenda Item 2: Action on Minutes from April 24, 2023 Meeting
- Agenda Item 3: Public Comment

Guest Presentation: Fay-Penn Economic Development Council

Laura Kuhns, Executive Director

Agenda Item: 4



A light gray silhouette of Fayette County, Pennsylvania, serving as a background for the text.

TOGETHER WE ARE

RAISING
THE
REGION

FAY-PENN
Economic Development Council
Fayette County, PA



SOUTHWESTERN PENNSYLVANIA
COMMISSION MEETING

June 26, 2023
Fayette County, PA

MISSION STATEMENT

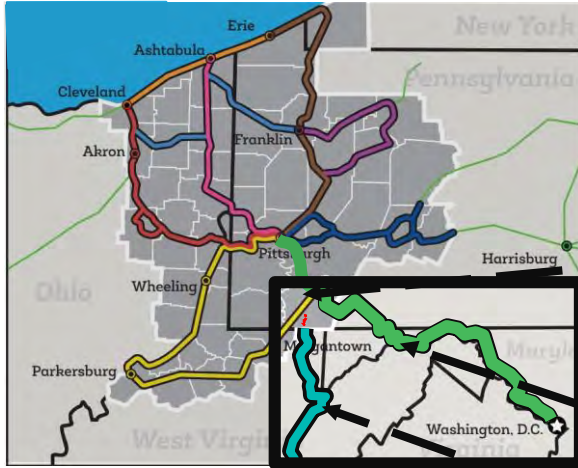


“In pursuit of its charitable, scientific and educational objectives (under 501(c)(3) of the Internal Revenue Code), the purposes of the surviving corporation shall be to stimulate all phases of economic development in Fayette County, to promote industrial development and tourism and recreation, to encourage the improvement of community facilities and services, education and cultural facilities, health services, and housing and transportation (highways, air, rail, and water), to support comprehensive planning and redevelopment and preservation of the environment and natural beauty of the County, and to pursue other activities which will improve the quality of life in Fayette County.”

MAJOR COOPERATION/COLLABORATION PROJECTS



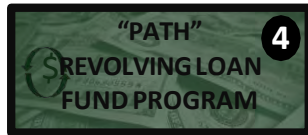
CURRENT MAJOR INITIATIVES - US APPALACHIAN REGIONAL COMMISSION - ARISE GRANT



PARTNERSHIP FOR APPALACHIAN TRAILS AND HERITAGE “PATH” PROJECT COMPONENTS



Project Name	Trail Location
1 Iron Horse Rail Project	GAP/Sheepskin Trail – Connellsville, PA
2 Canal Place River Park Development	GAP Trail – Cumberland, MD
3 Buxton & Landstreet Bldg. Improvements	Blackwater Trail – Thomas, WV
4 “PATH” Revolving Loan Fund Program	All Trail Corridors
5 “PATH” Interactive Mapping System	All Trail Corridors & Sites



\$5 MILLION
(\$2.5 M FOR FAYETTE)

Questions?



Guest Presentation: Republic Food Enterprises

Lyssa Greer, Marketing Manager
Joseph Ambrose, General Manager

Agenda Item: 5



Bridging the Gap from Our Farm to Your Table

Republic Food Enterprise Center (RFEC), located in Republic, PA, serves as a comprehensive center for the development of sustainable food products across Western Pennsylvania. We work to bridge the gap from farm to table.

We respond to the nutritional needs of Western Pennsylvanians by stimulating agricultural production, producing value-added products, distributing local produce, and developing retail outlets within food deserts throughout the region.

RFEC is a social enterprise of Fayette County Community Action Agency and supported by the United States Department of Agriculture (USDA) and the Pennsylvania Department of Agriculture (PDA).



Questions?



Report/Briefing on Responses to the Long-Range Transportation Plan (LRTP)

Dom D'Andrea, Director of Transportation Planning

Agenda Item: 6

Public Comment Period

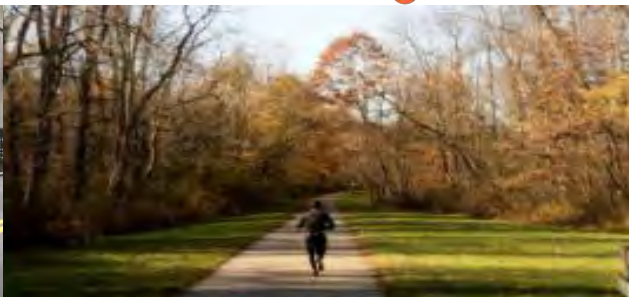
*Environmental Justice
Benefits & Burdens
Assessment*



*Air Quality Conformity
Determination*



Southwestern Pennsylvania Long Range Plan Update June 26, 2023



Presentation Outline

- Development Schedule
- Plan Policies and Strategies
- Public Engagement
- LRTP Investment Review
- Environmental Justice
- Air Quality Conformity
- Progress on Strategies
- Plan Adoption



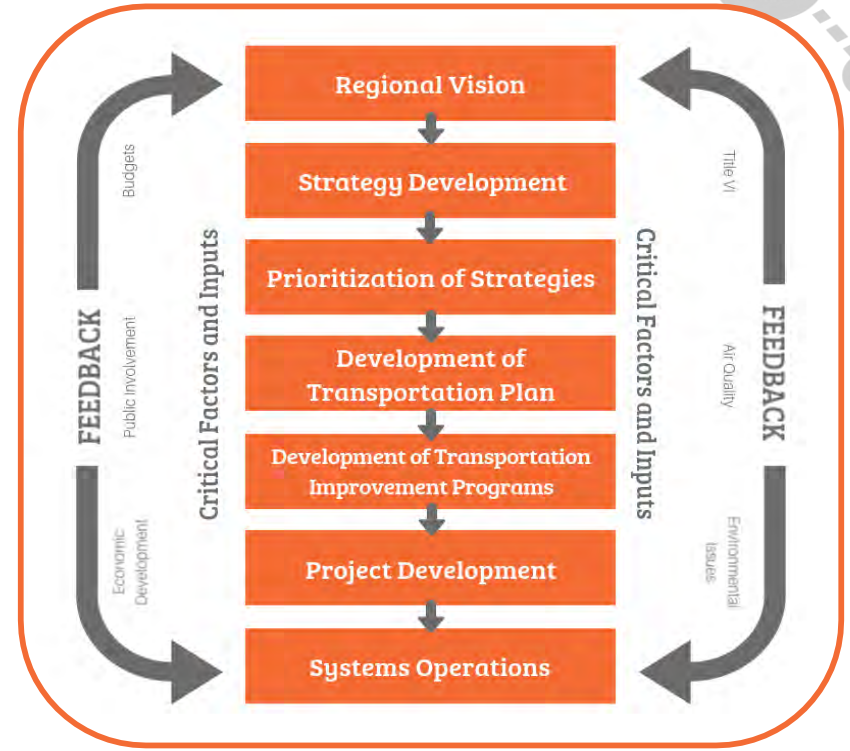
LRP Development Schedule / Milestones

- Policy level review and update of LRP strategies (Fall 2022) **Completed**
- Work Group Meetings (October- February) **Completed**
- Meetings with Transit Operators (October-February) **Completed**
- PPP/Public Meetings (Fall 2022) **Completed**
- TTC/TOC approval of LRTP project lists (March 2023) **Completed**
- SPC Conducts the Environmental Justice Analysis (January-April) **Completed**
- **SPC Conducts AQ Conformity (March-April) Completed**
- **SPC Assembles the LRP Document (March-April) Completed**
- **30-day Public Comment Period and Public Involvement (May-June 2023) Completed**
- LRP Adoption (June 26, 2023)  **We are here**



Transportation Planning Process

- Federal Regulations require MPOs to develop and update a Long Range Transportation Plan.
- The MPO shall review and update the Long Range Transportation Plan at least every 4 years in air quality nonattainment areas.





A world-class, safe, well maintained and connected multimodal transportation system that provides mobility for all, empowers resilient and sustainable communities, and supports a globally competitive economy.



Focus Areas for Investment in the LRTP

- Bridges on the National Highway System (Reconstruction and Preservation)
- Roadways/Freight on the National Highway System (Reconstruction and Preservation)
- Safety on all networks (systematic improvements and specific project locations)
 - Roundabouts
- Other Non-NHS Bridges
- Transit Operations and Facilities
- Efficiency and Operations Projects
- Ped/Bike, Multi-Modal, Air Quality programs
- Local/Off System Bridge funds
- Landslide remediation



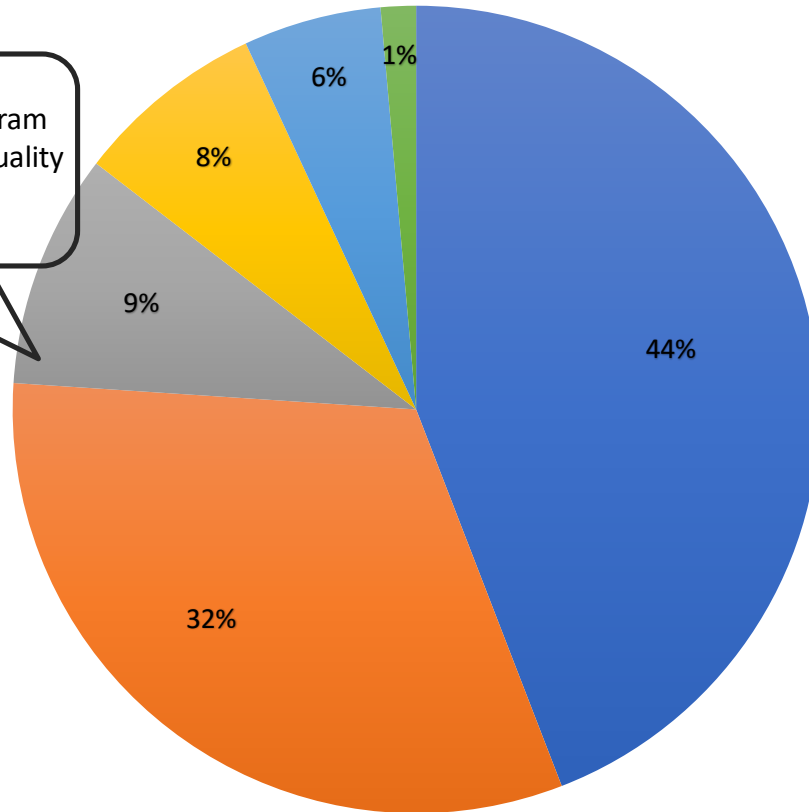
L RTP Highway Bridge Investments

SPC Competitive Programs

Transportation Alternatives Program
Congestion Mitigation and Air Quality
Carbon Reduction Program
Smart Transportation Program

Stage 1 Current TIP:
\$1.9 Billion

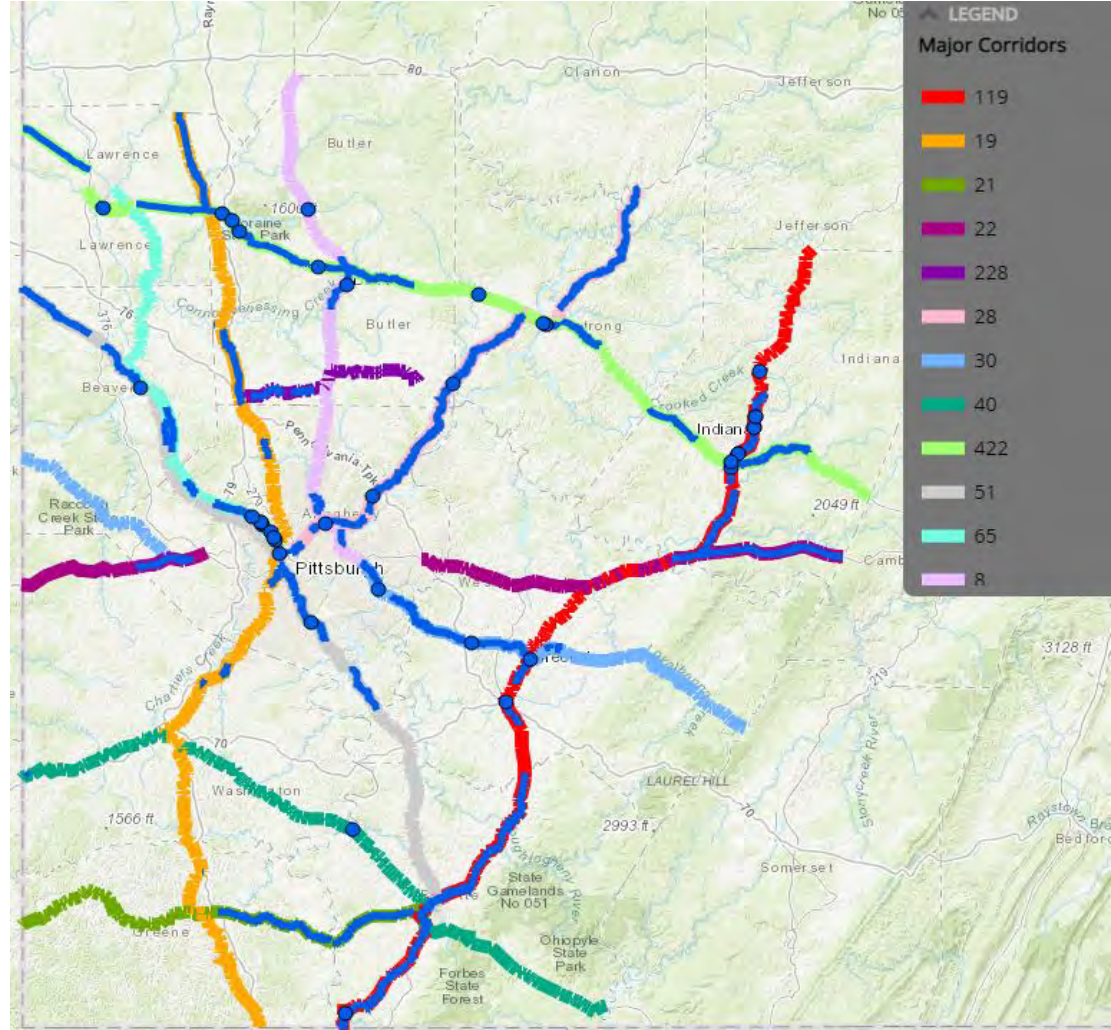
Stage 2 & 3:
\$10.778 Billion



- Bridge Preservation & Reconstruction
- Roadway Preservation & Reconstruction
- Air Quality, Active Transportation & Livability
- Efficiency & Operations
- Safety
- New Capacity

L RTP Investments in Major Corridors

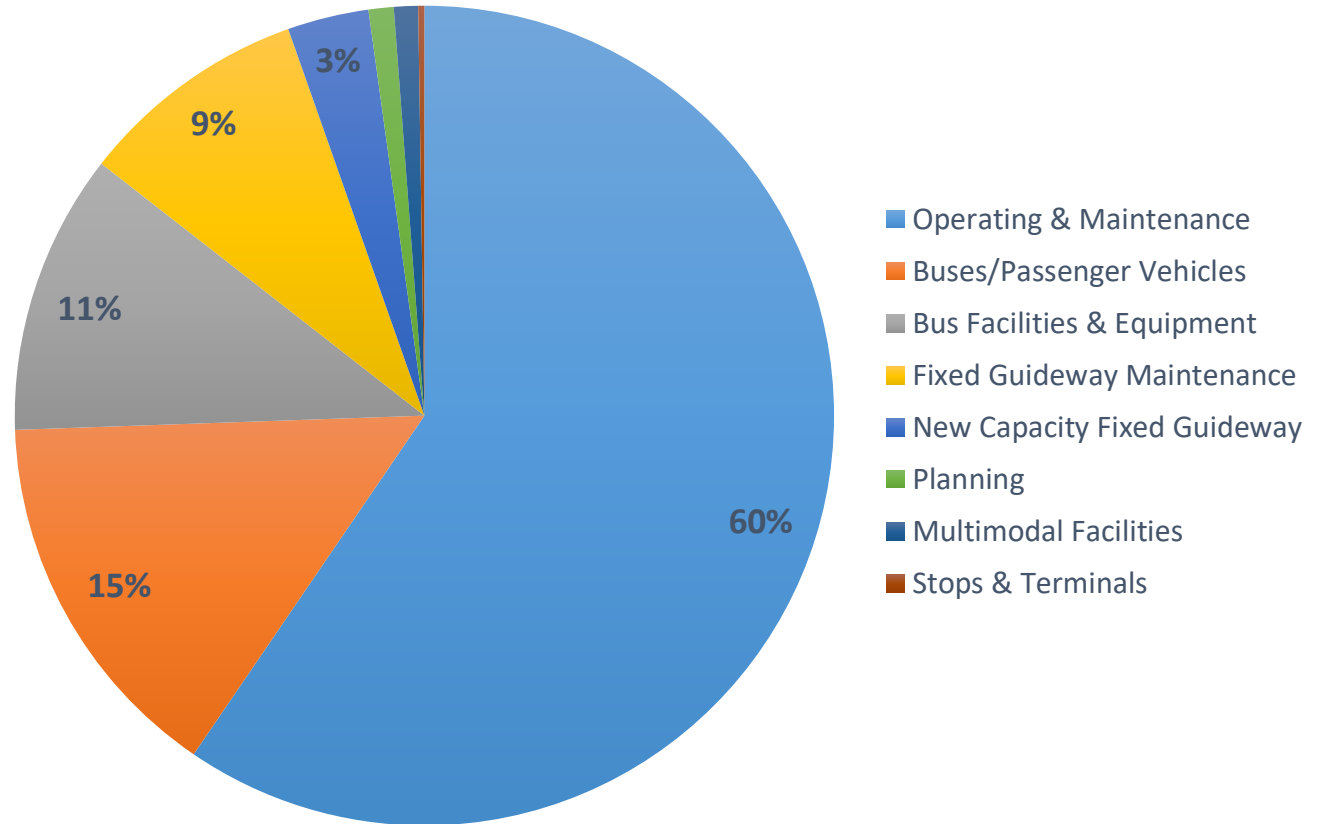
- **State Route 21** (8 Projects)
Estimated Investment: \$183 Million
- **State Route 22** (8 Projects)
Estimated Investment: \$145 Million
- **State Route 28** (19 Projects)
Estimated Total Cost: \$510 Million
- **US Route 30** (11 Projects)
Estimated Investment: \$306 Million
- **State Route 51** (13 Projects)
Estimated Investment: \$218 Million
- **State Route 65**: 15 Projects
Estimated Investment: \$ 362 Million
- **US Route 119** (9 projects)
Estimated Investment: \$590 Million
- **US Route 422** (23 Projects)
Estimated Investment: \$ 531 Million



Transit LRTP Investments

Stage 1 Current TIP:
\$3.259 Billion

Stage 2 & 3:
\$21.6 Billion



NexTransit Investments



Pittsburgh Regional Transit

New Facilities

- PRT needs to expand vehicle storage and maintenance, including adding a new zero-emissions bus garage. SPC's LRTP includes a master plan to look at all of the option as well as a construction project to implement the needs.
- Downtown Transit Center

Extending & Rethinking Existing Transit Corridors

- Library Line Best Use Study & Construction
- Allentown LRT Best Use Study & Construction
- Homestead to McKeesport Upgraded Transit
- East Busway Phased Extensions
- Airport Corridor Rapid Transit

New Corridors

- McKnight Road Upgraded Transit
- Allegheny Valley Rapid Transit
- East Busway to Monroeville Rapid Transit

12 Year Statewide Interstate Program



\$450 Million



\$544 Million



\$400 Million

In addition to the currently programmed projects, a total of \$2.2 billion in unfunded Interstate needs are identified for the region long term.

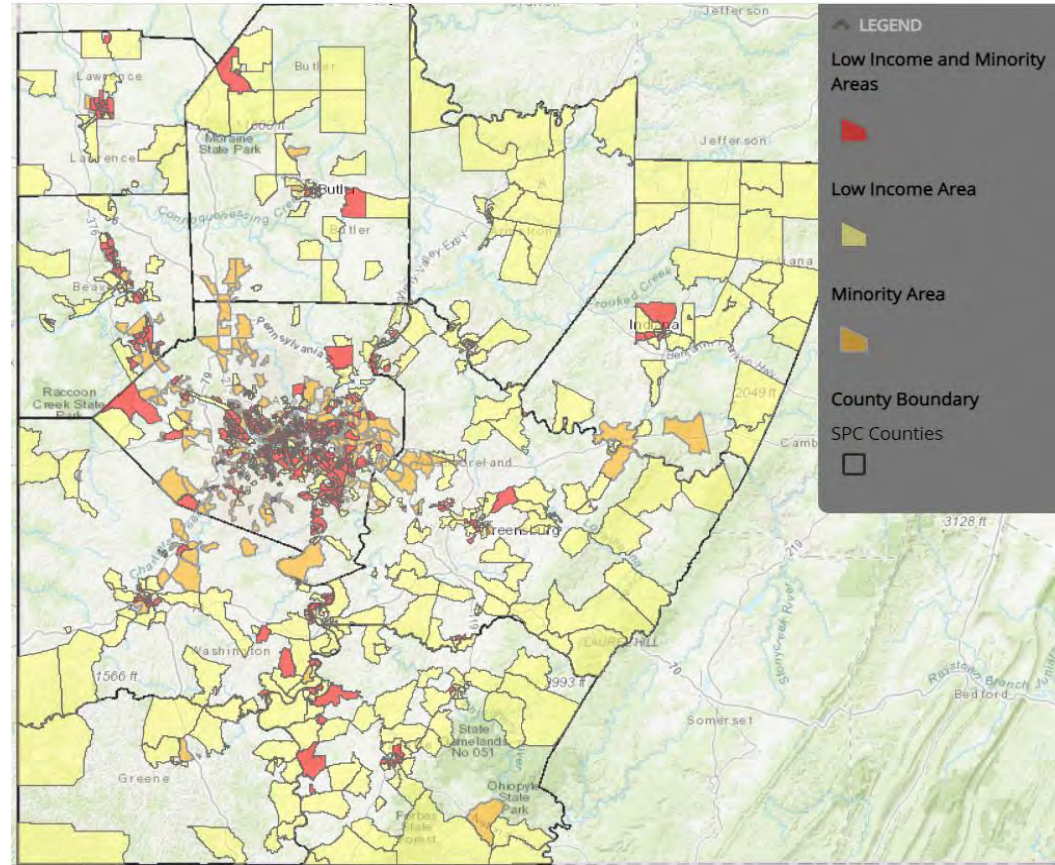
Other Required LRTP Elements

- Population and Employment Forecast
- Transportation Performance Management
- Air Quality Conformity
- Environmental Justice Analysis
- Environmental Inventory and Analysis
- Agency Consultations

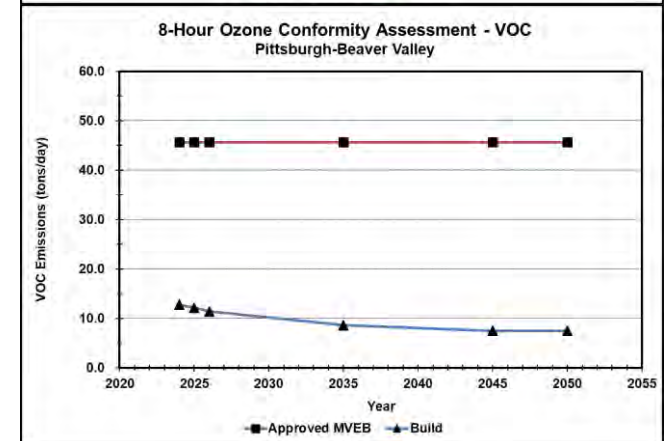
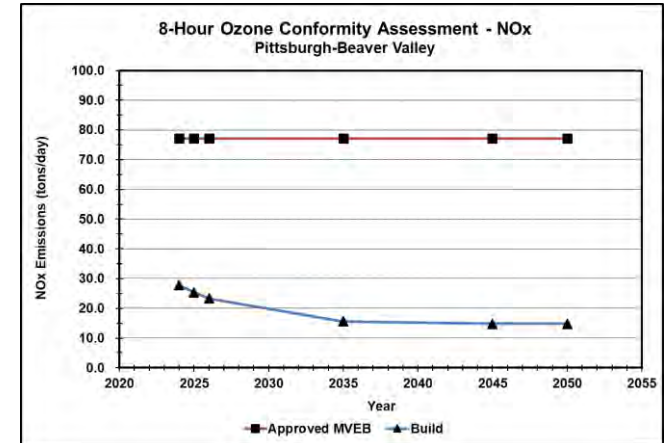
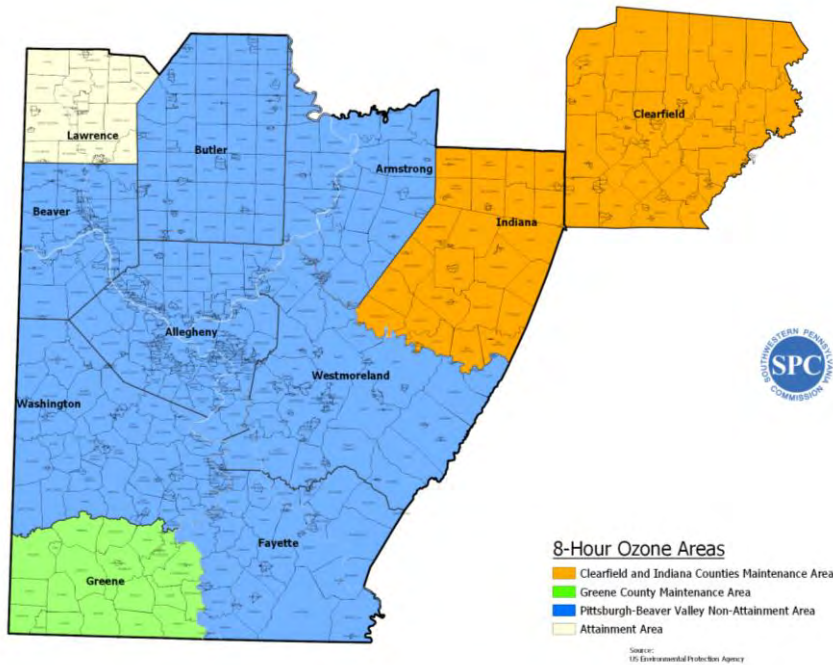


Other LRTP Elements – Environmental Justice

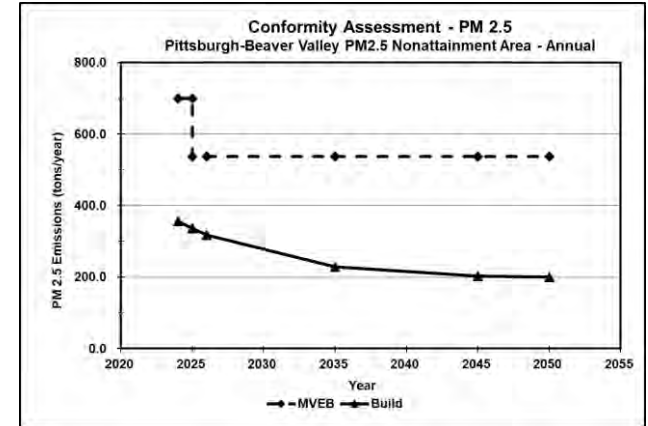
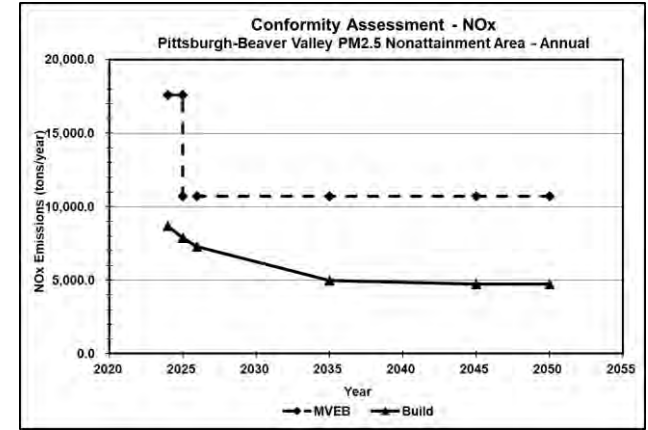
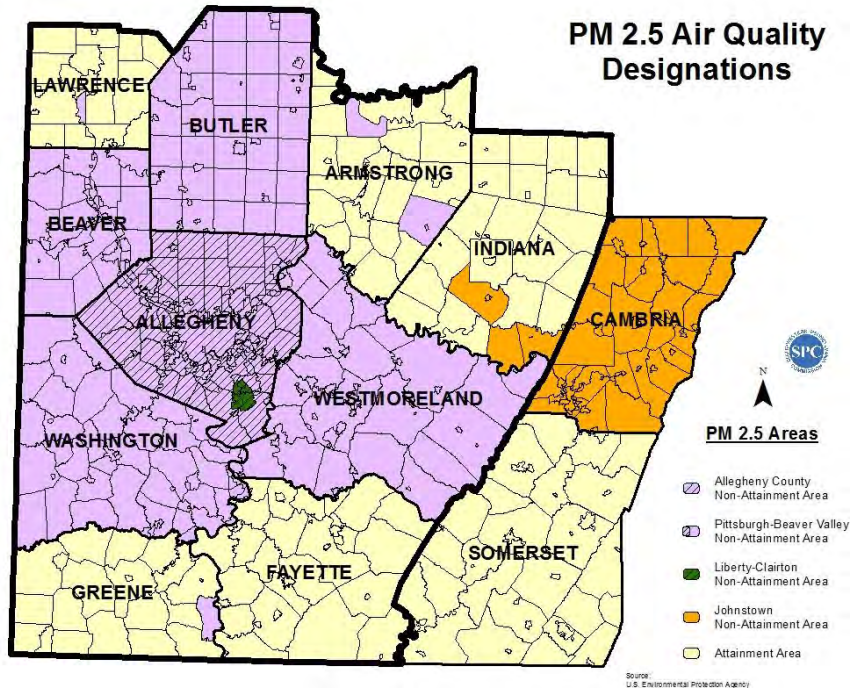
- Identify disproportionately high and adverse human health or environmental effects of the respective agency's programs, policies and activities on low-income populations and minority populations.
- Ensures social equity in programming transportation investments, including full and fair participation by all potentially affected communities in the transportation decision making process



Other LRTP Elements -Air Quality Conformity



Other LRTP Elements -Air Quality Conformity



Engaging with the Public

Direct/Grassroots Outreach

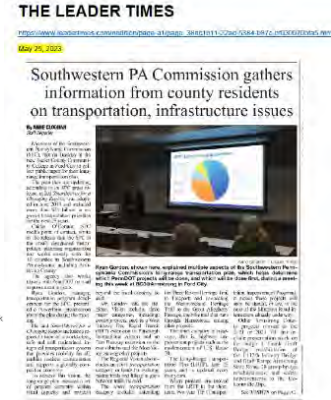
- Worked directly with many of you to coordinate the locations, type of meeting, and other logistical details.
- Public Participation Panels.
- Proactively asked organizations to post/display our public meeting notices, informational materials, and other materials.
 - Libraries, cultural organizations, community-service providers
- 11 Public Meetings (one meeting for each county, and one for the city).
 - 7 in-person
 - 4 virtual



Engaging with the Public

Used a Variety of Communication Channels to Generate Awareness

- Paid media
 - Placed legal ads in 12 publications (print & online)
- Earned media
 - Secured 18 total news stories
 - 2 TV
 - 13 online/newspapers
 - 3 radio



The Daily Courier

SPC meeting

About three dozen people attended the Southwestern Pennsylvania Commission meeting in the former Gallatin Bank Building.

Ryan Gordon, SPC transportation program development manager, said the Long Range Transportation Plan is nearing the end of an 11-step process.

County officials are expected to approve the plan by June 26.

Gordon said projects will include bridges, roadways, safety networks, roundabouts and efficiency.

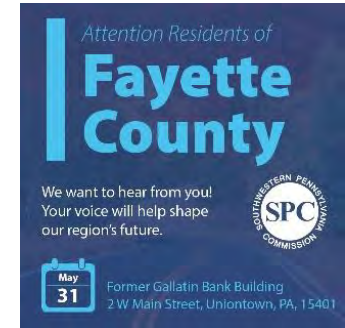
Engaging with the Public

Shared Media (social)

- Curated and distributed an individualized social media toolkit.
- Did individual posts promoting the meetings on all our channels (tagging & engaging with all of you)
- Facebook, LinkedIn, Twitter, and Instagram

Owned Media

- Promote the meetings/public comment period through content that we own and curate (website and newsletter)
 - 731 website views on LRTP page, 324 views on our event section, and a total of 522 views individual public meeting events (result of having individual links to specific meetings)
 - 4,206 newsletter subscribers



Engaging with the Public

Overview of the Results

- 239 participants
- Over 100+ public comments were received
 - Written comments (5)
 - Emailed comments (36)
 - Online surveys (31)
 - Evaluation forms (21)



Globally Competitive Economy - Workforce

Strategy Implementation Progress

Strategies:

- Building a diverse local workforce to meet the demand for highly skilled talent across sectors is critical. Growing the size of the candidate market and ensuring it has the soft skills needed to meet the 21st century expectations of a modern workforce

Progress:

- Build Back Better awarded 60M+ to region and SPC Project Lead for Workforce grant. Regional university and colleges implementing work readiness and technology training into curriculum.
- Working with WIBs and Partners to increase opportunities for underserved populations and remove barriers to education and employment. Promotion of career pathways and on-the-job training opportunities.

Globally Competitive Economy- Infrastructure

Strategy Implementation Progress

Strategies:

- Keeping our aging public infrastructure in a state of good repair is necessary to support growth in the region, but it is just as important that we build the infrastructure of the future.
- Prioritizing infrastructure that provides for economic success, including embracing innovation and technology to improve its efficiency, and supporting projects that maximize the local use of the locally derived energy industry.

Progress:

- Working with regional partners on energy diversification projects such as solar, Carbon Capture, NGL and Hydrogen Hub. Team PA submitted regional Hydrogen HUB application for southwestern Pennsylvania
- Community Colleges training the regional workforce to support needs of advanced manufacturing and energy sectors.

Globally Competitive Economy - Technology

Strategy Implementation Progress

Strategies:

- Fast paced technology identification, deployment, and adoption across all sectors will give the region a competitive advantage. Ensuring that the entire region is provided equal access to high speed internet connectivity is essential to prevent residents and communities from being left behind.

Activities:

- Connectivity Improvement Plan created to provide affordable, reliable broadband internet access across the region.
- Local governments applied for and are applying for regional resources through the Middle Mile Grant
- Regional Broadband Summit hosted Feb 2023
- Small Business Connectivity Survey being conducted
- Workforce training through for lineman to speed up deployment of broadband

Sustainable & Resilient Communities

Strategy Implementation Progress

Strategies:

- Educate and engage municipalities on best practices.
- Promote strategic infrastructure investment in communities that reduces risks, including chronic stresses and potential acute shocks from flooding and landslides, extreme weather, economic downturn and infrastructure failure.
- Invest in strategies that decelerate, adapt to, and are resilient against the impacts of climate change.
- Promote and support sustainable regional water resource management and planning for water systems.

Progress:

- Held workshops for local governments on local project delivery and local bridge funding mechanisms
- Dedicated funding in TIP/LRP for landslide remediation
- Assisted Counties in allocating over \$17M in COVID-19 Hospitality Industry Recovery Program (CHIRP) funding
- Expanded SPC Water Resource Center programming and assistance
- Hired a dedicated environmental programs manager to expand SPC environmental programs - including sustainability and resiliency

Sustainable & Resilient Communities

Strategy Implementation Progress

Strategies:

- Invest in strategies that decelerate, adapt to, and are resilient against the impacts of climate change. This includes investment in disaster preparedness, response, and recovery, as well as, raising awareness about and combating climate change, its impacts, and regional strategies.
- Support and encourage low carbon transportation projects or programs that will also contribute to attainment or maintenance of the national ambient air quality standards (NAAQS).

Activities:

- Leading the region's planning for the EPA Climate Pollution Reduction Grant (CPRG) program with a broad coalition of partners and stakeholders
- Created online toolkit for the Charging and Fueling Infrastructure (CFI) discretionary funding program
- Continue to program federal CMAQ eligible projects that provide the greatest benefit to regional air quality
- Will begin to allocate federal Carbon Reduction Program funding to regional projects (summer 2023)

Questions?



Action Item: 5-23, Adopt the Air Quality Conformity Determination

Chuck Imbrogno, Manager of Models & Data Analysis

Agenda Item: 7



Action Item: 6-23, Adopt the Long-Range Transportation Plan (LRTP)

Dom D'Andrea, Director of Transportation Planning

Agenda Item: 8



Action Item: 7-23, Adopt the Safe Street for All (SS4A) Grant Program

Josh Spano, Manager, Transportation Operations & Safety

Agenda Item: 9



Safe Streets and Road for All (SS4A) Grant Program:

\$1Billion in funding for FY 23/24

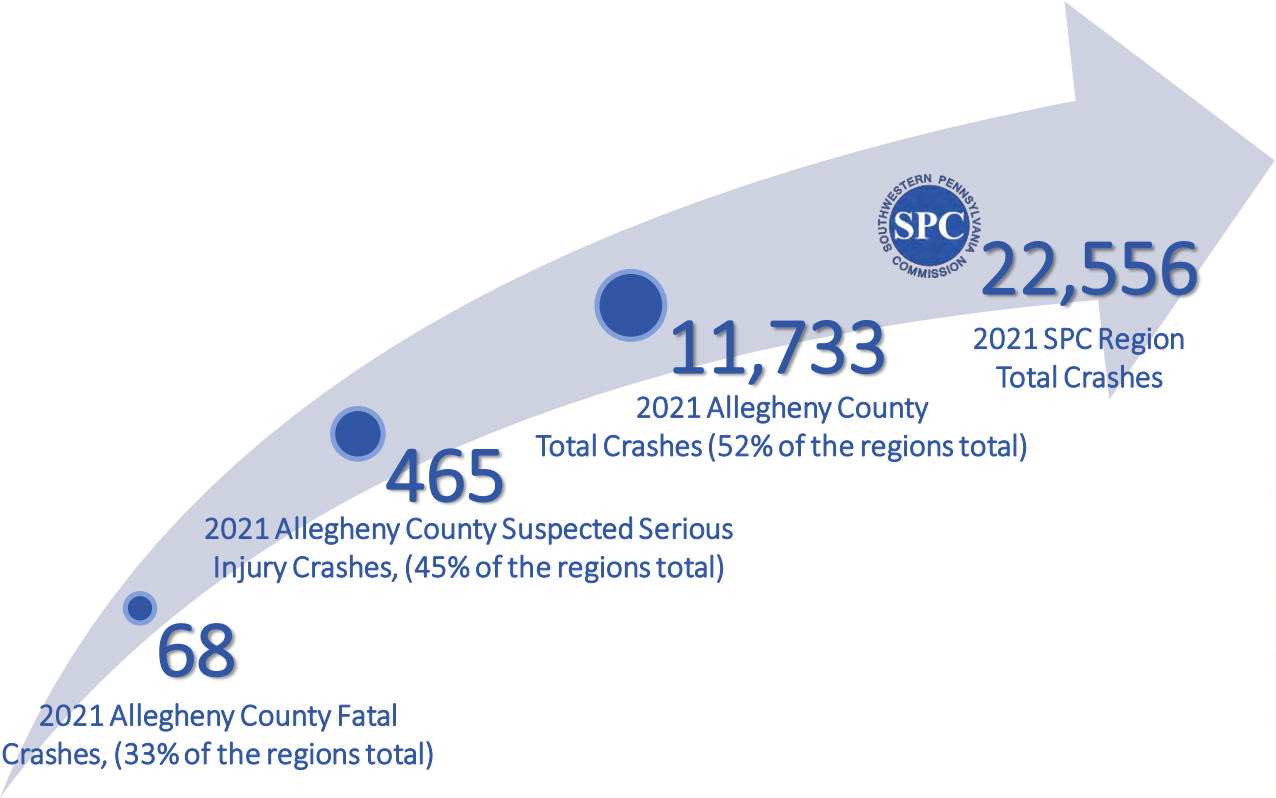
20% Match Required

ELIGIBILITY: MPOs, counties, Cities, Towns, State Transit Agencies, Tribal Governments

PURPOSE: To improve roadway safety by significantly reducing or eliminating roadway fatalities and/or serious injuries



Pilot Comprehensive Safety Action Plan for Allegheny County:



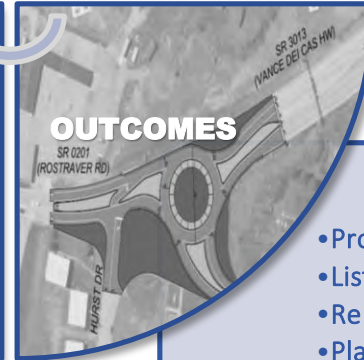
Pilot Comprehensive Safety Action Plan for Allegheny County:

Vision Zero Plan

- All modes of travel
- Municipal, County, State
- Existing Conditions
- Historical Trends
- Crash Data



- Population Characteristics
- Equity Impact Assessments
- EJ & Justice 40



- Stakeholders
- Private Sector
- Elected Officials
- Community Groups

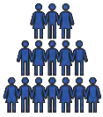
- Projects/Strategies
- List of Top Locations
- Renderings
- Planning Level Costs
- Data

Pilot Comprehensive Safety Action Plan for Allegheny County:

The plan will be a catalyst for:



More effective roadway safety spending and capitalizing on future safety funds



Prioritizing safety investments in underserved communities



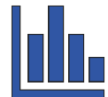
Pivoting to a safe systems approach



Improving safety and mobility for vulnerable road users



Increasing and improving walking, biking, transit trips



Using a data-driven approach to prioritize locations



Learning the communities concerns when data doesn't tell the full story

Questions?

Joshua Spano

Manager, Transportation Operations and Safety Programs

jspano@spcregion.org



Lillian Gabreski

Manager, Sponsored Programs Development

lgabreski@spcregion.org



Action Item: 8-23, Adopt a Meeting Schedule for FY 23-24

Vince Valdes, Executive Director, President & CEO

Agenda Item: 10



Message

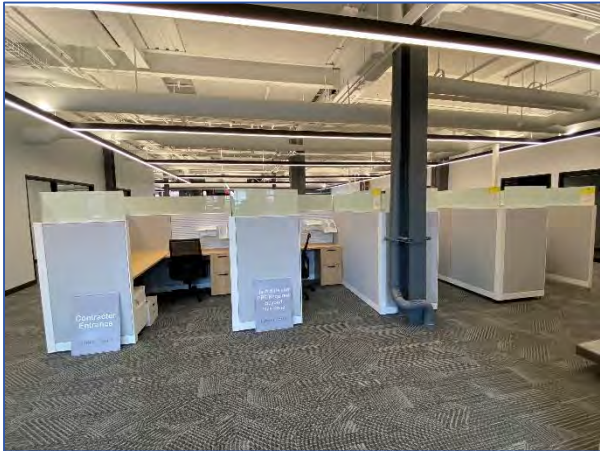
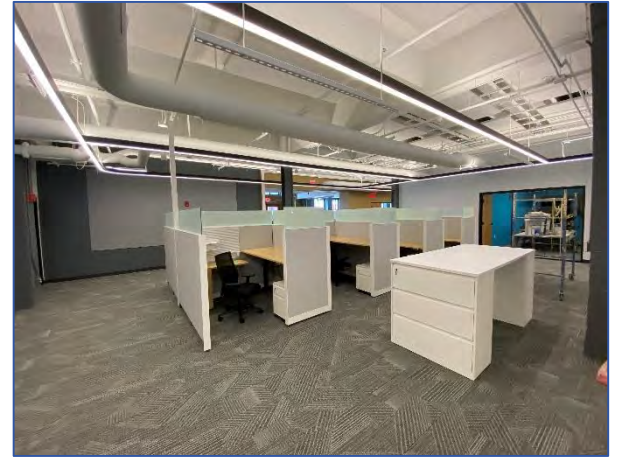
Vince Valdes, Executive Director, President & CEO

Agenda Item: 11



The Terminal





Next Meeting Date: August 28, 2023

Agenda Item: 11



Other SPC Business

Agenda Item: 12



Questions?



Adjourn

Agenda Item: 13

